

# AVAILABLE FOR LEASE

Professional Office Space



114 E. SHAW AVE. | FRESNO, CALIFORNIA



## LEASE INFORMATION

### Available Space:

Suite 102 | 2,167± SF\*

Suite 103 | 1,500± SF\*

\*May be combined for 3,667± SF

### Lease Rate:

\$1.00 per SF,  
tenant to pay janitorial expense.

### Lease Term:

3 year minimum

### Parking:

Ample



**For Additional Information  
Please Contact:**

### Scott Christensen

Vice President | Office Division  
559.447.6230  
schristensen@pearsonrealty.com  
CA DRE# 01415793

### Jim Graham

Vice President | Office Division  
559.447.6260  
jgraham@pearsonrealty.com  
CA DRE# 01300389

## THE PEARSON COMPANIES

FRESNO OFFICE | 7480 N Palm Ave Suite 101 Fresno CA 93711 | 559.432.6200  
VISALIA OFFICE | 3447 S Demaree St Visalia CA 93277 | 559.732.7300

## FROM INSIGHT TO RESULTS

We believe the information contained herein to be correct. It is obtained from sources which we regard as reliable, but we assume no liability for errors or omissions.

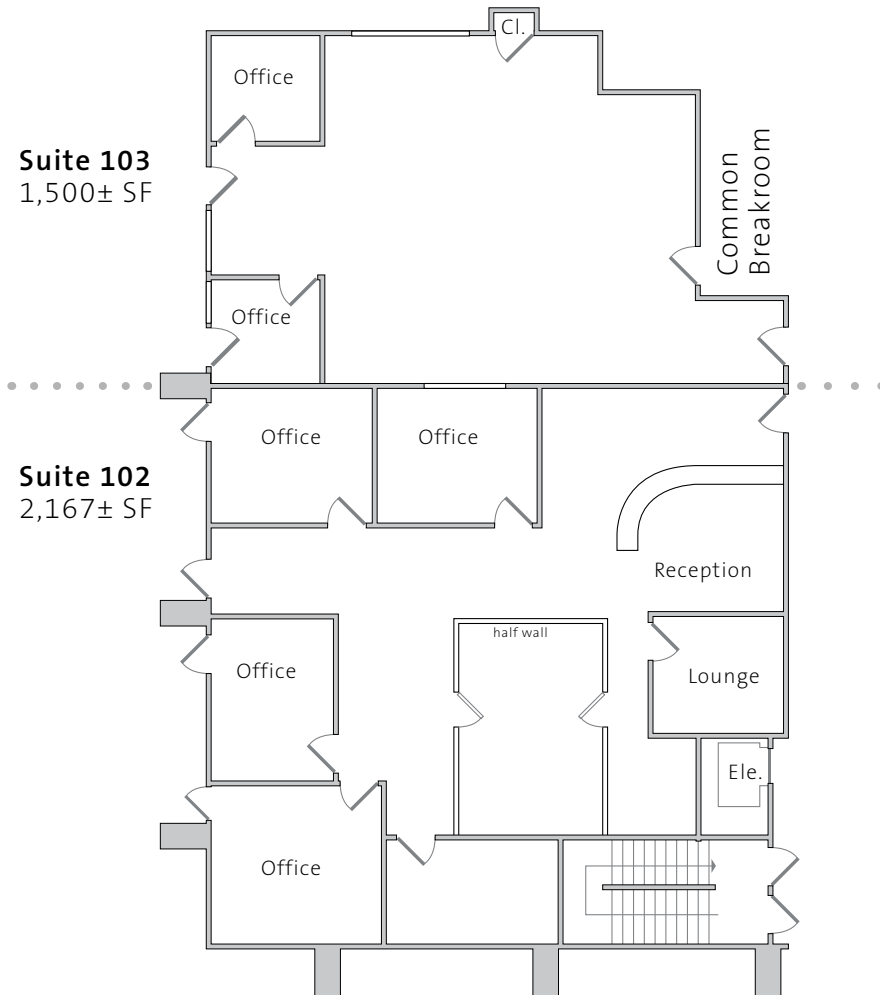
*Independently owned and operated*

# AVAILABLE FOR LEASE

Professional Office Space

114 E. SHAW AVE. | FRESNO, CALIFORNIA

## FLOOR PLANS



## AERIAL MAP



## LOCATION DESCRIPTION

The property is located just off of Shaw Avenue between Freeway 41 and Blackstone Avenue. The location provides great access to Freeway 41 along with many amenities such as banks, restaurants and other services.

**NOTE:** Suites may be combined for a total of 3,667± SF.

FRESNO OFFICE | 7480 N Palm Ave Suite 101 Fresno CA 93711 | 559.432.6200  
VISALIA OFFICE | 3447 S Demaree St Visalia CA 93277 | 559.732.7300  
*Independently owned and operated*



**GRUBB & ELLIS**  
Pearson Commercial

We believe the information contained herein to be correct. It is obtained from sources which we regard as reliable, but we assume no liability for errors or omissions.