

Property Features

- Utilities on site
- Substantial road frontage
- Raw land
- Zoning A1AG
- Priced well below assessed value
- Property possesses valid title insurance
- 90% of taxes are paid by existing cell tower
- Parcel ID 22 18B

Specifications

Total Size	5 Acres
Timing	Available immediately
Sale Price	\$135,000

Demographics

	1 Mile	3 Miles	5 Miles
Population	237	12,937	53,573
No. of Households	80	4,162	16,810
Avg. HH Income	\$105,555	\$102,527	\$90,446

For more information, contact:

VIRGIL NELSON, CCIM
 Senior Vice President
 540 322 4150
virgil.nelson@thalhimer.com

Eagle Village
 1125 Jefferson Davis Highway, Suite 350
 Fredericksburg, VA 22401-8449
www.thalhimer.com



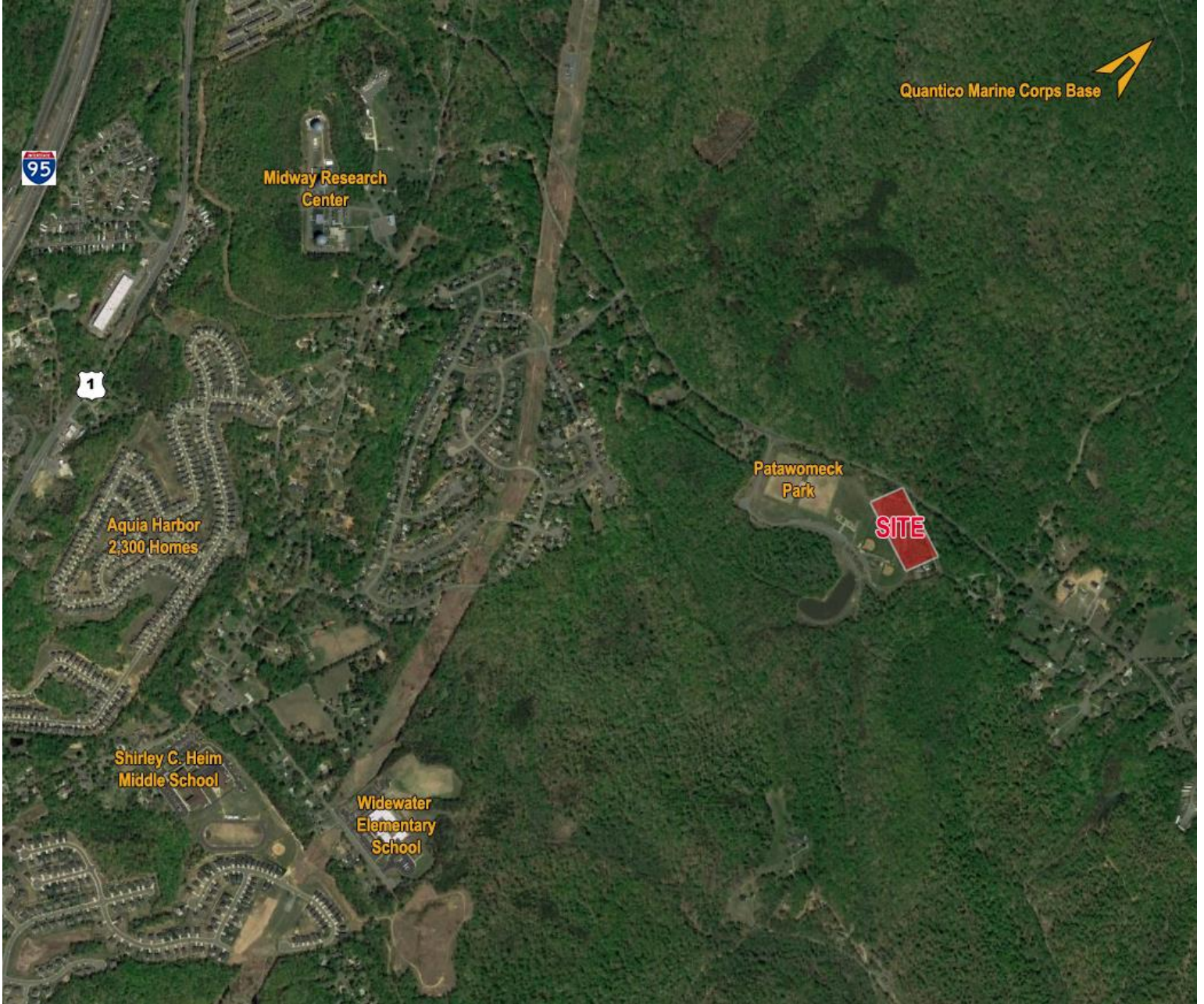
For more information, contact:

VIRGIL NELSON, CCIM
Senior Vice President
540 322 4150
virgil.nelson@thalhimer.com

Eagle Village
1125 Jefferson Davis Highway, Suite 350
Fredericksburg, VA 22401-8449
www.thalhimer.com

Independently Owned and Operated / A Member of the Cushman & Wakefield Alliance

Cushman & Wakefield | Thalhimer © 2015. No warranty or representation, express or implied, is made to the accuracy or completeness of the information contained herein, and same is submitted subject to errors, omissions, change of price, rental or other conditions, withdrawal without notice, and to any special listing conditions imposed by the property owner(s). As applicable, we make no representation as to the condition of the property (or properties) in question.



For more information, contact:

VIRGIL NELSON, CCIM
Senior Vice President
540 322 4150
virgil.nelson@thalhimer.com

Eagle Village
1125 Jefferson Davis Highway, Suite 350
Fredericksburg, VA 22401-8449
www.thalhimer.com