

For Lease  
**2,183 SF**  
Updated Office Suite in  
Historic LoDo Building



# Chamber Building

1445 Market Street, Suite 280 | Denver, Colorado 80202

## Property Overview

- Well-located 2,183 SF office suite available for lease in recently renovated historic LoDo building
- Floor to ceiling windows provide natural light throughout
- Tastefully appointed modern finishes, newly upgraded kitchen, and large all-glass conference room
- Prime location surrounded by fine-dining, upscale hotels, shopping, entertainment venues, and more
- On-site ownership and property management
- Easy access to I-25, Speer Blvd, and Auraria Pkwy

**Lease Rate: \$38.00-\$40.00/SF FSG**

## Property Facts

Available SF:	2,183 SF
Building SF:	74,623 SF
Year Built / Renov.:	1985 / 2015

For more information:

**Kiley Crews**

720 881 7542  
kcrews@shamesmakovsky.com

**Ana Sandomire**

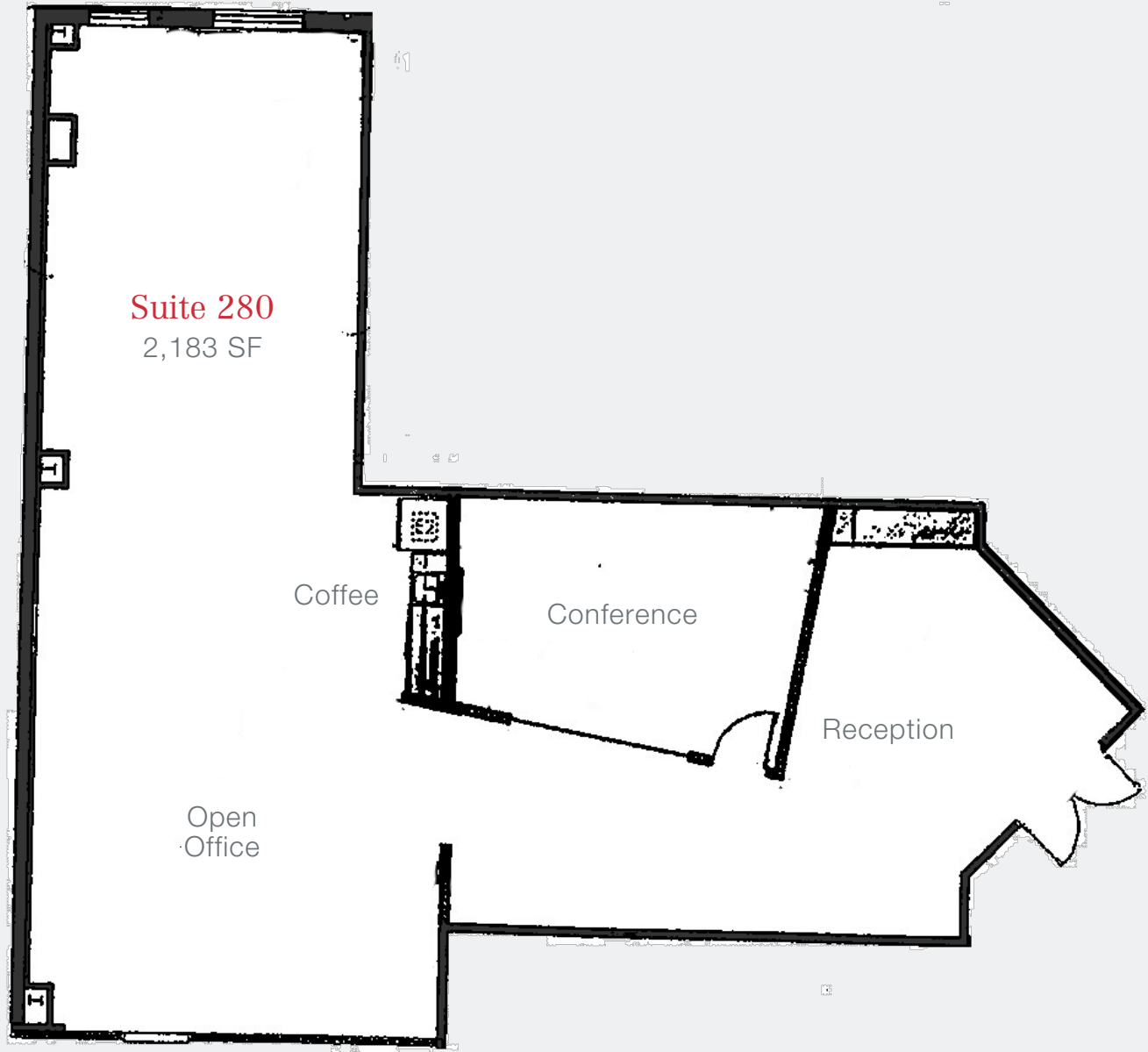
303 565 3029  
asandomire@shamesmakovsky.com

NO WARRANTY OR REPRESENTATION, EXPRESS OR IMPLIED, IS MADE AS TO THE ACCURACY OF THE INFORMATION CONTAINED HEREIN, AND THE SAME IS SUBMITTED SUBJECT TO ERRORS, OMISSIONS, CHANGE OF PRICE, RENTAL OR OTHER CONDITIONS, PRIOR SALE, LEASE OR FINANCING, OR WITHDRAWAL WITHOUT NOTICE, AND OF ANY SPECIAL LISTING CONDITIONS IMPOSED BY OUR PRINCIPALS NO WARRANTIES OR REPRESENTATIONS ARE MADE AS TO THE CONDITION OF THE PROPERTY OR ANY HAZARDS CONTAINED THEREIN ARE ANY TO BE IMPLIED.

1400 Glenarm Place, Suite 100  
Denver, CO 80202  
303 534 5005

**naishamesmakovsky.com**

For Lease  
**2,183 SF**  
1445 Market St #280  
Denver, Colorado

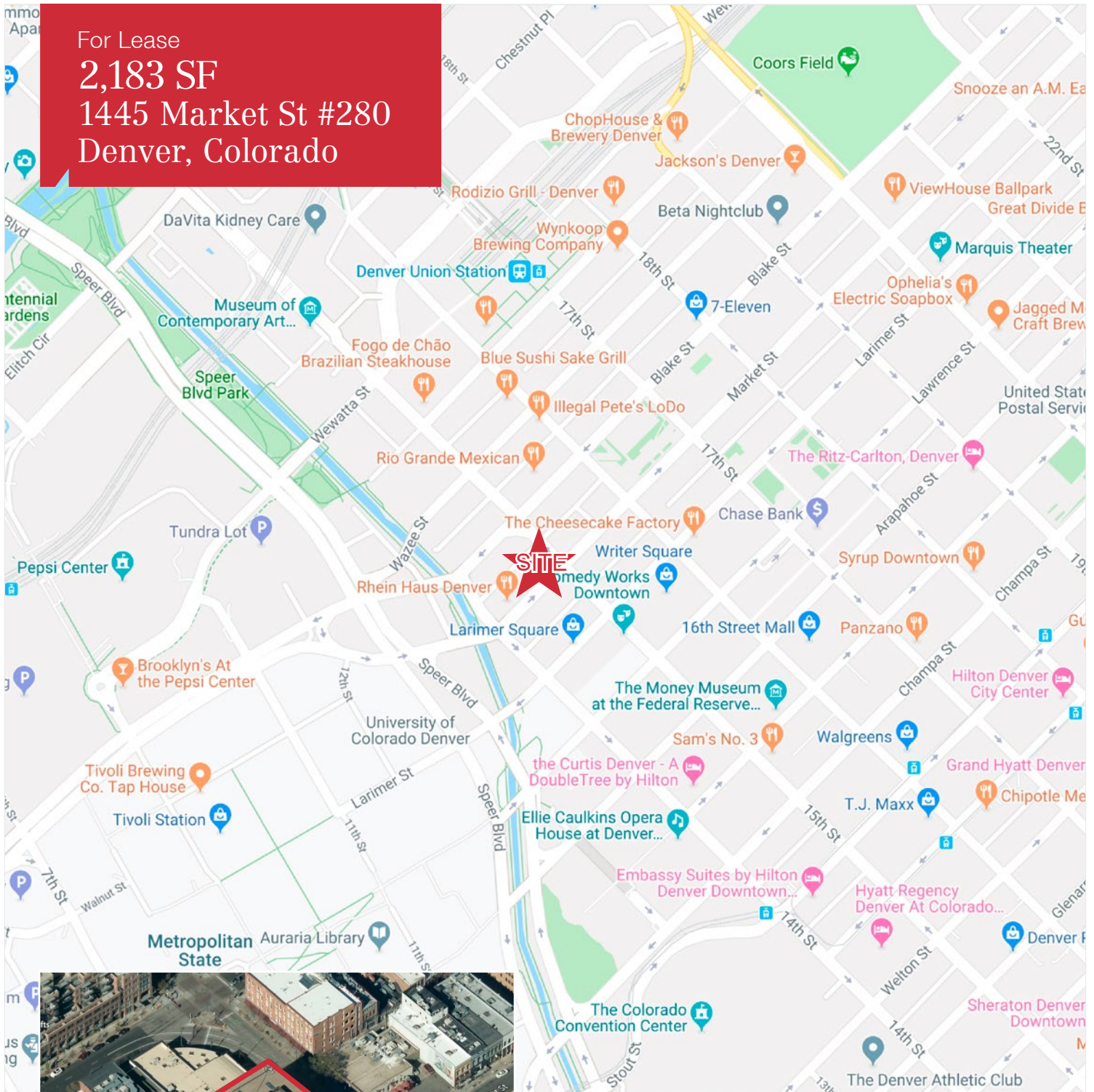




For more information:  
**Ana Sandomire**  
303 565 3031  
asandomire@shamesmakovsky.com

**Kiley Crews**  
720 881 7542  
kcrews@shamesmakovsky.com

For Lease  
**2,183 SF**  
**1445 Market St #280**  
**Denver, Colorado**



For more information:

**Kiley Crews**  
720 881 7542  
kcrews@shamesmakovsky.com

**Ana Sandomire**  
303 565 3029  
asandomire@shamesmakovsky.com

1400 Glenarm Place, Suite 100  
Denver, CO 80202  
303 534 5005

[naishamesmakovsky.com](http://naishamesmakovsky.com)