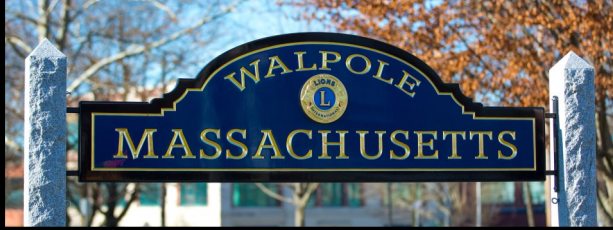


**Walpole Station Business Center**

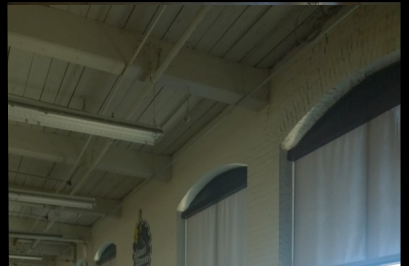
**100 Elm Street  
55-95 West Street**

**Brick & Beam Office & Retail Space Available  
Up to 19,000 SF**



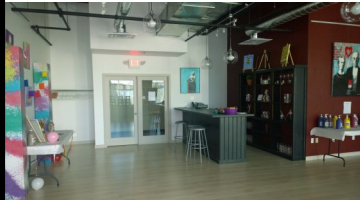
**85—87 West Street**

**1st Floor: 4,000 SF  
3rd Floor: 15,000 SF (subdividable)  
*SF is approximate***



- **Walpole Center Location**
- **Adjacent to Commuter Rail Station**
- **Ample Parking**
- **Steps to Local Area Amenities**

- ◆ **Brick & Beam Mill Space**
- ◆ **Open Ceilings; 15'+ Heights**
- ◆ **Custom Buildouts Possible**



**Please Visit:**

**[www.WalpoleStationBC.com](http://www.WalpoleStationBC.com)**

**LEASING CONTACT: MICHAEL K. MANZO  
617-807-0963 x 702 [MKMANZO@MANZOCOMPANY.COM](mailto:MKMANZO@MANZOCOMPANY.COM)  
[WWW.MANZOCOMPANY.COM](http://WWW.MANZOCOMPANY.COM)**



**OWNED AND MANAGED BY:  
THE MANZO COMPANY, LLC, TAMBONE INVESTMENT GROUP AND OLD HILL PARTNERS**