

Dierbergs Wentzville Crossing



Development

For More Information Contact:

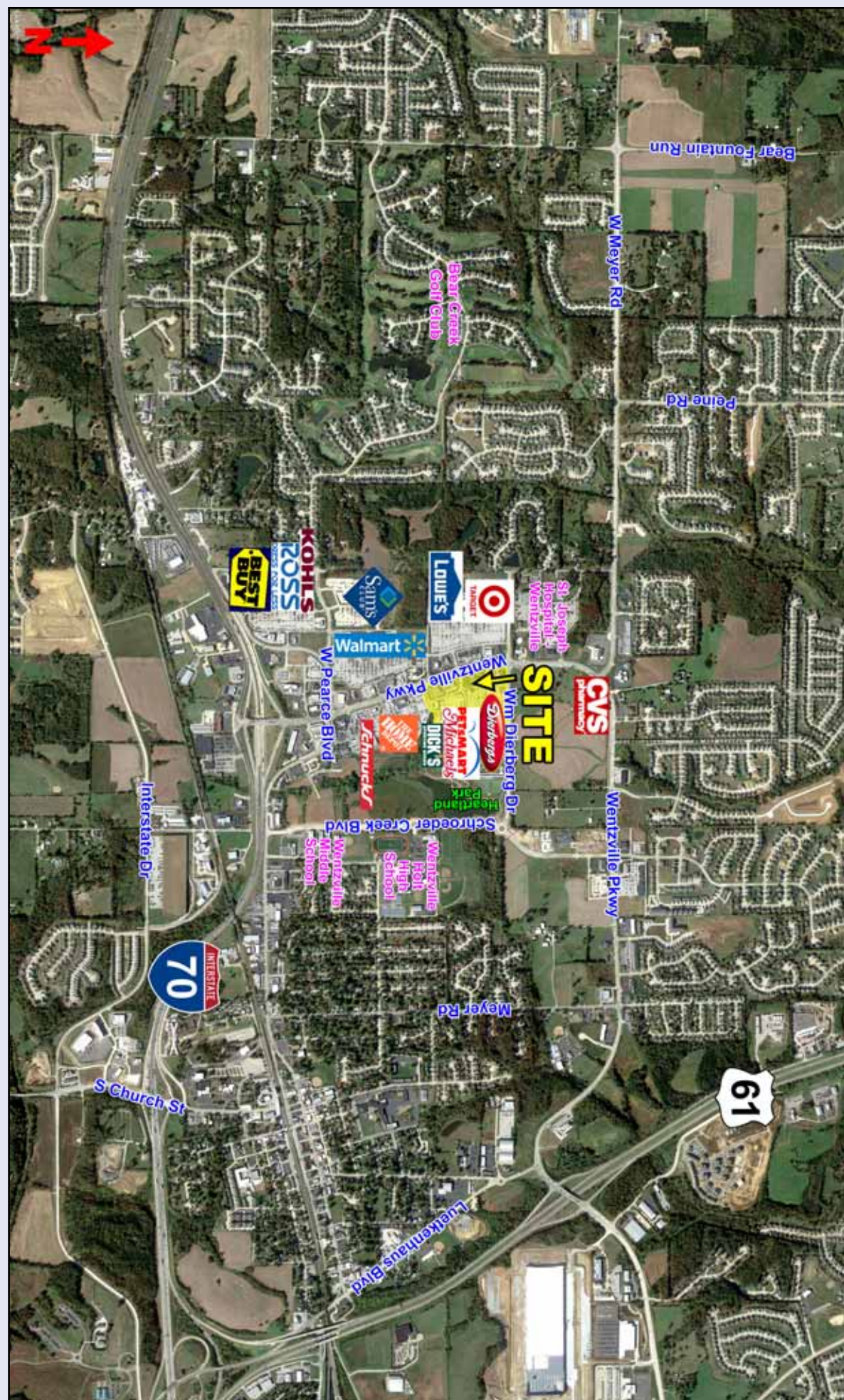


314-991-8900

Weller Meyer (x226)
wmeyer@caplaco.com

11850 Studt Avenue
P.O. Box 419121
St. Louis, Missouri 63141

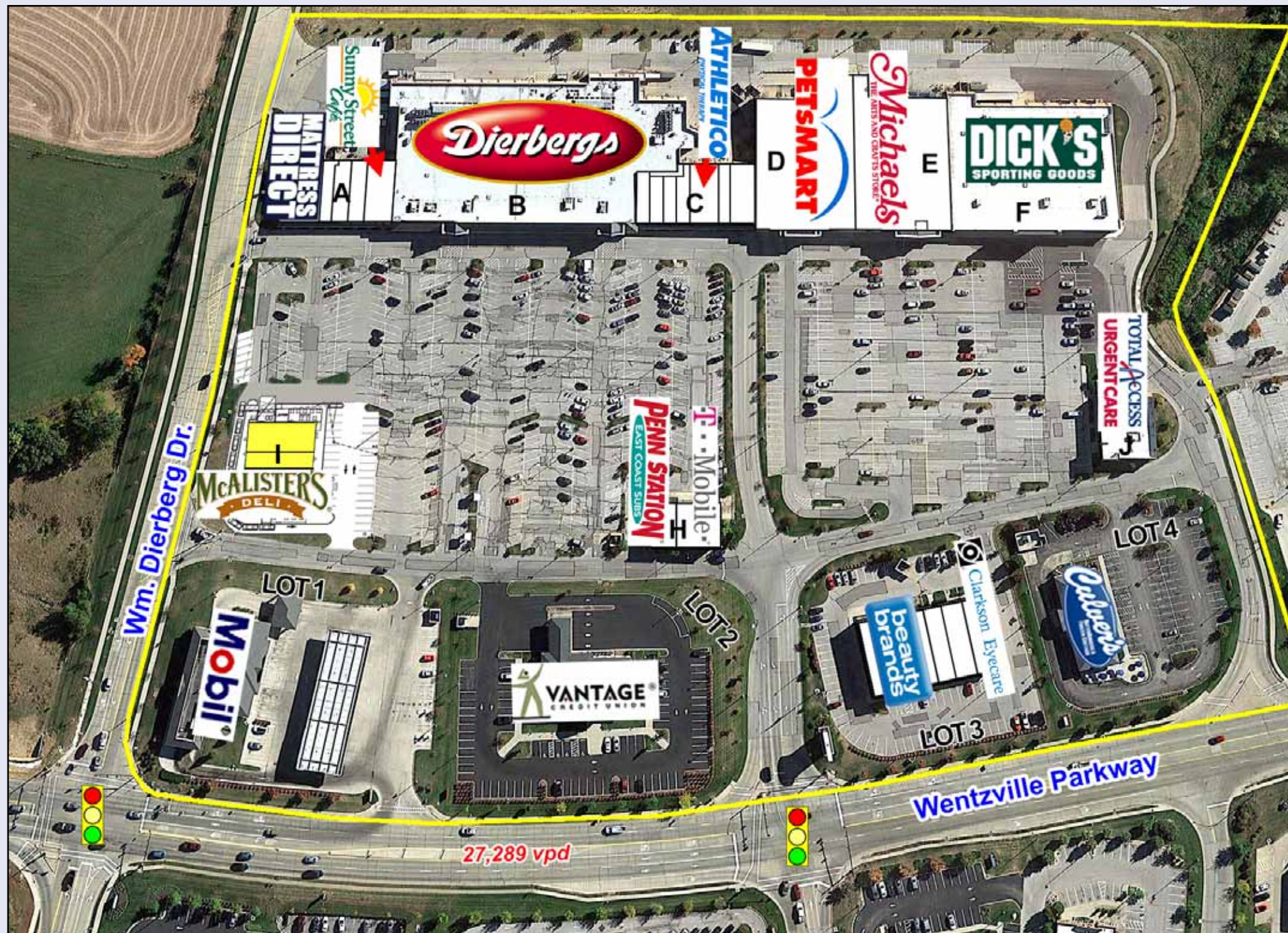
Fax 314-991-2474



11850 Studt Avenue
P.O. Box 419121
St. Louis, Missouri 63141
Telephone: (314)991-8900
Fax: (314)991-2474

The information contained herein was obtained from sources deemed reliable, however, Capitol Realty Group makes no guarantees as to the completeness or accuracy thereof. This information is subject to error, omission, change in price or conditions, prior sale or lease, or withdrawal without notice.

	1-Mile	3-Mile	5-Mile
Demographics			
2017 Population	5,433	34,260	52,811
2017 Households	1,459	9,355	14,680
2017 Avg. Household Income	\$85,481	\$94,547	\$97,244



<u>Bldg.</u>	<u>Tenant</u>	<u>Sq. Ft.</u>
A	Mattress Direct	4,000
	Fantastic Sams	1,227
	Investors Title	1,538
	Victorian Nails	1,600
	Sunny Street Cafe'	2,838
	Dierbergs	66,756
B	Apple Cleaners	1,076
	Edward Jones	1,160
	CPR	956
	Southwest Hearing	1,282
	Pro Rehab	2,885
	Marshall Wireless	1,200
C	Dr. Kraner, DDS	2,341
	Petsmart	22,743
D	Michaels	21,683
	Dick's Sporting Goods	35,116
E	Penn Station	1,524
	T-Mobile	2,498
F	Available	2,900
	Available	1,600
H	McAlister's Deli	4,000
	Total Access Urgent Care	4,997

<u>Outlot</u>	<u>Tenant</u>	<u>Size</u>
Lot 1	Mobil	2.01 ac
Lot 2	Vantage Credit Union	1.98 ac
Lot 3	Beauty Brands	5,982 sf
	Supplement Superstore	1,597 sf
	Club Pilates	2,015 sf
	Clarkson Eyecare	2,402 sf
Lot 4	Culver's	1.33 ac

Updated 09/19/18

