

FOR  
LEASE

960  
HOWARD  
STREET  
SAN FRANCISCO

## Lease Opportunity!

Full Building Flex Space  
Located in West Yerba Buena



# 960 HOWARD STREET SAN FRANCISCO

**Barry Bram, CCIM** | DRE# 00639738  
Ofc: 415.268.2231 | Cell: 415.516.3313  
bbram@tricommercial.com



## OFFERING SUMMARY

Building Size:	10,249 SF
Year Built:	1920
Renovated:	2017
Ceiling Height:	16'
Drive-In:	12'7" w x 11' h
Zoning:	MUR
Parcel:	3725-019
Lease Rate:	Price TBD
	Avail. August 1, 2019

## PROPERTY HIGHLIGHTS

- Sandblasted bow truss ceiling
- Skylights
- ADA restrooms
- Reinforced concrete

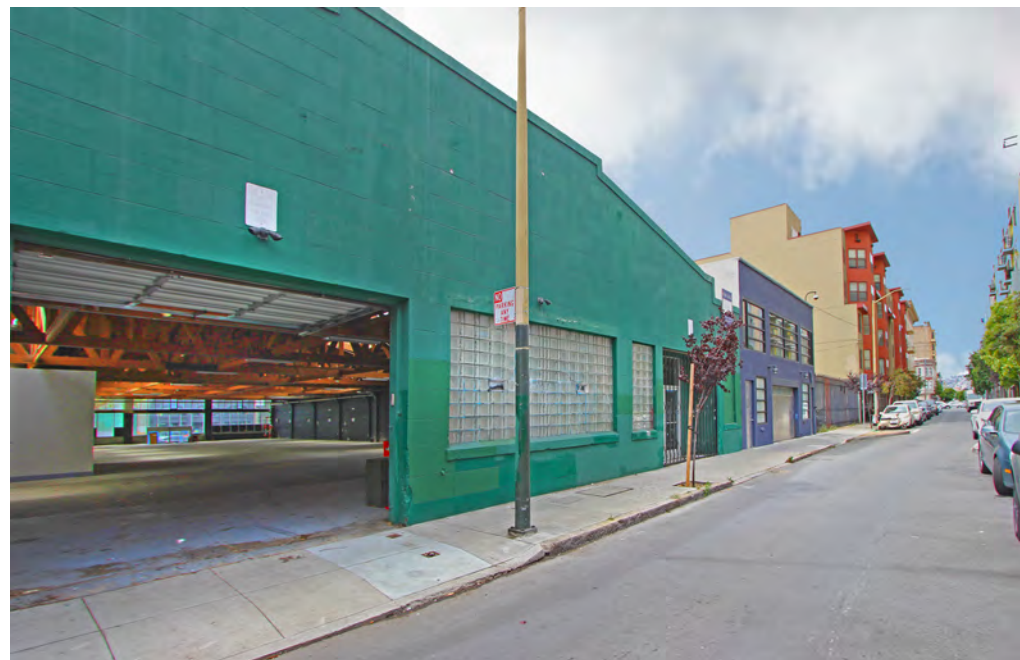
**TRI Commercial Real Estate Services, Inc.**  
71 Stevenson Street, Suite 1450, San Francisco, CA 94105

[www.tricommercial.com](http://www.tricommercial.com)

*The information in this document was obtained from sources we deem reliable; however, no warranty or representation, expressed or implied, is made as to the accuracy of the information contained herein.*

# PHOTOS

960  
HOWARD  
STREET  
SAN FRANCISCO



*The information in this document was obtained from sources we deem reliable; however, no warranty or representation, expressed or implied, is made as to the accuracy of the information contained herein.*

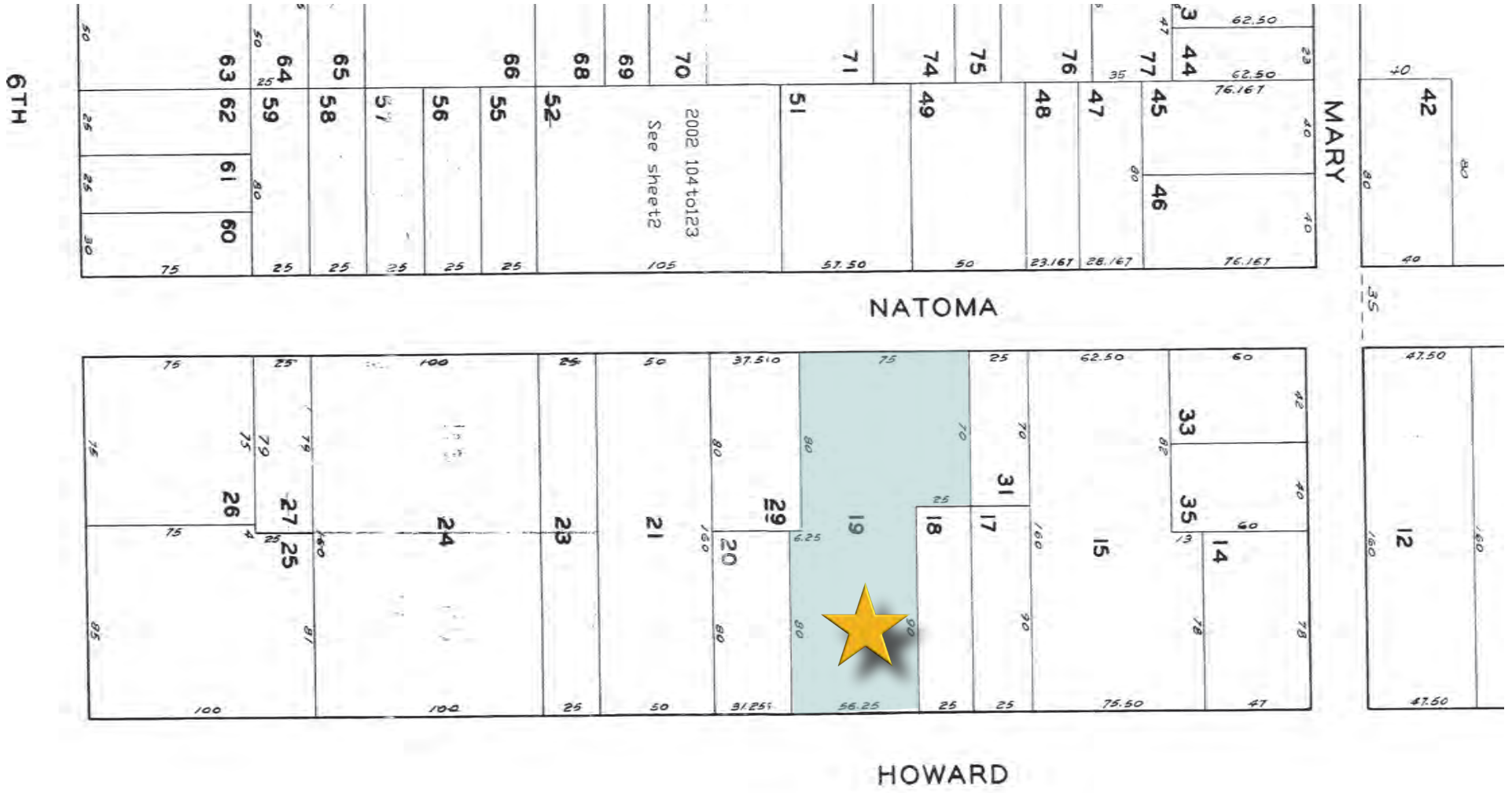
PHOTO

960  
HOWARD  
STREET  
SAN FRANCISCO



*The information in this document was obtained from sources we deem reliable; however, no warranty or representation, expressed or implied, is made as to the accuracy of the information contained herein.*

# PARCEL MAP



# NEIGHBORHOOD MAP

960 Howard Street, San Francisco, CA



Map data © 2019 Google Imagery © 2019 Data CSUMP SF

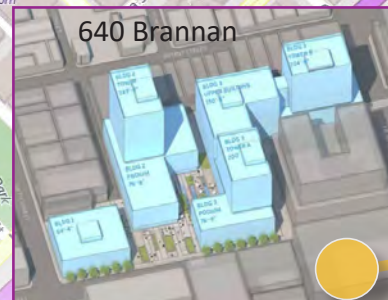
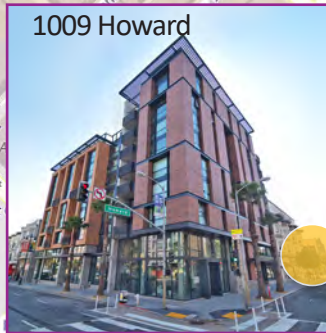
# NEARBY DEVELOPMENT

960 Howard Street, San Francisco, CA

**5M development plan**

Details of the latest proposal for a mixed-use development at Fifth and Mission streets:

- Planned 103-unit complex
- San Francisco Chronicle: 213,000 square feet (stays in current location)
- Rooftop open space: 23,000 square feet
- 400 market-rate units
- Office space: 614,000 square feet
- Open space: 11,500 square feet
- Active ground floor: 50,000 square feet
- 87 affordable units
- 201 market-rate units
- Open space: 14,500 square feet
- Senior housing: 83 affordable units



**5M**



**960 HOWARD STREET SAN FRANCISCO**