



600 W. 28TH STREET

600 WEST 28TH STREET, AUSTIN, TX 78705



FOR LEASING INFORMATION, CONTACT

GRAHAM TRULL **CHERYL SMITH**

(512) 279.9209

(512) 736.4778

graham.trull@kuceraco.com

cheryl.smith@kuceraco.com

1,200 RSF
SUITE 101

OFFICE SPACE FOR LEASE

\$2,500/Mo.
FULL SERVICE

7200 N. MOPAC EXPRESSWAY | AUSTIN, TX 78731 | (512) 346-0025 | See all of our listings at WWW.KUCERACO.COM.

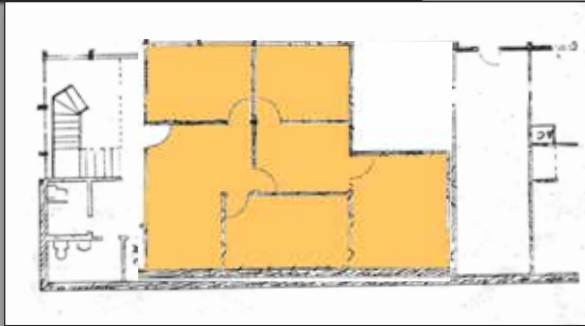
All information contained herein, while based on information deemed reliable, has been gathered from various third-party sources, is not in any way warranted by The Kucera Companies, may not be entirely complete or accurate, and is subject to corrections, errors and/or omissions. This listing is subject to prior sale, lease, change in price and/or removal from the market without notice. The user of any information contained herein should conduct his/her own independent research including, without limitation, obtaining its own counsel and the advice of a real estate professional.

600 W. 28TH STREET

600 WEST 28TH STREET, AUSTIN, TX 78705



SUITE LOCATION



PROPERTY FEATURES



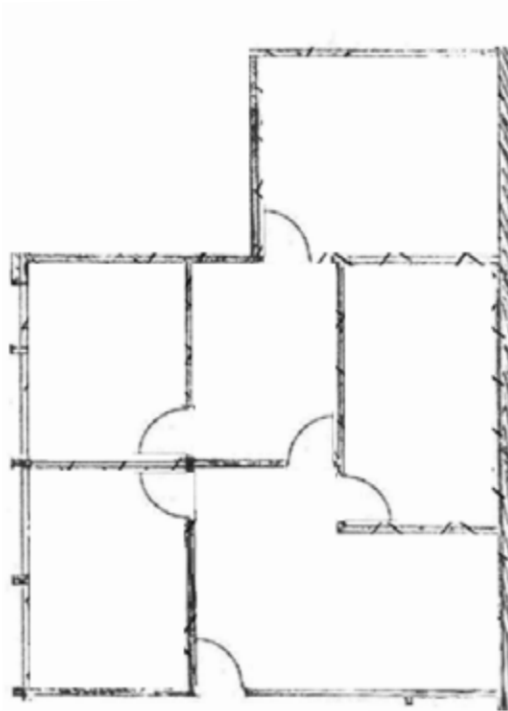
Located Right off the First Floor Lobby



IDEAL LOCATION Central Location with Close Proximity to UT Campus, Downtown & The Drag



Flexible Lease Term



Available September 1st, 2017



FOR LEASING INFORMATION, CONTACT

GRAHAM TRULL **CHERYL SMITH**

(512) 279.9209

(512) 736.4778

graham.trull@kuceraco.com

cheryl.smith@kuceraco.com

OFFICE SPACE FOR LEASE

1,200 RSF

SUITE 101

\$2,500/Mo.

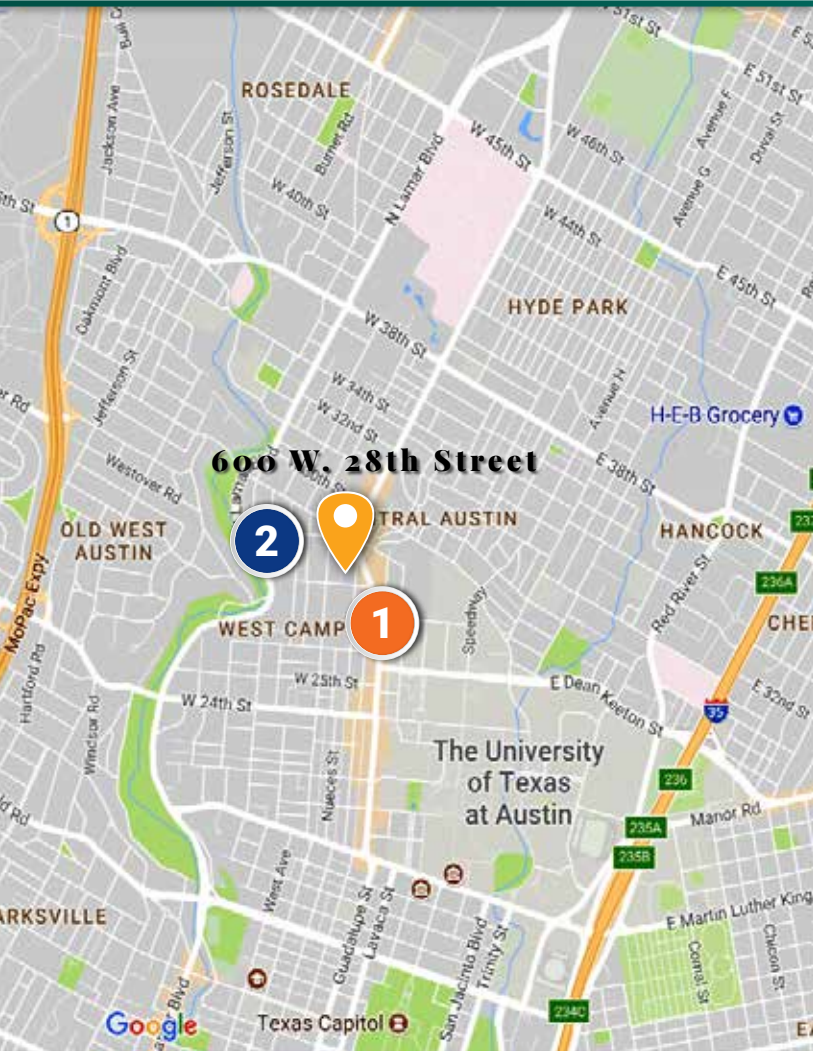
FULL SERVICE

7200 N. MOPAC EXPRESSWAY | AUSTIN, TX 78731 | (512) 346-0025 | See all of our listings at WWW.KUCERACO.COM.

All information contained herein, while based on information deemed reliable, has been gathered from various third-party sources, is not in any way warranted by The Kucera Companies, may not be entirely complete or accurate, and is subject to corrections, errors and/or omissions. This listing is subject to prior sale, lease, change in price and/or removal from the market without notice. The user of any information contained herein should conduct his/her own independent research including, without limitation, obtaining its own counsel and the advice of a real estate professional.

600 W. 28TH STREET

600 WEST 28TH STREET, AUSTIN, TX 78705



Nearby Amenities

1 Guadalupe Street

- Hala Bros.
- Kerbey Lane Cafe
- UT Austin
- Wildwood Bakehouse
- Trudy's Texas Star
- Juiceland
- Spider House
- Wheatsville Food Co-Op
- Central Market
- Buffalo Exchange
- Chevron
- Madam Mam's
- Taco Shack
- Kasbah Moroccan Lounge
- Fat Sal's Deli
- Dirty Martin's Place
- Whataburger
- Ken's Donuts
- Local Pub and Patio

2 Rio Grande Street Area

- Texas French Bread
- Cabo Bob's
- Nueces Liquor
- Grande Food Market
- Polka Dots Cupcake Factory
- Antone's Record Store
- Breed and Company
- Holy Macaroni
- Morales
- Rancho Rio Eatery
- Shell

FOR LEASING INFORMATION, CONTACT

GRAHAM TRULL **CHERYL SMITH**

(512) 279.9209

(512) 736.4778

graham.trull@kuceraco.com

cheryl.smith@kuceraco.com

1,200 RSF
SUITE 101

OFFICE SPACE FOR LEASE

\$2,500/Mo.
FULL SERVICE

7200 N. MOPAC EXPRESSWAY | AUSTIN, TX 78731 | (512) 346-0025 | See all of our listings at WWW.KUCERACO.COM.

All information contained herein, while based on information deemed reliable, has been gathered from various third-party sources, is not in any way warranted by The Kucera Companies, may not be entirely complete or accurate, and is subject to corrections, errors and/or omissions. This listing is subject to prior sale, lease, change in price and/or removal from the market without notice. The user of any information contained herein should conduct his/her own independent research including, without limitation, obtaining its own counsel and the advice of a real estate professional.