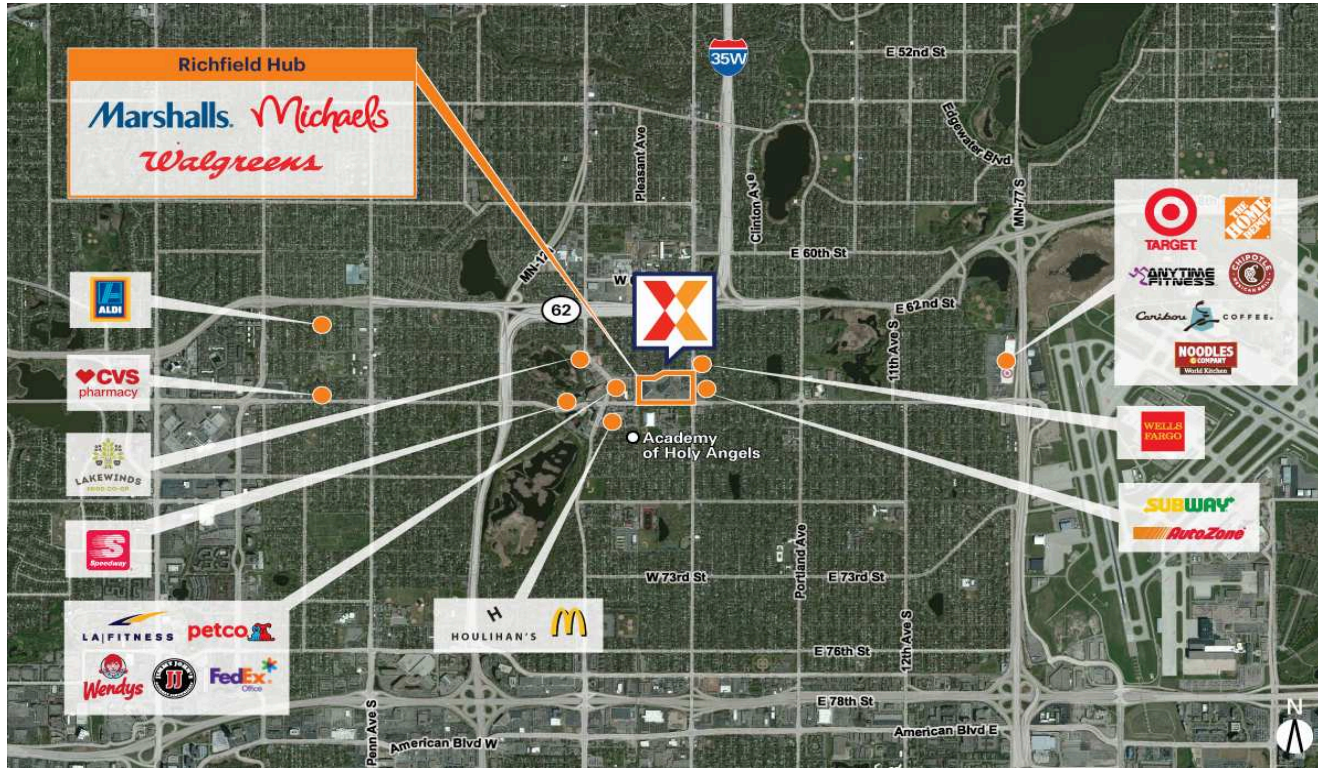


Richfield Hub

Minneapolis-St. Paul-Bloomington, MN-WI

44.8845, -93.2801

36 West 66th Street | Richfield, MN 55423-2316



Center Size: 214,402 SF



| Demographics | 1 Mile | 3 Mile | 5 Mile |
|--------------|----------|-----------|-----------|
| | 14,964 | 127,696 | 323,903 |
| | 6,757 | 55,165 | 141,495 |
| | \$74,691 | \$102,765 | \$101,055 |

Established community center serving the Richfield community for 60+ years

Surrounded by a dense population of 127,000+ with an average household income of \$102,000+ within 3 miles

Rainbow Foods-anchored center with top national retailers including Marshalls, Michaels, Walgreens, Dollar Tree, Foot Locker & T-Mobile

Close proximity to Minneapolis – St. Paul International Airport, Mall of America and downtown Minneapolis

Richfield Hub

Minneapolis-St. Paul-Bloomington, MN-WI

44.8845, -93.2801

36 West 66th Street | Richfield, MN 55423-2316

Available Space

| | |
|------|-----------|
| A | 52,195 SF |
| 10 | 7,545 SF |
| 20 | 1,399 SF |
| 21A | 1,234 SF |
| 22 | 3,432 SF |
| 25 | 5,418 SF |
| 33-2 | 807 SF |

Current Retailers

| | | |
|---------|-------------------------------|-----------|
| B | SciTech Academy | 26,185 SF |
| N.A.P. | Popeyes | 0 SF |
| N.A.P.1 | N.A.P. | 0 SF |
| N.A.P.2 | N.A.P. | 0 SF |
| 1 | Crossroads Panorama | 5,411 SF |
| 1A | Spring Hollow Books | 1,216 SF |
| 2 | Michaels | 24,235 SF |
| 3A | Dollar Tree | 11,801 SF |
| 12 | Foot Locker | 2,500 SF |
| 14 | Marshalls | 26,785 SF |
| 15 | GameStop | 1,698 SF |
| 16 | Rainbow | 6,000 SF |
| 17 | Sally Beauty Supply | 1,440 SF |
| 18 | Hot Comics & Collectables | 2,900 SF |
| 18A | T-Mobile | 1,450 SF |
| 19 | Golden Tobacco | 1,440 SF |
| 21B | City Nails | 1,891 SF |
| 23 | Walgreens | 12,000 SF |
| 26 | China Garden | 1,809 SF |
| 27 | Los Sanchez | 2,890 SF |
| 28/29 | Higher Grounds Academy Center | 3,512 SF |
| 33 | GNC | 1,221 SF |
| 34 | Burger King | 4,401 SF |
| 34-2 | Liberty Tax Service | 1,587 SF |
| 34-2A | Brixmor Leasing | 932 SF |



4186