

SINVIN

COMMERCIAL REAL ESTATE & ADVISORY

ROCKROSE



666 GREENWICH STREET

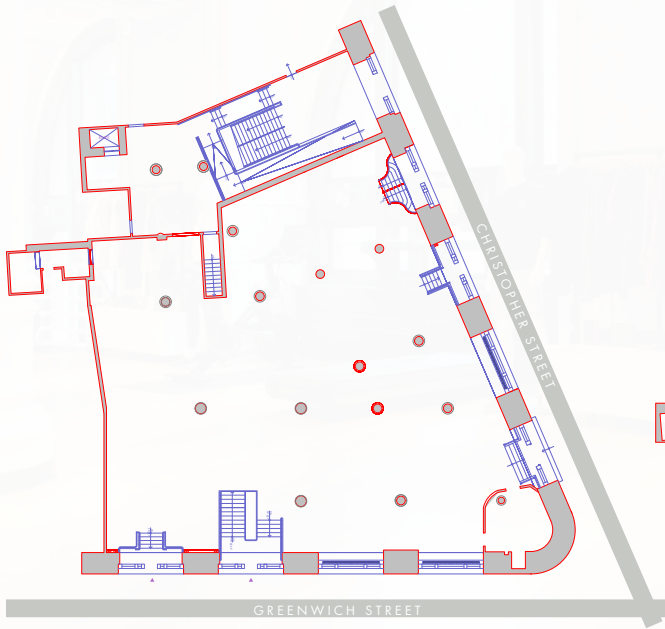
THE ARCHIVE BUILDING | At The Corner Of Christopher Street

Ground: 7,370 SF | Lower: 5,130 SF | Frontage: 100' on Greenwich, 100' on Christopher
Ceilings: 16' (Ground), 12' (Lower) | Term: Negotiable | Possession: 5/26/2020 | Asking Rent: Inquire

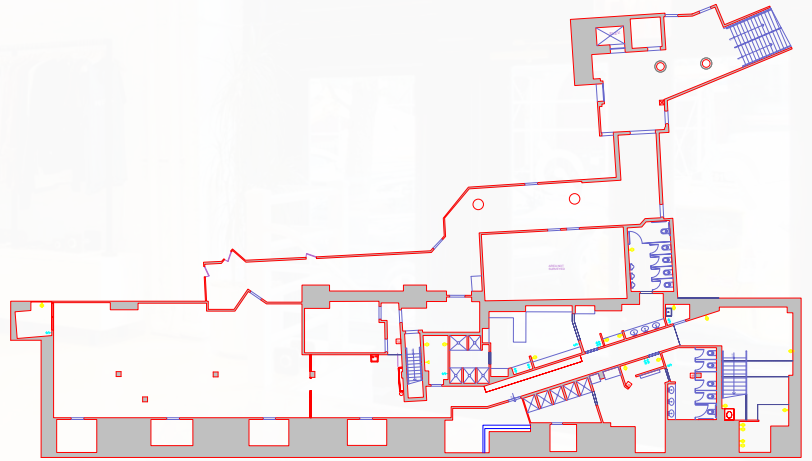


NOTES:

- Rare ground floor opportunity in the historic 1899 Archive Building
- Retail/office/showroom
- Logical divisions will be considered



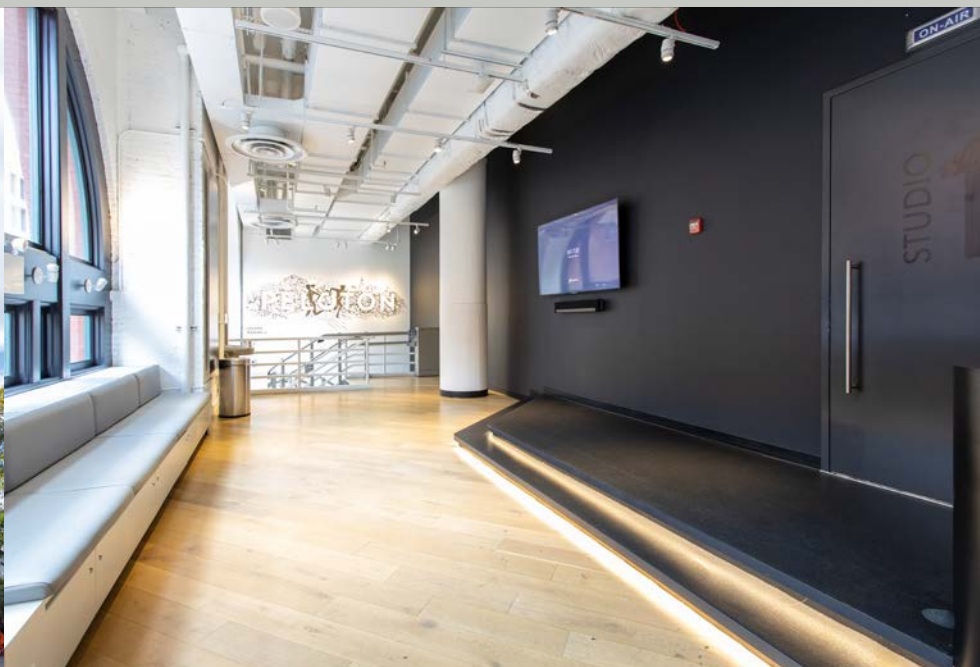
Ground

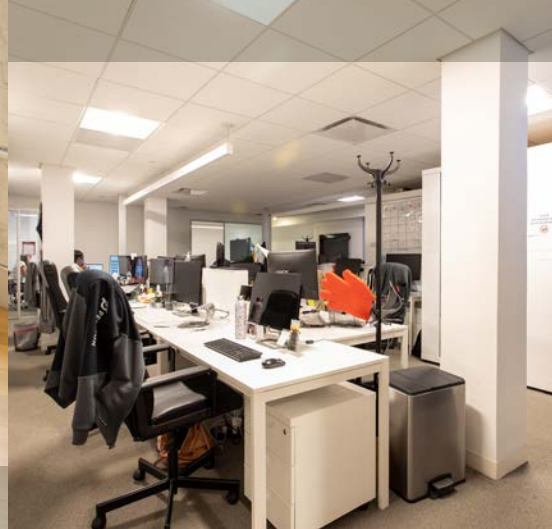
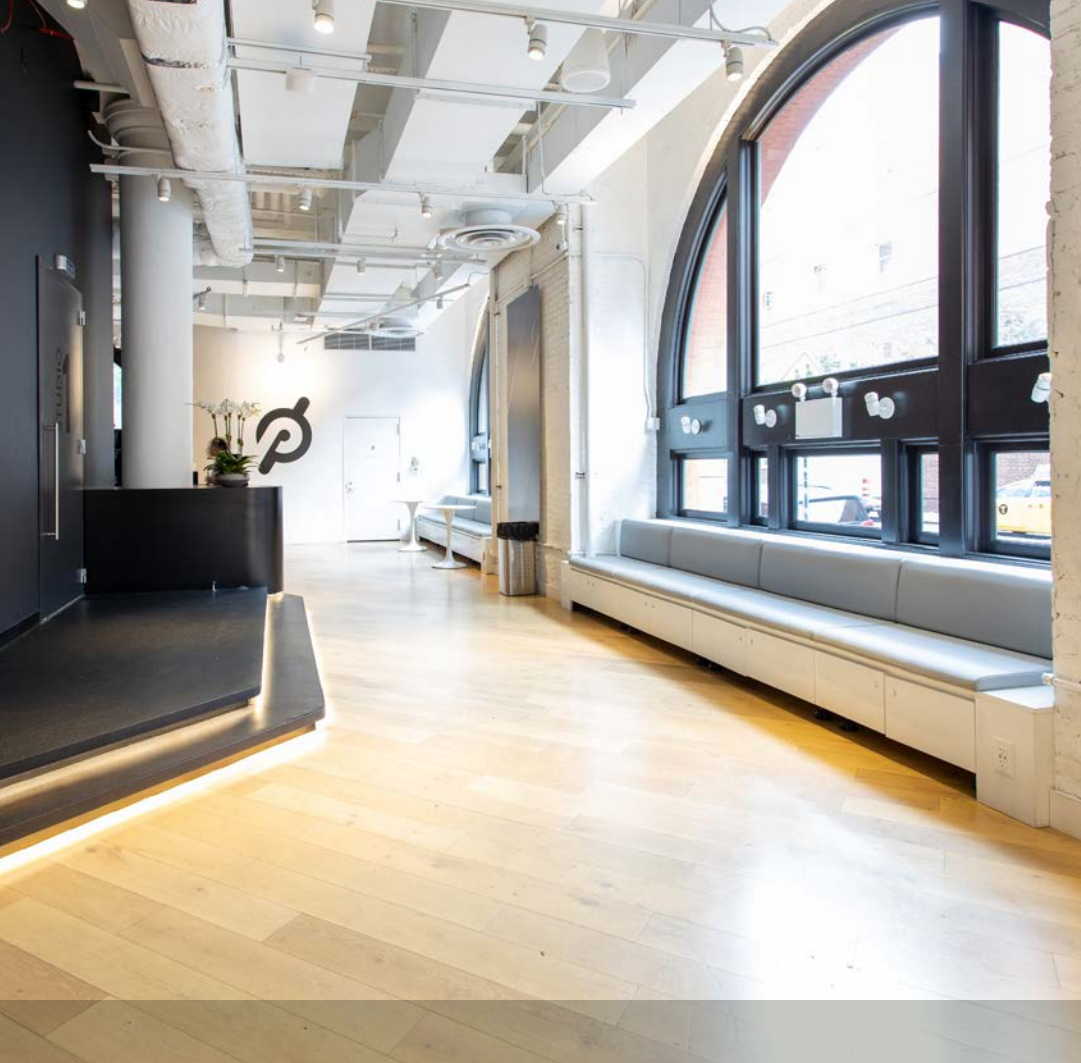


Lower

NEIGHBORS INCLUDE:

- Brooklyn Fare
- Adelaide Vintage Furniture
- SoulCycle
- The PATH Train
- St. Luke's School
- Bright Horizons
- Hudson River Greenway
- New Ohio Theatre





PLEASE CONTACT:

Christopher Owles

212.604.9002 chris@sinvin.com

Andrew Rose

646.673.8752 andrew@sinvin.com

 **SINVIN**
COMMERCIAL REAL ESTATE & ADVISORY

 **ROCKROSE**

