



## Where Location and Convenience Intersect

- ◆ Spec suites on level 7
- ◆ New corridors & restrooms
- ◆ Top of building signage available
- ◆ Conference center & board room
- ◆ Cafe
- ◆ 779 - 44,776 RSF available
- ◆ Covered parking and surface parking available
- ◆ On-site management & engineering



FOR LEASING INFORMATION, CONTACT:

CHRIS LIPSCOMB | 214.237.5022 | [chris.lipscomb@transwestern.com](mailto:chris.lipscomb@transwestern.com)  
JUSTIN MILLER | 972.361.1134 | [justin.miller@transwestern.com](mailto:justin.miller@transwestern.com)  
COHEN HOWARD | 214.446.4539 | [cohen.howard@transwestern.com](mailto:cohen.howard@transwestern.com)

2711 LBJ FREEWAY | DALLAS, TEXAS 75234

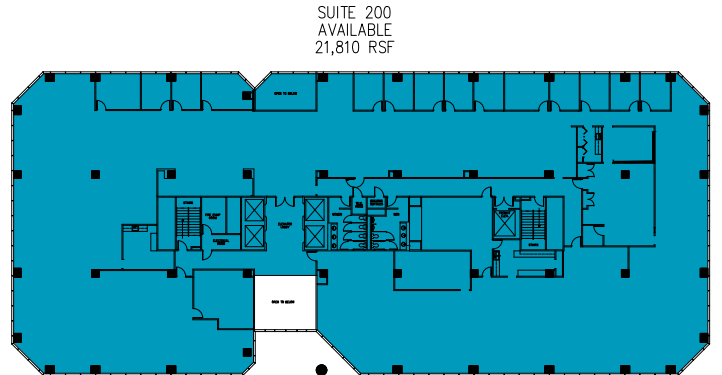
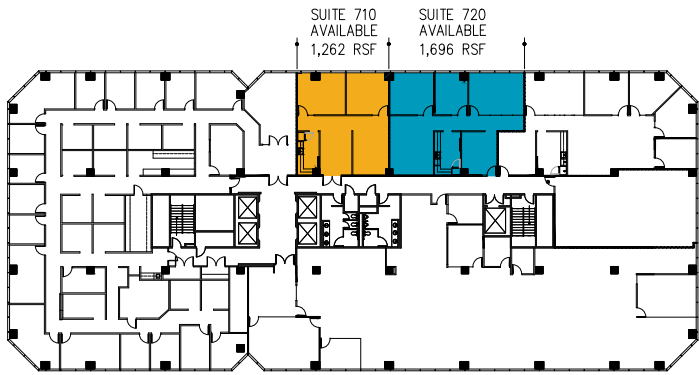




ELEVATOR BANK



SECURITY DESK



FOR LEASING INFORMATION, CONTACT:

2711 LBJ FREEWAY | DALLAS, TEXAS 75234

CHRIS LIPSCOMB | 214.237.5022 | [chris.lipscomb@transwestern.com](mailto:chris.lipscomb@transwestern.com)  
 JUSTIN MILLER | 972.361.1134 | [justin.miller@transwestern.com](mailto:justin.miller@transwestern.com)  
 COHEN HOWARD | 214.446.4539 | [cohen.howard@transwestern.com](mailto:cohen.howard@transwestern.com)

