

CLASS A OFFICE SPACE
FOR LEASE

700 BRAND

700 North Brand
Glendale, California



onni
GROUP



Kidder
Mathews

PROPERTY HIGHLIGHTS

84

WALK
SCORE

24/7

BUILDING
ACCESS



Owned and managed by
Onni Group



EV charging stations



Located in the bustling
Downtown Glendale district



Walking distance to numerous
restaurants and retail amenities
within Downtown Glendale,
Americana at Brand and Glendale
Galleria



Convenient access to the 134,
5, and 2 freeways



Close proximity to Hollywood
Burbank Airport

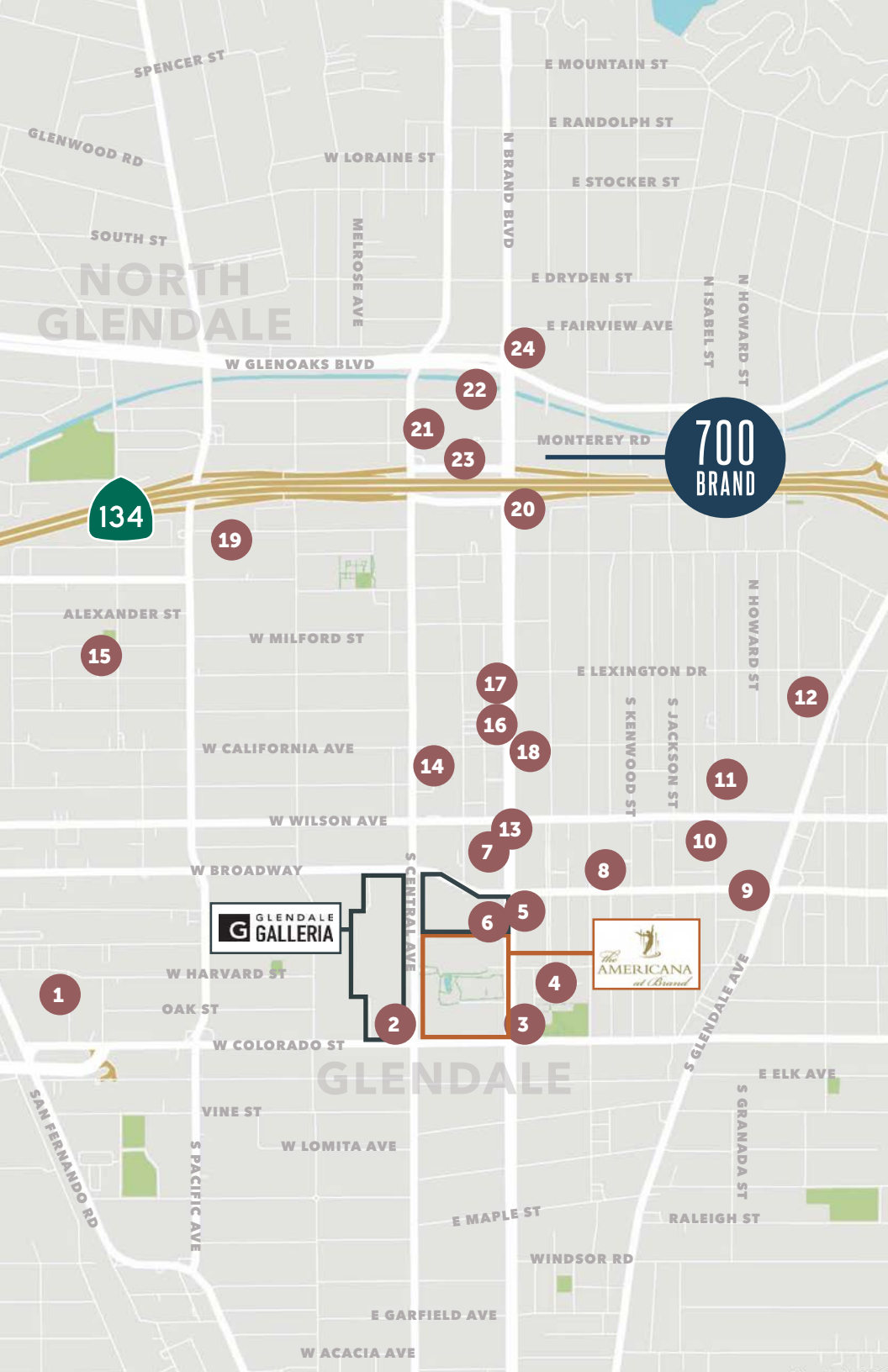


Parking ratio of 3.00/1,000
RSF leased at:
\$95.00 per unreserved stall/mo.
\$140.00 per reserved stall/mo.

700
BRAND

700 NORTH BRAND BLVD
GLENDALE, CALIFORNIA 91203

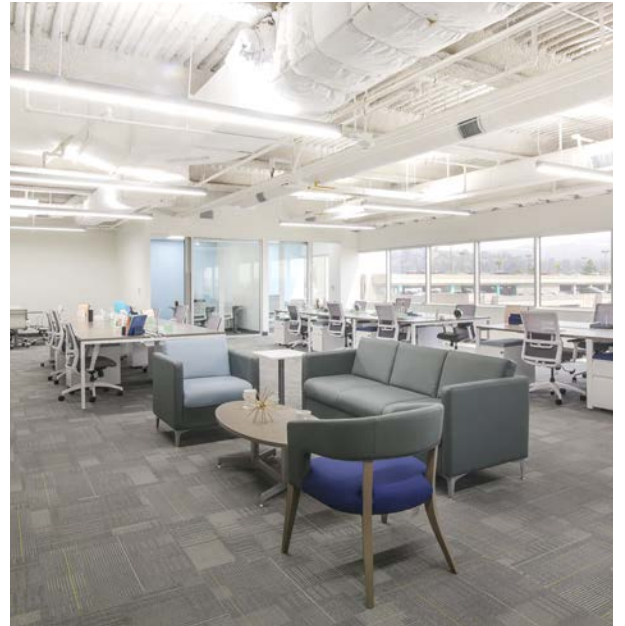




THE LOCATION

CENTRAL TO NUMEROUS RESTAURANTS AND RETAIL IN DOWNTOWN GLENDALE, 700 BRAND IS PERFECTLY SITUATED FOR AN AMENITY-RICH EXPERIENCE.

- | | | | |
|----|----------------------------|----|---|
| 1 | The Home Depot | 14 | Sears |
| 2 | Target | 15 | 24 Hour Fitness Active |
| 3 | Shake Shack | 16 | Porto's Bakery |
| 4 | Glendale Central Library | 17 | Bank Of America Financial Center |
| 5 | Glendale Marketplace | 18 | 24 Hour Fitness |
| 6 | In-N-Out Burger | 19 | Days Inn Glendale |
| 7 | California Pizza Kitchen | 20 | Chase Bank |
| 8 | US Post Office | 21 | Embassy Suites |
| 9 | Glendale Courthouse | 22 | Hilton Los Angeles North/ Glendale & Executive Meeting Center |
| 10 | Glendale Police Department | 23 | Equinox |
| 11 | Glendale Fashion Center | 24 | Trader Joe's |
| 12 | Whole Foods | | |
| 13 | Tender Greens | | |



700 BRAND

700 NORTH BRAND BLVD
GLENDALE, CALIFORNIA 91203

AVAILABLE SUITES

SUITE	RSF	RATE	FEATURES
420	2,836	\$3.00/RSF per month FSG	Newly constructed move-in ready suite with creative finishes. Double door identity with 2 glass offices, glass conference room, break room, open work area and reception.
835	2,440	\$3.00/RSF per month FSG	4 window offices, conference room, open work area and reception.
910	3,166	\$3.00/RSF per month FSG	Newly constructed move-in ready suite with creative finishes. 3 glass offices, glass conference room, break area, open work area and storage.
1180	3,315	\$3.00/RSF per month FSG	4 window offices, break room, file/storage room, open work area and reception.

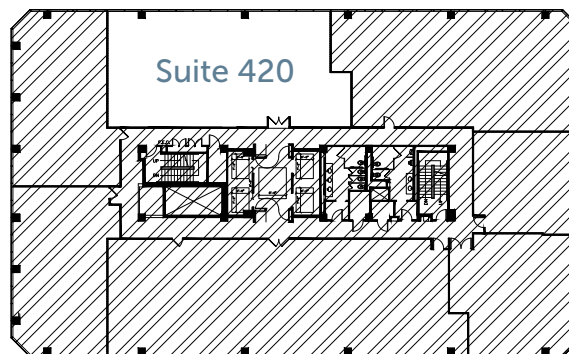
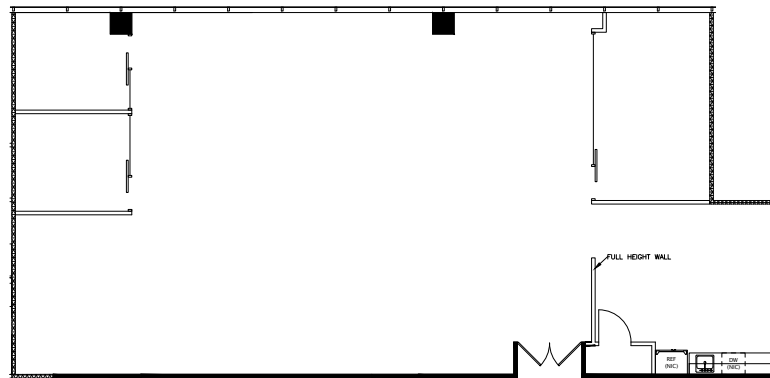


SUITE 420

2,836
SQUARE
FEET

\$3.00
RSF/MO
FSG

NEWLY CONSTRUCTED MOVE-IN READY SUITE WITH CREATIVE FINISHES. DOUBLE DOOR IDENTITY WITH 2 GLASS OFFICES, GLASS CONFERENCE ROOM, BREAK ROOM, OPEN WORK AREA AND RECEPTION.



700
BRAND

700 NORTH BRAND BLVD
GLENDALE, CALIFORNIA 91203

onni[®]
group

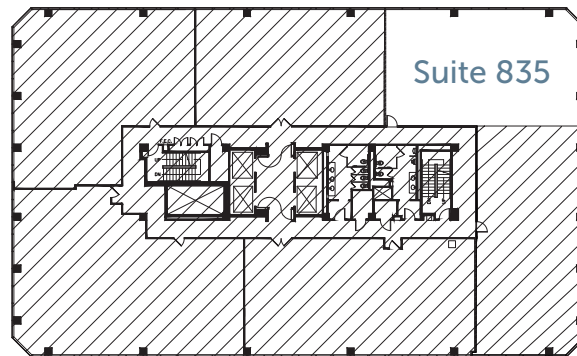
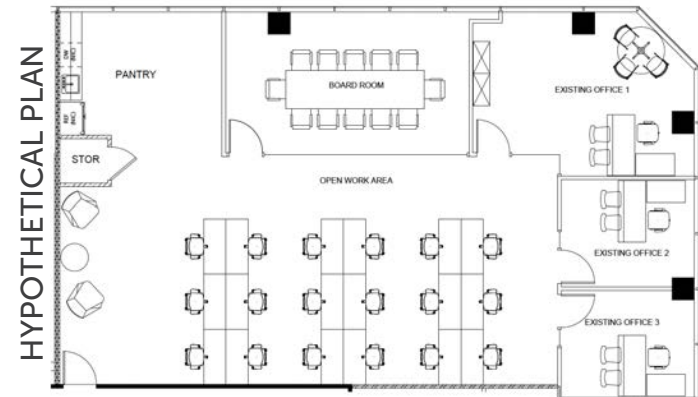
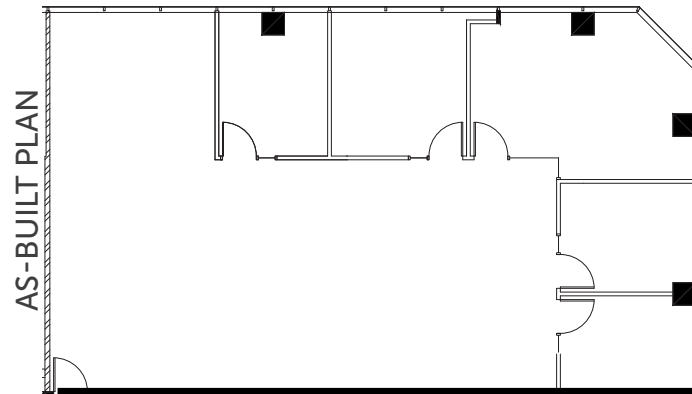
km Kidder
Mathews

SUITE 835

2,440
SQUARE
FEET

\$3.00
RSF/MO
FSG

4 WINDOW OFFICES, CONFERENCE ROOM, OPEN WORK AREA AND RECEPTION.



700 BRAND

700 NORTH BRAND BLVD
GLENDALE, CALIFORNIA 91203



SUITE 910

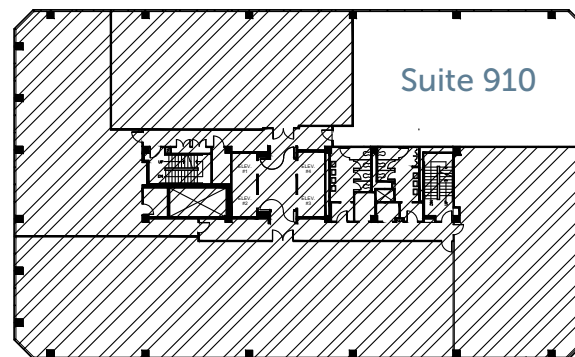
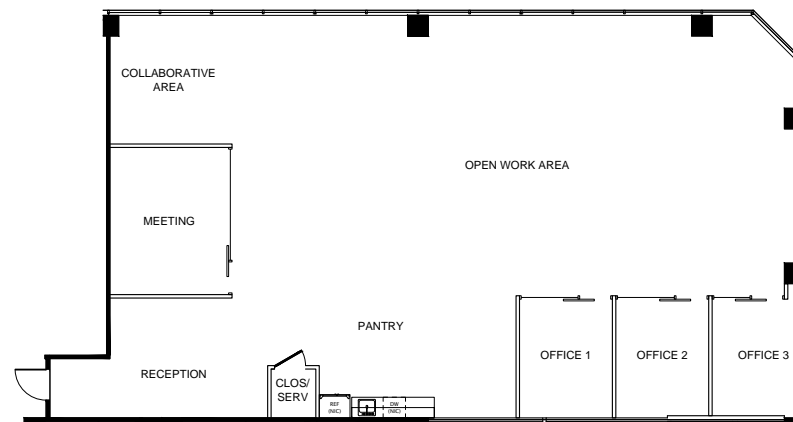
3,166

SQUARE
FEET

\$3.00

RSF/MO
FSG

NEWLY CONSTRUCTED MOVE-IN READY SUITE WITH CREATIVE FINISHES. 3 GLASS OFFICES, GLASS CONFERENCE ROOM, BREAK AREA, OPEN WORK AREA AND STORAGE.



700 BRAND

700 NORTH BRAND BLVD
GLENDALE, CALIFORNIA 91203

onni[®]
group

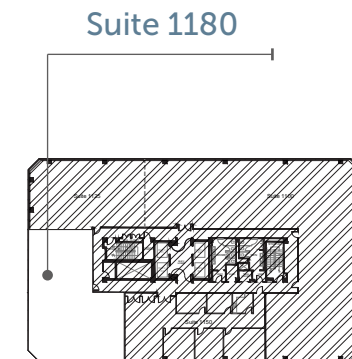
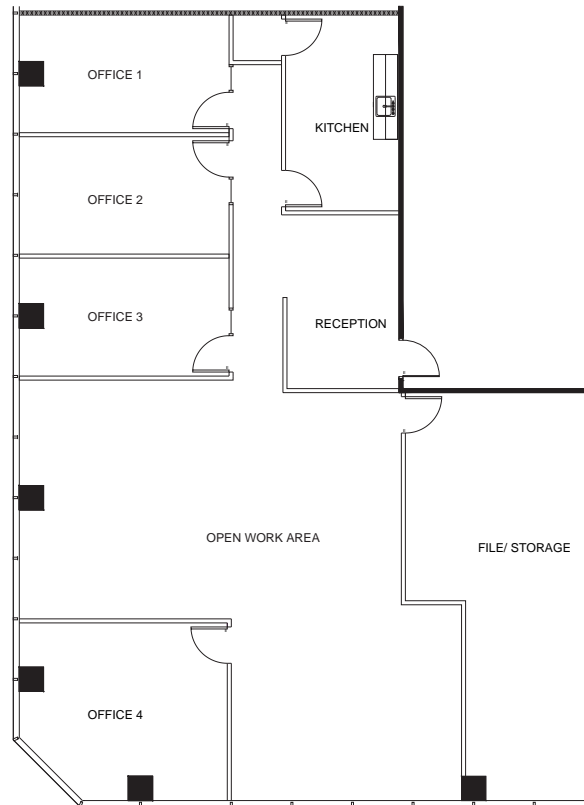
km Kidder
Mathews

SUITE 1180

3,315
SQUARE
FEET

\$3.00
RSF/MO
FSG

4 WINDOW OFFICES, BREAK ROOM, FILE/STORAGE ROOM, OPEN WORK AREA AND RECEPTION.



700 BRAND

700 NORTH BRAND BLVD
GLENDALE, CALIFORNIA 91203

onni[®]
group

km Kidder
Mathews

700 BRAND

700 North Brand Blvd
Glendale, California 91203

FOR MORE INFORMATION, PLEASE CONTACT:

BILL BOYD
818.550.8200
bill.boyd@kidder.com
LIC N° 00816177

LINDA LEE
818.550.8200
linda.lee@kidder.com
LIC N° 01278768

SCOTT UNGER
818.550.8200
scott.unger@kidder.com
LIC N° 01855517

KIDDER.COM

This information supplied herein is from sources we deem reliable. It is provided without any representation, warranty, or guarantee, expressed or implied as to its accuracy. Prospective Buyer or Tenant should conduct an independent investigation and verification of all matters deemed to be material, including, but not limited to, statements of income and expenses. Consult your attorney, accountant, or other professional advisor.

