

2380

E BIDWELL STREET



FOR SALE OR LEASE | ±8,837 SF

Scott Bennett
Senior Vice President
+1 916 563 3013
scott.bennett@colliers.com
Lic. No. 01351389

Thomas Walcott, CCIM, SIOR
Executive Vice President
+1 916 563 3002
thomas.walcott@colliers.com
Lic. No. 01121178

Jason Rutherford
Senior Vice President
+1 916 563 3059
jason.rutherford@colliers.com
Lic. No. 01260682



2380
E BIDWELL STREET

PROPERTY DETAILS



The property is situated on East Bidwell Street near Highway 50 in the Broadstone Village Center. The building features brick construction with extensive landscaping and monument sign.

- » Highly visible freestanding building on E. Bidwell St. - average daily traffic counts of $\pm 29,396$ vehicles
- » ± 5.2 miles from Highway 50
- » Current buildout is financial firm – perfect for other high image professional businesses
- » Currently single tenant - divisible to 2, 3 or 4 tenants



FOR SALE

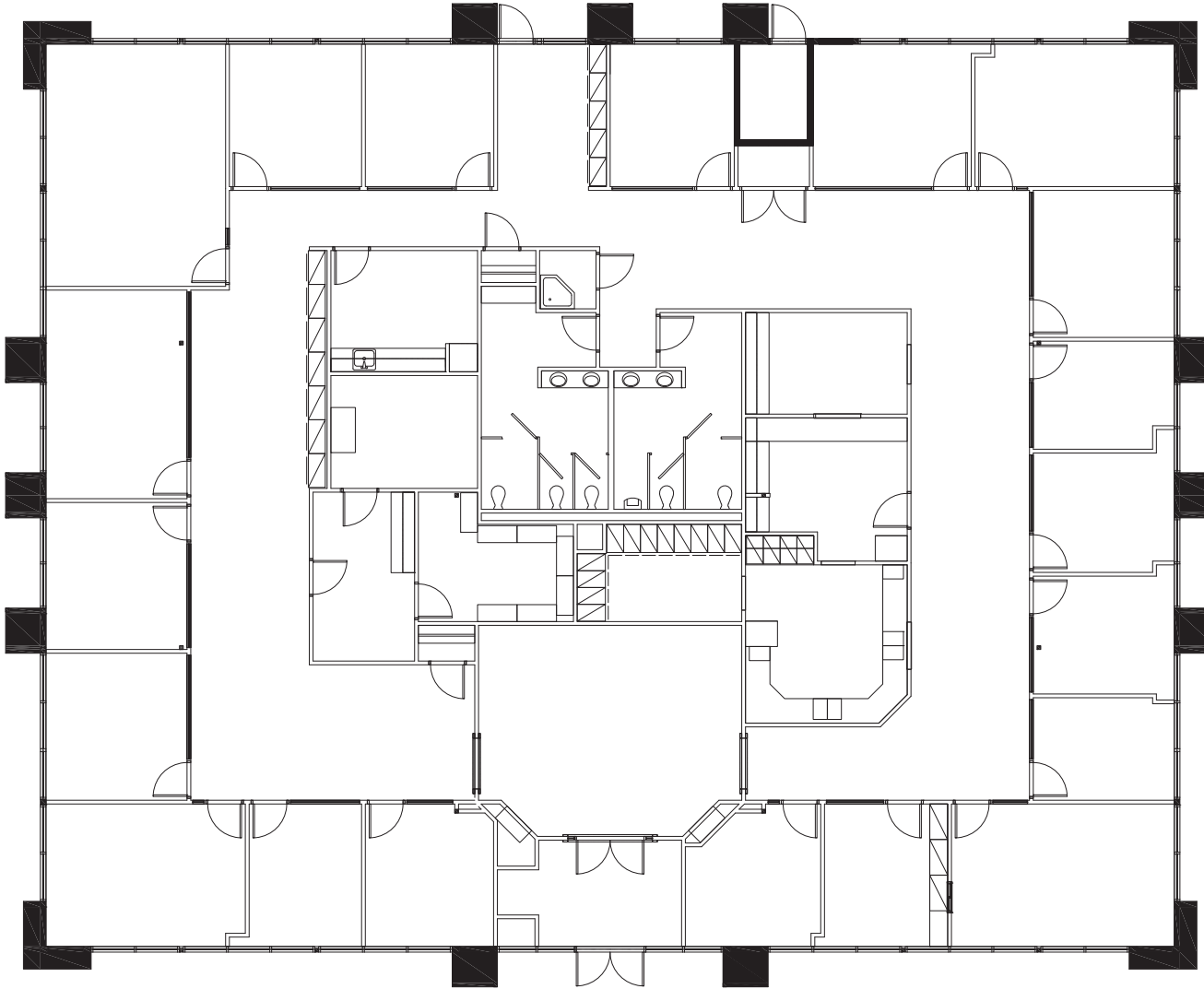
- » \$2,518,545

FOR LEASE

- » \$2.00/SF NNN
- » Lease available October 1, 2020

FLOOR PLAN

2380
E BIDWELL STREET



This document has been prepared by Colliers International for advertising and general information only. Colliers International makes no guarantees, representations or warranties of any kind, expressed or implied, regarding the information including, but not limited to, warranties of content, accuracy and reliability. Any interested party should undertake their own inquiries as to the accuracy of the information. Colliers International excludes unequivocally all inferred or implied terms, conditions and warranties arising out of this document and excludes all liability for loss and damages arising therefrom. This publication is the copyrighted property of Colliers International and/or its licensor(s). Real estate officer license corporation identification number 01908588. ©2019. All rights reserved.

LOCATION – Amenities within ±2 miles

2380
E BIDWELL STREET

Shopping



Food



PALLADIO
AT BROADSTONE

SHOP, DINE AND PLAY
Home of over ±80 national retail stores, dining, movie theaters and seasonal events.
www.gopalladio.com

DISTANCE TO	MILES
SACRAMENTO	±27.1
ROSEVILLE	±15.3
NATOMAS	±32.1
ELK GROVE	±35.4
SMF (AIRPORT)	±37

