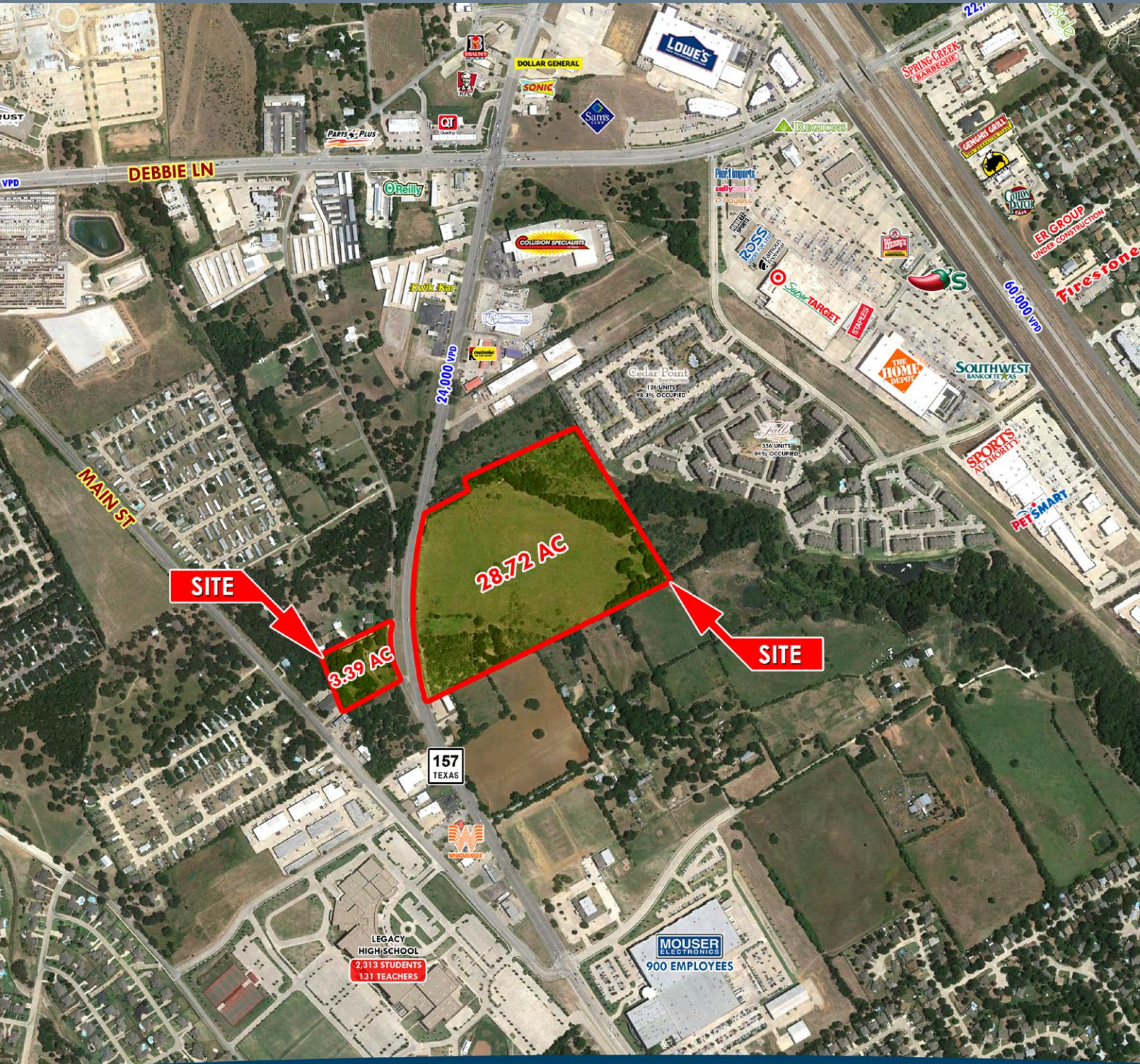


# SOUTH OF SEC FM 157 & DEBBIE LN.

28± AC. AND 3± AC. FOR SALE

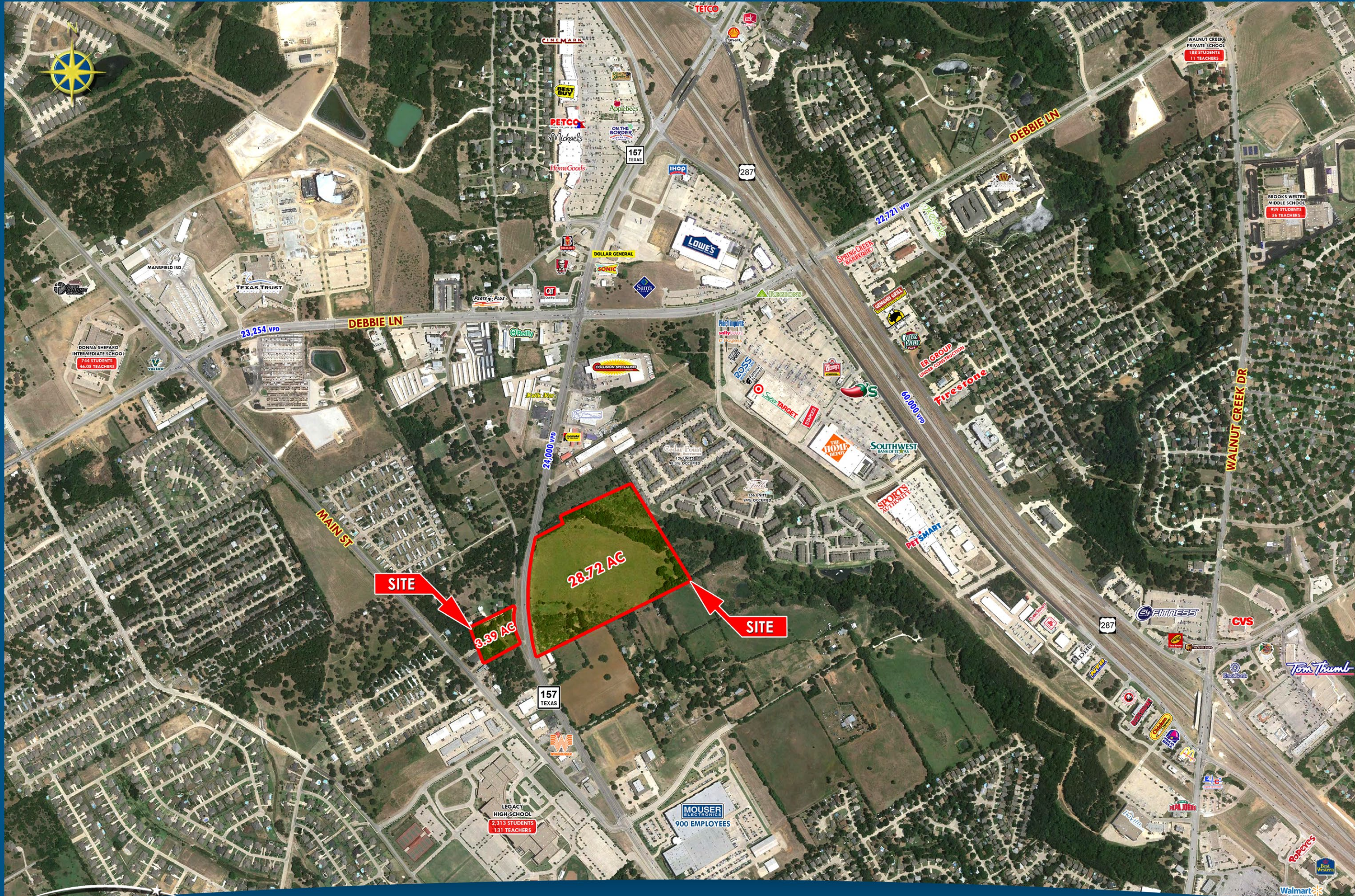
MANSFIELD, TEXAS

KEN REIMER



LEASING | TENANT REPRESENTATION | LAND | INVESTMENT SALES | PROPERTY MANAGEMENT







# SOUTH OF SEC FM 157 & DEBBIE LN.



HIGHLIGHTS	
<b>TRACT 1:</b>	28.721 Acres
• ZONING:	C-2 - Community Business
• UTILITIES:	On-site
<b>TRACT 2:</b>	3.39 Acres
• ZONING:	SF - 12/22
• UTILITIES:	On-site

DEMOGRAPHICS	1 MILE	3 MILE	5 MILE
2017 EST POPULATION	7,279	65,707	175,739
2017 EST AVG HH INCOME	\$91,502	\$105,707	\$101,164

TRAFFIC COUNTS	
FM 157	24,000 VPD
DEBBIE LN.	23,254 VPD

