

# FOR LEASE: 5101 SOUTH NEVADA AVENUE, SUITE 130

5101 South Nevada Avenue  
Suite 130  
Sioux Falls SD 57108



AVAILABLE:	1,022 SF
PRICE:	\$15.75 PSF
TERMS:	NNN
ZONING:	PD
YEAR BUILT:	2001
OCCUPANCY:	Fall 2018
2018 Estimated NNN	\$6.00



For more information,  
please contact:

**Mike Van Buskirk**

**p:** 605.361.8211

**c:** 605.366.0936

**e:** Mike@VBCLink.com

## PROPERTY INFORMATION

- Class A office space situated in professional office building.
- Easy access to I-229, I-29, 57th Street and Louise Avenue.
- Plentiful windows for excellent natural light.
- Monument signage available.
- Space consists of reception/waiting room, two offices and open work space.
- Neighbors include New York Life, AARP and Charisma Property Management.

REAL ESTATE DEVELOPMENT | BROKERAGE | INVESTMENT  
MANAGEMENT | COMMERCIAL CONSTRUCTION | ENGINEERING | ARCHITECTURE

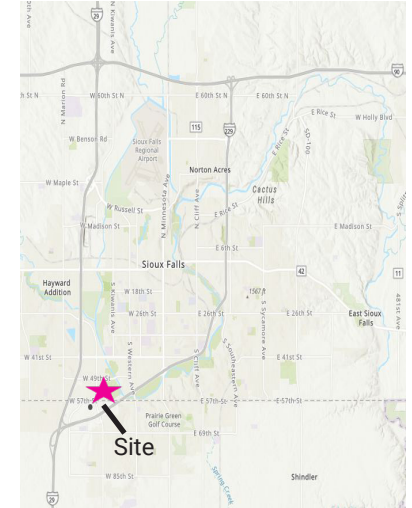
2571 S Westlake Dr, Ste 100, Sioux Falls, SD 57106 | **o:** 605.361.8211 | **f:** 605.361.8052 | **w:** VBCLink.com



This information has been secured from sources we believe to be reliable, but we make no representation or warranties, expressed or implied, as to the accuracy of the information. All references to age, square footage, income, and expenses are approximate. Buyers or Lessors should conduct their own independent investigations and rely only on those results.

# FOR LEASE: 5101 SOUTH NEVADA AVENUE, SUITE 130

5101 South Nevada Avenue  
Suite 130  
Sioux Falls SD 57108



For more information,  
please contact:

**Mike Van Buskirk**

**p:** 605.361.8211

**c:** 605.366.0936

**e:** Mike@VBCLink.com



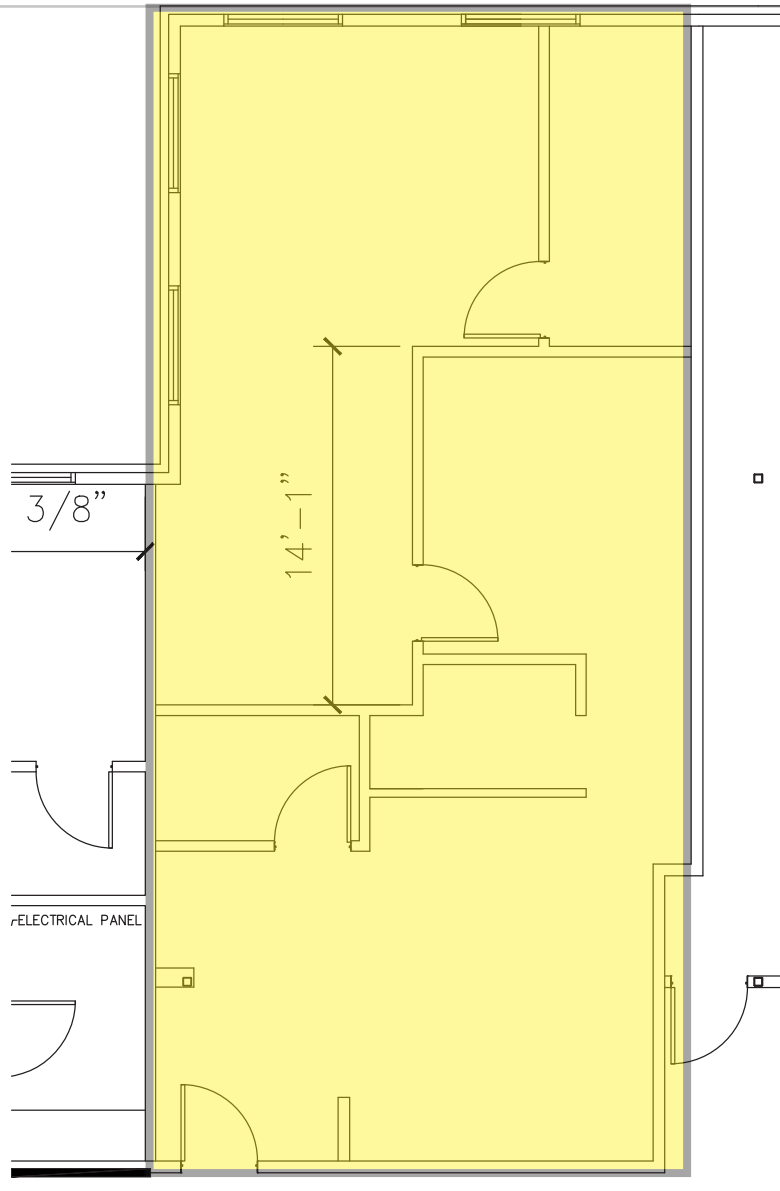
This information has been secured from sources we believe to be reliable, but we make no representation or warranties, expressed or implied, as to the accuracy of the information. All references to age, square footage, income, and expenses are approximate. Buyers or Lessors should conduct their own independent investigations and rely only on those results.

REAL ESTATE DEVELOPMENT | BROKERAGE | INVESTMENT  
MANAGEMENT | COMMERCIAL CONSTRUCTION | ENGINEERING | ARCHITECTURE

2571 S Westlake Dr, Ste 100, Sioux Falls, SD 57106 | **o:** 605.361.8211 | **f:** 605.361.8052 | **w:** VBCLink.com

# FOR LEASE: 5101 SOUTH NEVADA AVENUE, SUITE 130

5101 South Nevada Avenue  
Suite 130  
Sioux Falls SD 57108



For more information,  
please contact:

**Mike Van Buskirk**

p: 605.361.8211

c: 605.366.0936

e: Mike@VBCLink.com

**VanBuskirk**  
COMPANIES

This information has been secured from sources we believe to be reliable, but we make no representation or warranties, expressed or implied, as to the accuracy of the information. All references to age, square footage, income, and expenses are approximate. Buyers or Lessors should conduct their own independent investigations and rely only on those results.

REAL ESTATE DEVELOPMENT | BROKERAGE | INVESTMENT  
MANAGEMENT | COMMERCIAL CONSTRUCTION | ENGINEERING | ARCHITECTURE

2571 S Westlake Dr, Ste 100, Sioux Falls, SD 57106 | o: 605.361.8211 | f: 605.361.8052 | w: VBCLink.com