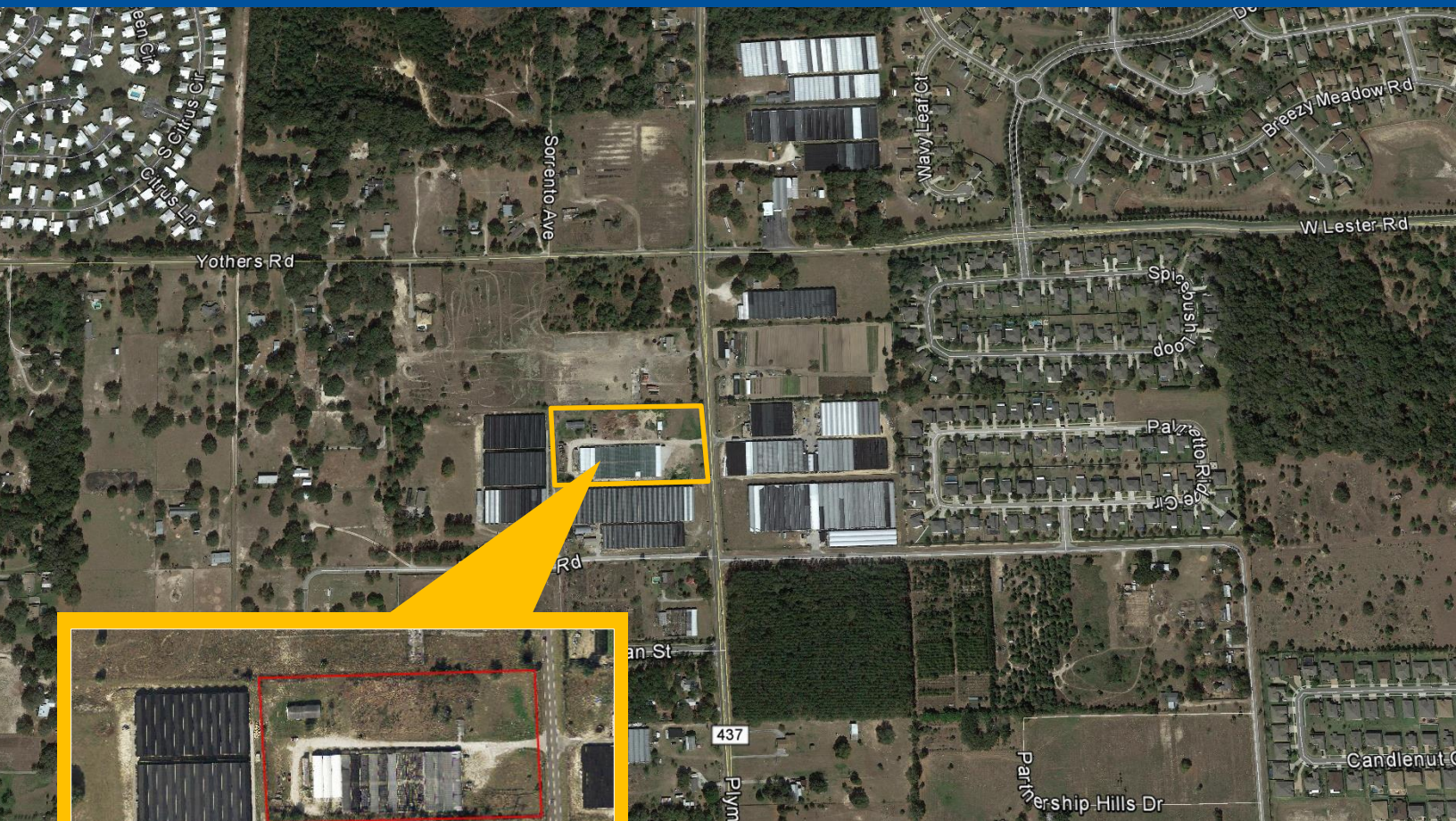


1808 PLYMOUTH SORRENTO ROAD

Apopka | Florida 34787

LAND PARCEL FOR SALE

4.76+/- acres



PROPERTY FEATURES

- \$394,000 asking price
- 4.76+/- acres
- Zoned AG, City of Apopka
- 332' of frontage along Plymouth Sorrento Road
- Exposure from Wekiva Parkway extension (S.R. 429)
- 44,000+/- SF metal frame greenhouse

For additional information,
please contact:

MARK MONTGOMERY

Sr. Vice President

407.540.7739

Mark.montgomery@cnlcre.com

Licensed Real Estate Broker

CNL Center II
420 S. Orange Avenue
Suite 950
Orlando, FL 32801-3336
t: 407.540.7700
f: 407.540.7750

 CNL Commercial Real Estate

ALTHOUGH ALL INFORMATION FURNISHED REGARDING FOR SALE, RENTAL OR FINANCING IS FROM SOURCES WE DEEM RELIABLE, SUCH INFORMATION HAS NOT BEEN VERIFIED AND NO EXPRESS REPRESENTATION IS MADE NOR IS ANY IMPLIED AS TO THE ACCURACY THEREOF, AND IT IS SUBMITTED SUBJECT TO ERRORS, OMISSIONS, CHANGES OF PRICE, RENTAL OR OTHER CONDITIONS, PRIOR SALE, LEASE OR FINANCING, OR WITHDRAWAL WITHOUT NOTICE.

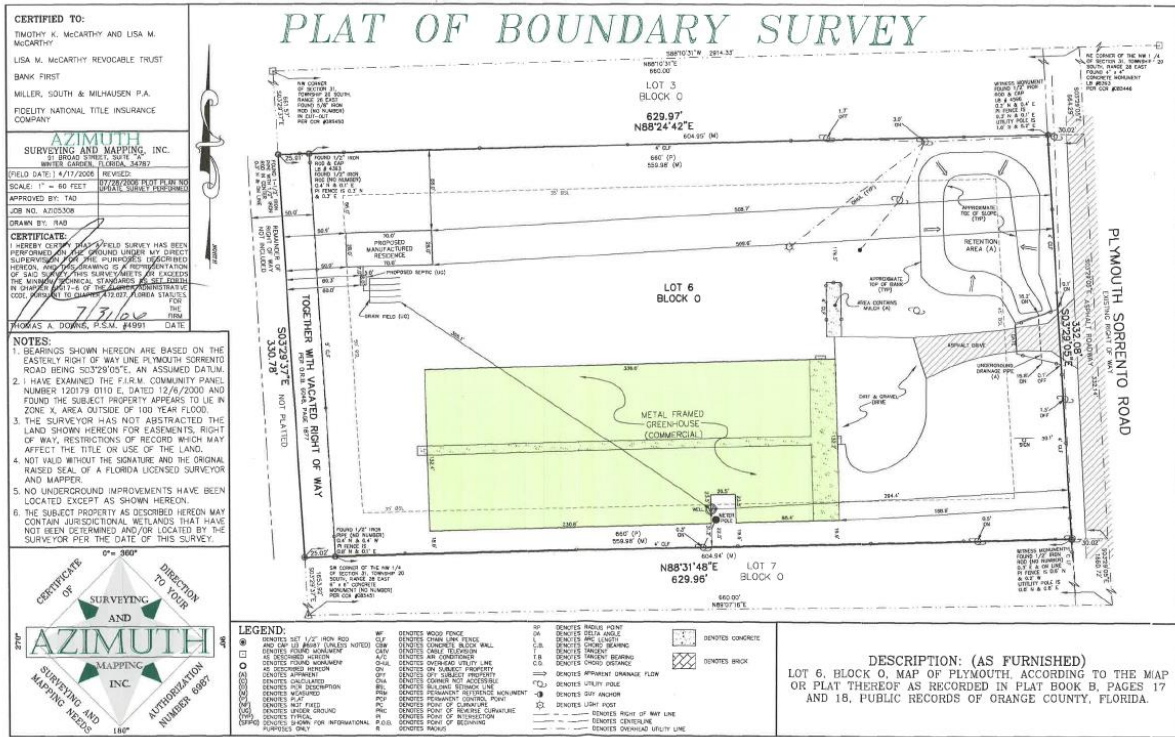
To browse our entire portfolio
of available properties visit:
www.cnlcre.com

1808 PLYMOUTH SORRENTO ROAD

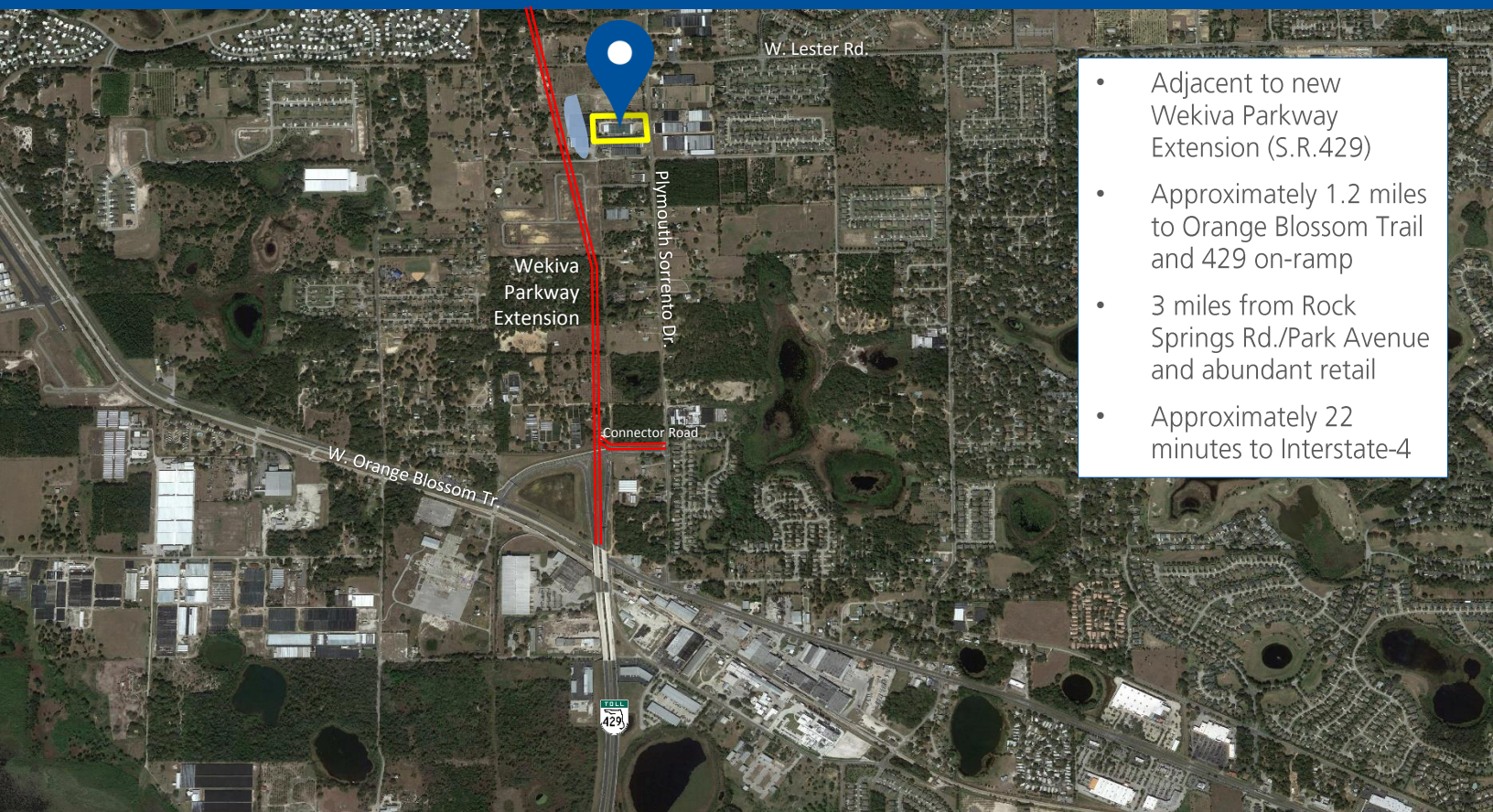
Apopka | Florida 34787

4.76+/- acres for sale

Survey



Location Map



- Adjacent to new Wekiva Parkway Extension (S.R.429)
- Approximately 1.2 miles to Orange Blossom Trail and 429 on-ramp
- 3 miles from Rock Springs Rd./Park Avenue and abundant retail
- Approximately 22 minutes to Interstate-4