

VIEW ONLINE

colliers.com

centralcrossings.com

PRICE REDUCTION!

# Land For Sale

## 45 +/- Acres

11301 AR 72 Hwy W, Centerton | Arkansas

Maintained soccer fields and on-site 12,600 square-foot building in Centerton, AR. Located on Highway 72 and surrounded by upscale neighborhoods. This is the only property zoned commercial off Hwy 72 and has great potential opportunity for retail, restaurant, and leisure.

Contact us:

**Steven P. Lane**

Managing Director | Arkansas

D: +1 479 845 1515

C: +1 479 366 6000

steve.lane@colliers.com

**Nathan Apel**

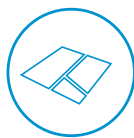
Brokerage | Arkansas

D: +1 479 845 1516

C: +1 501 765 3948

nathan.apel@colliers.com

### FEATURES



45.0 +/- acres



Zoned Commercial



2 miles from the new Bentonville West High School and 5 miles to the new Bella Vista Bypass

\$3,950,000

~~\$5,100,000~~



Colliers International

4204 S. Pinnacle Hills Pkwy | Suite 102

Rogers, AR 72758

+1 479 636 9000

www.colliers.com

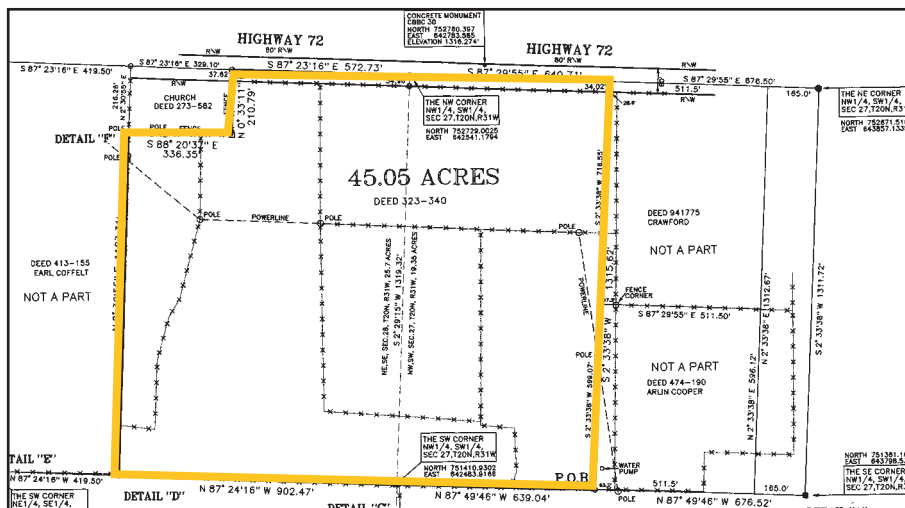
This document has been prepared by Colliers International for advertising and general information only. Colliers International makes no guarantees, representations or warranties of any kind, expressed or implied, regarding the information including, but not limited to, warranties of content, accuracy and reliability. Any interested party should undertake their own inquiries as to the accuracy of the information. Colliers International excludes unequivocally all inferred or implied terms, conditions and warranties arising out of this document and excludes all liability for loss and damages arising there from. This publication is the copyrighted property of Colliers International and/or its licensor(s). ©2018 All rights reserved.



# < Aerial



## SURVEY >



## Contact us:

**Steven P. Lane**

Managing Director | Arkansas

D: +1 479 845 1515

C: +1 479 366 6000

steve.lane@colliers.com

**Nathan Apel**

Brokerage | Arkansas

D: +1 479 845 1516

C: +1 501 765 3948

nathan.apel@colliers.com

## DEMOGRAPHICS >

	1 Mile	3 Miles	5 Miles
Est. Population 2018	3,183	29,790	59,611
Proj. Population 2023	3,725	34,994	69,334
Est. Households 2018	1,014	10,452	21,597
Proj. Households 2023	1,189	12,342	25,119
Avg. Est. Household Income 2018	\$93,357	\$97,265	\$92,308

Colliers International

4204 S. Pinnacle Hills Pkwy | Suite 102

Rogers, AR 72758

+1 479 636 9000

www.colliers.com

