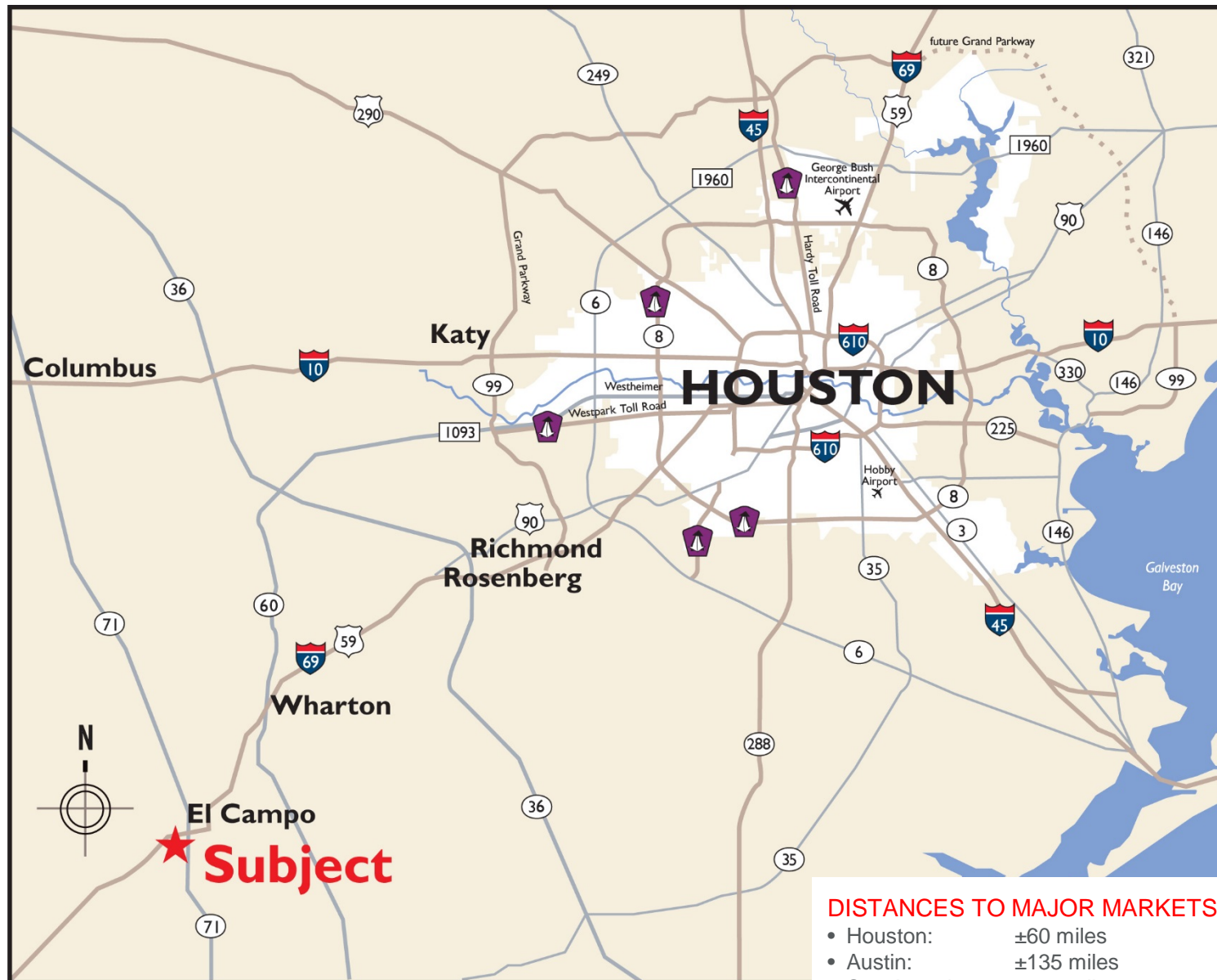


±1,097.3 Acres Rail-Served Land  
US 59/I-69 at CR 307 | Wharton County, TX



**DISTANCES TO MAJOR MARKETS**

- Houston: ±60 miles
- Austin: ±135 miles
- San Antonio: ±168 miles
- Victoria: ±51 miles
- Corpus Christi: ±130 miles
- Brownsville: ±275 miles
- Laredo: ±253 miles
- Dallas: ±290 miles
- Monterrey: ±400 miles
- New Orleans: ±405 miles
- Las Cruces: ±763 miles

**USEFUL LINKS**

- [KCS Rail](#)
- [KCS Network Map](#)
- [AEP Texas](#)
- [Greater Houston Partnership](#)
- [State of Texas Incentive Summary](#)

For more information, contact:

**John F. Littman, SIOR** (713) 963 2862 [John.Littman@cushwake.com](mailto:John.Littman@cushwake.com)  
**B. Kelley Parker III, SIOR** (713) 963 2896 [Kelley.Parker@cushwake.com](mailto:Kelley.Parker@cushwake.com)  
**Coe Parker, SIOR** (713) 963 2825 [Coe.Parker@cushwake.com](mailto:Coe.Parker@cushwake.com)

1330 Post Oak Boulevard  
Suite 2700  
Houston, TX 77056  
cushmanwakefield.com

Cushman & Wakefield, ©2015. No warranty or representation, express or implied, is made to the accuracy or completeness of the information contained herein, and same is submitted subject to errors, omissions, change of price, rental or other conditions, withdrawal without notice, and to any special listing conditions imposed by the property owner(s). As applicable, we make no representation as to the condition of the property (or properties) in question. Cushman & Wakefield of Texas, Inc. – Licensed Real Estate Brokers.

FOR SALE



±1,097.3 Acres Rail-Served Land  
US 59/I-69 at CR 307 | Wharton County, TX



As exclusive broker, Cushman & Wakefield of Texas, Inc. is pleased to offer this ±1,097.3 acre, rail-served, industrial tract in three parcels in Wharton County, Texas. Located on the US 59/I-69 NAFTA highway corridor, the site has excellent access, visibility, rail and natural gas. The property is located within ±60 miles of Houston, and is within an attainment area.

For more information, contact:

**John F. Littman, SIOR** (713) 963 2862 [John.Littman@cushwake.com](mailto:John.Littman@cushwake.com)  
**B. Kelley Parker III, SIOR** (713) 963 2896 [Kelley.Parker@cushwake.com](mailto:Kelley.Parker@cushwake.com)  
**Coe Parker, SIOR** (713) 963 2825 [Coe.Parker@cushwake.com](mailto:Coe.Parker@cushwake.com)

1330 Post Oak Boulevard  
Suite 2700  
Houston, TX 77056  
cushmanwakefield.com

Cushman & Wakefield, ©2015. No warranty or representation, express or implied, is made to the accuracy or completeness of the information contained herein, and same is submitted subject to errors, omissions, change of price, rental or other conditions, withdrawal without notice, and to any special listing conditions imposed by the property owner(s). As applicable, we make no representation as to the condition of the property (or properties) in question. Cushman & Wakefield of Texas, Inc. – Licensed Real Estate Brokers.

# ±1,097.3 Acres Rail-Served Land

US 59/I-69 at CR 307 | Wharton County, TX



## Location

- Wharton County, TX – US 59/I-69 at CR. 307
- ±50 miles from Grand Parkway @ US 59/I-69
- Adjacent to El Campo city limits

## Size

- Tract A: ±734.9 acres
- Tract B: ±90 acres
- Tract C: ±272.37 acres

## Natural Gas Providers

- Multiple natural gas lines/sources available
- Houston Pipeline Company (formerly Tennessee Gas Transmission) on site; Texas Liberty Pipeline, Copano, Viper, Reliant gas lines nearby

## Pipeline Access

- Three natural gas and other product lines – discuss with broker

## Rail Access

- Class I service available from Kansas City Southern (KCS) – adjacent to property

## Power

- Provided by AEP Texas
- 138 kV lines adjacent on south side of site

## Utilities

- Potable water/sanitary sewer available from City of El Campo
- Additional process water available from on-site irrigation wells

## Floodplain

- Not in floodplain, except for ±10% at southeast corner of Tract A

## Air Emission Status

- Attainment status per TCEQ

## Pricing

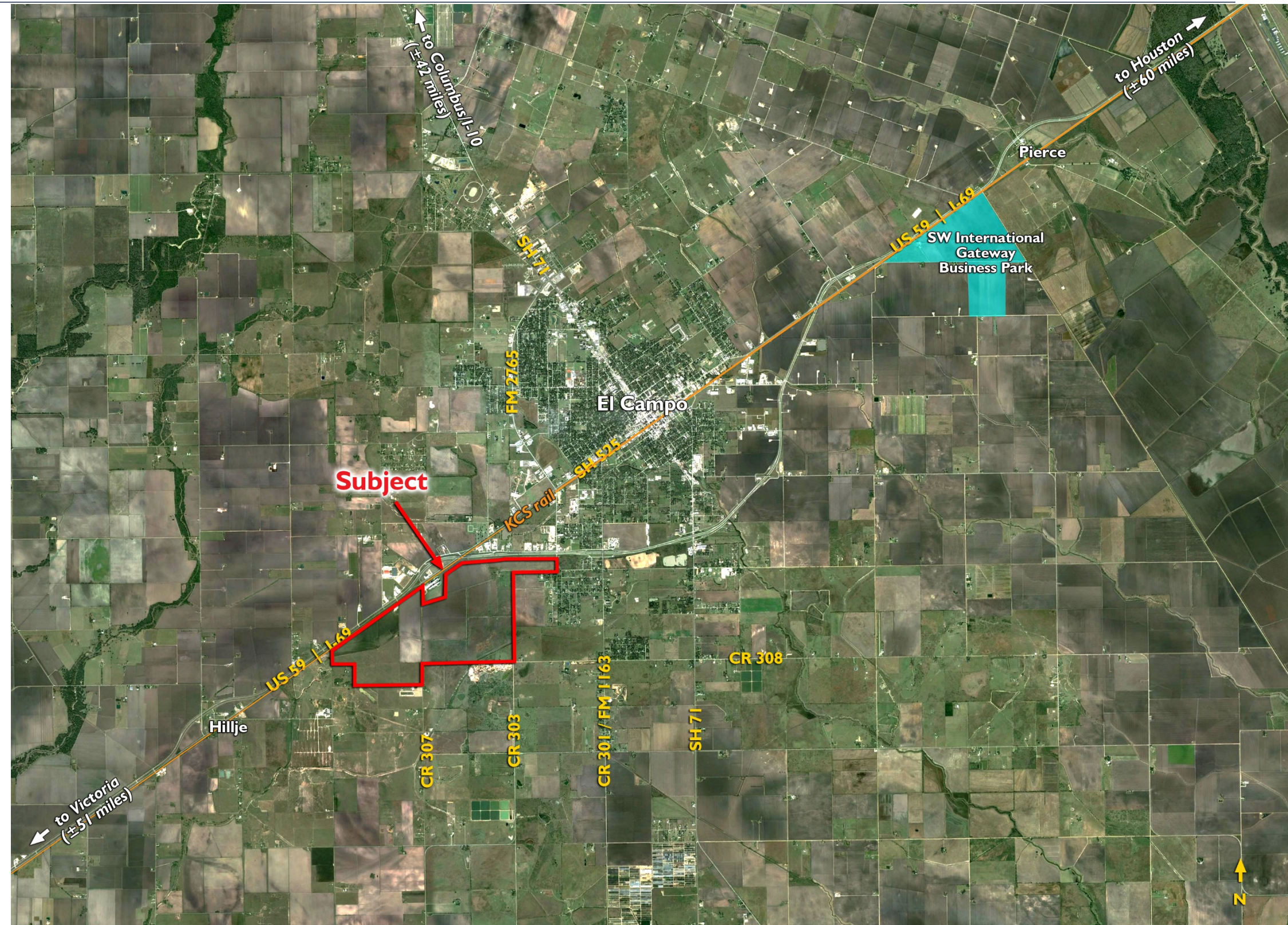
- Tracts A & C: \$15,000/acre
- Tract B: Call broker

## Comments

- Greenfield site – generally level; cleared site in crop production
- Adjacent to I-69 frontage lanes (under construction)

## Incentives

- Discuss with broker



For more information, contact:

**John F. Littman, SIOR** (713) 963 2862 [John.Littman@cushwake.com](mailto:John.Littman@cushwake.com)  
**B. Kelley Parker III, SIOR** (713) 963 2896 [Kelley.Parker@cushwake.com](mailto:Kelley.Parker@cushwake.com)  
**Coe Parker, SIOR** (713) 963 2825 [Coe.Parker@cushwake.com](mailto:Coe.Parker@cushwake.com)

Cushman & Wakefield of Texas, Inc.  
1330 Post Oak Boulevard | Suite 2700  
Houston, TX 77056

[cushmanwakefield.com](http://cushmanwakefield.com)