



Commercial Real Estate Services, Worldwide.

FOR LEASE

The Steam Building Downtown Holyoke, MA



200-218 Race Street - Holyoke, MA

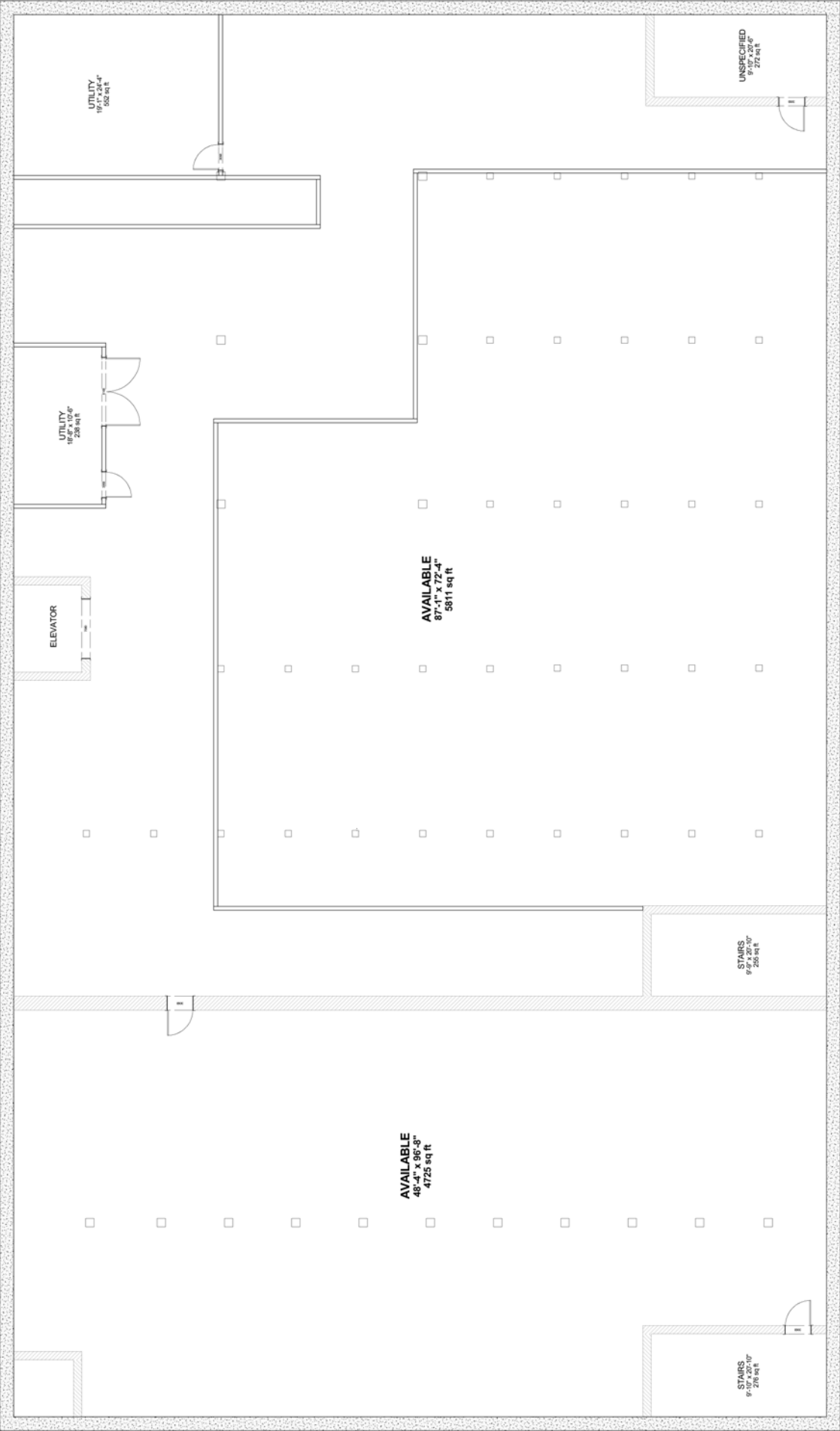
- “Immediately Available”
 - 701 to 10,457 Square Feet of Space
- Totally, Renovated Historic Building
- Building Features Include:
 - New Passenger Elevator
 - Totally Handicapped Accessible
 - New, HVAC System, Life Safety Systems and Lavatories
 - Refinished, Original Wood Floors
 - High, Exposed Wood Ceilings
 - New, Large Windows for Great Lighting
- Located in the Arts/Innovation District
- Within Walking Distance to:
 - New, High Performance Computer Center
 - City Hall
 - New, Amtrak Rail Platform
 - Holyoke Canal Walk
- Ample, On-Site and Street Parking
- Near PVTa Bus Route
- Highway Access:
 - 1.0 Miles to Interstate 391
 - 2.2 Miles to Interstate 91
 - 2.0 Miles to Route 5 (Northampton Street)

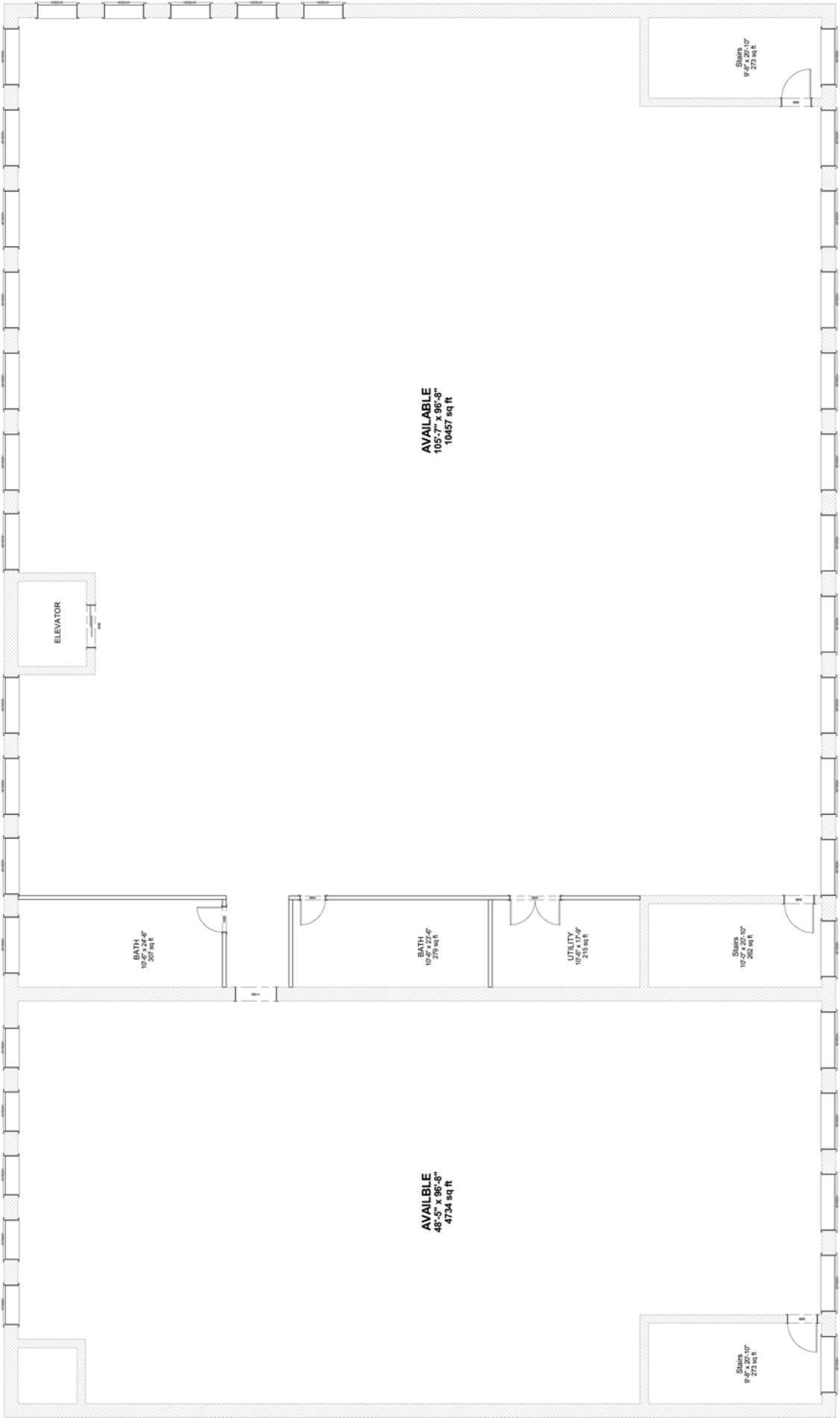


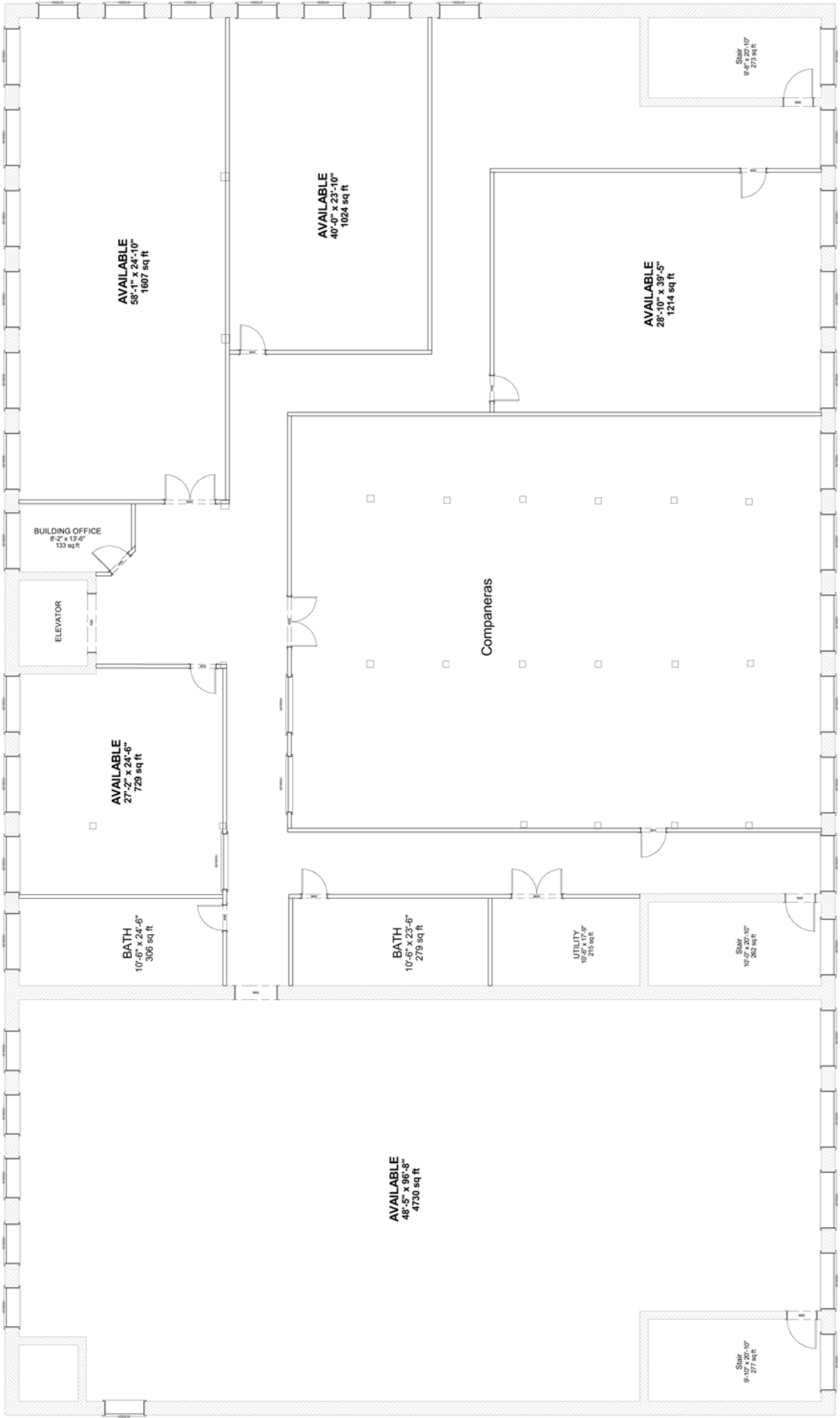
**Broker
Contact**

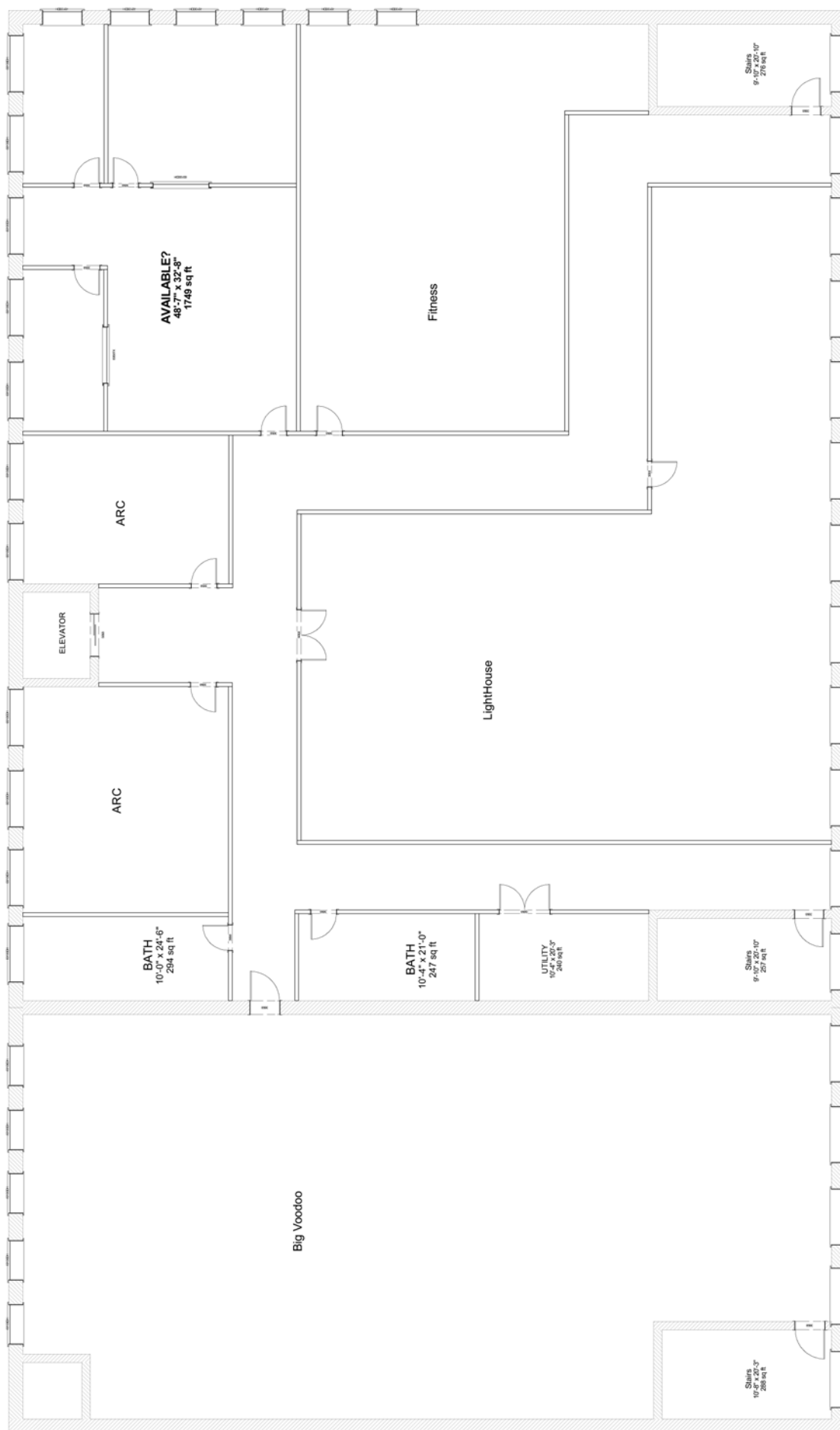
Dan Moore
(413) 200-6017
dmoore@splotkin.com

1350 Main Street, Suite 1410 - Springfield, MA 01103
Tel: (413) 781-8000 Fax: (413) 781-2100
Website: www.sdplotkin.com

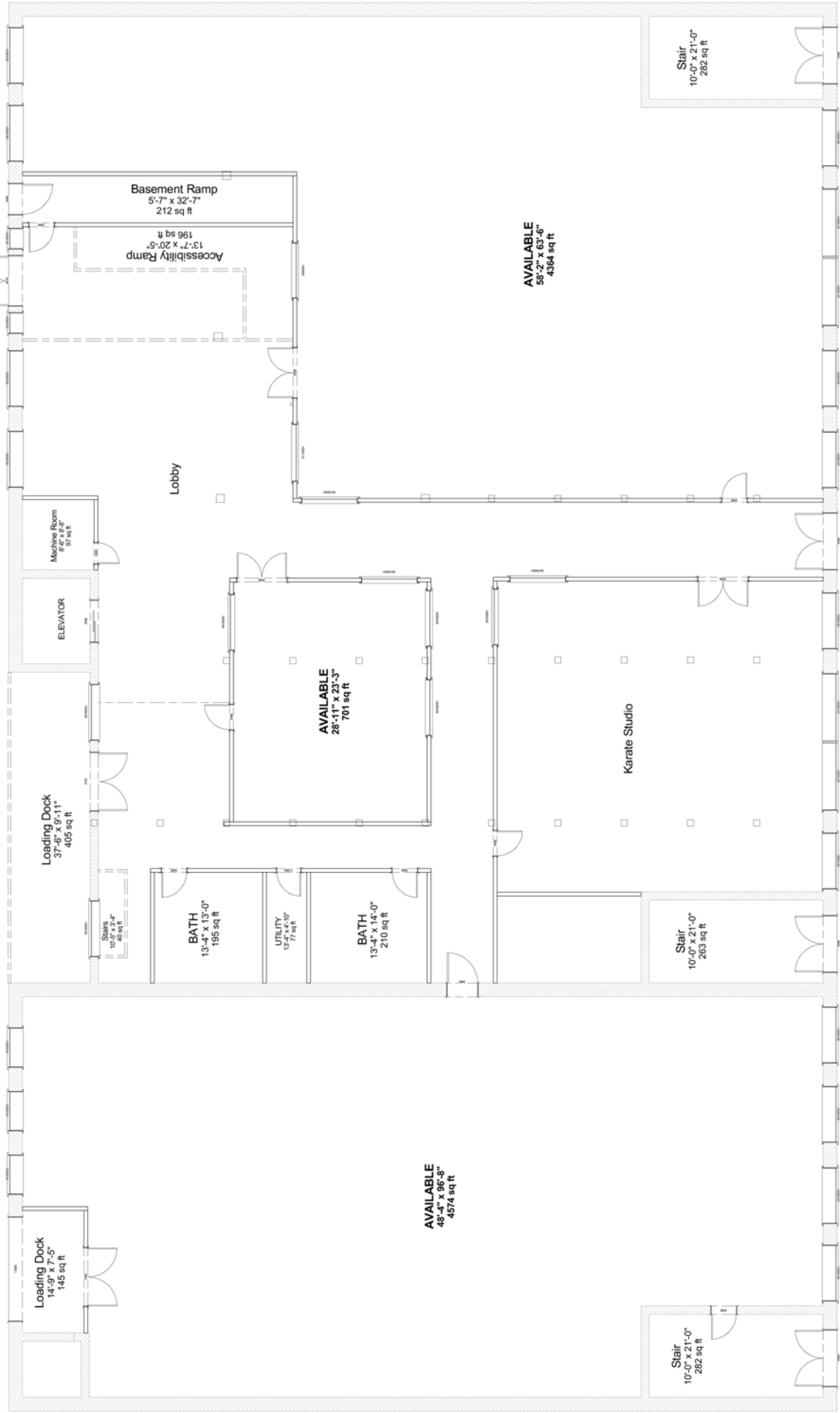








Main Street
Parking Lot Entrance



Race Street
Entrance