

PRIME RETAIL SPACE ADJACENT TO KOHL'S

SPOKANE VALLEY, WA 99037 | 16301 E Broadway Ave | SEQ of Sullivan Rd & I-90 | #1217



- Close proximity to the Spokane Valley Mall
- Strong retail demand with limited availability
- Excellent exposure to I-90 (+/- 75,000 ADT)
- 9 miles east of downtown Spokane

DEMOGRAPHICS:	3 Mile	5 Mile	7 Mile
2017 Population	56,974	106,532	135,770
2017 Daytime Population	31,405	53,388	64,942
2017 Average HH Income	\$65,483	\$73,671	\$78,363
2017 Median HH Income	\$57,167	\$61,460	\$64,258

TRAFFIC COUNTS:
E Broadway Ave: ± 17,000 ADT
Interstate 90: ± 75,000 ADT

AVAILABLE SF:
UP TO 24,100 SF

FRONTAGE:
APPROX. 98 FEET

ZONING:
REGIONAL COMMERCIAL (RC)


RATES:
CALL FOR DETAILS

AREA ANCHORS:



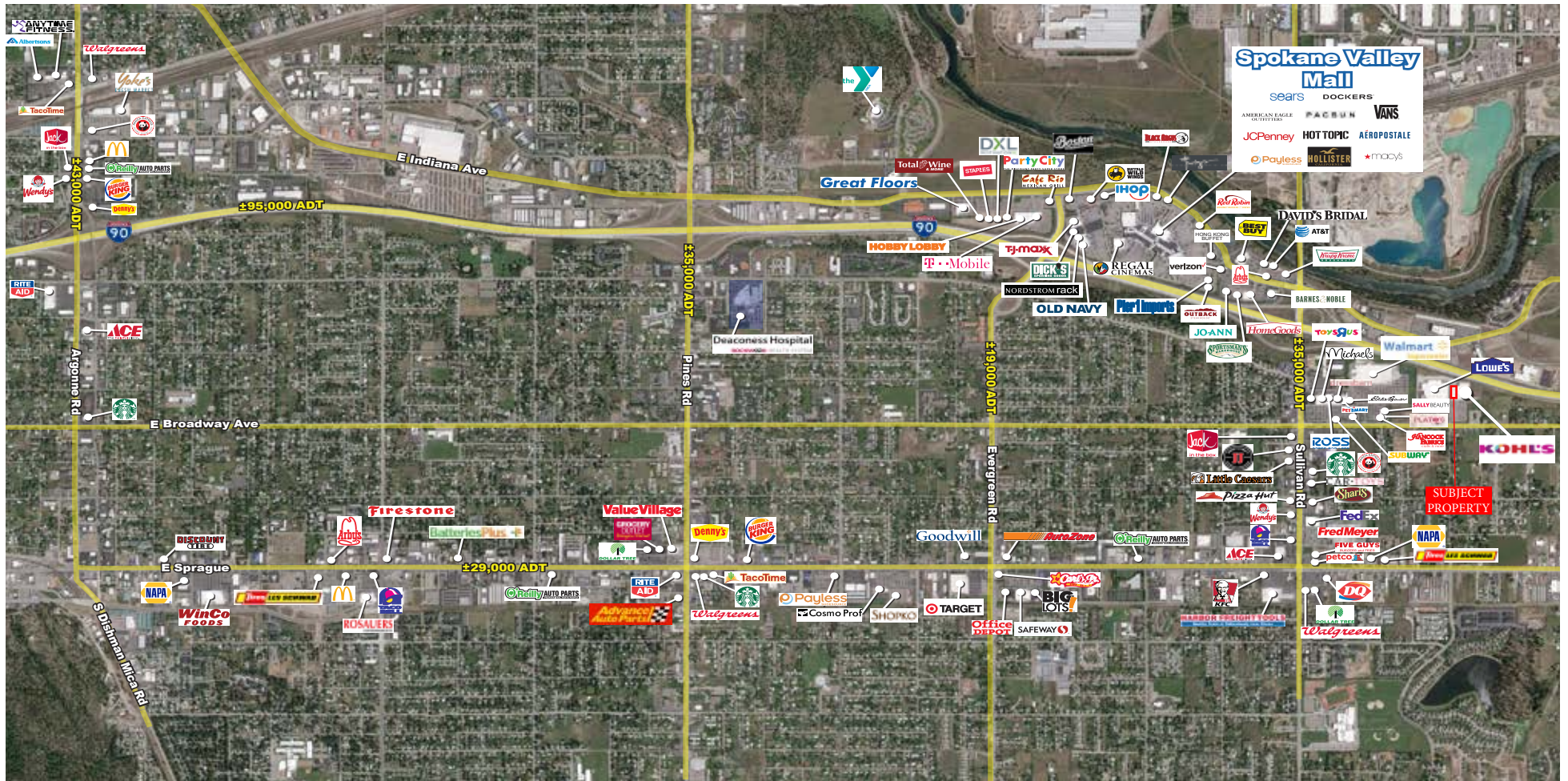
For Information Please Call: 206-641-9500
Matt Hietbrink | matt@mattispart.com

A MEMBER OF
CHAINLINKS
RETAIL ADVISORS

 **Stan Johnson Co.**

PRIME RETAIL SPACE ADJACENT TO KOHL'S

SPOKANE VALLEY, WA 99037 | 16301 E Broadway Ave | SEQ of Sullivan Rd & I-90 | #1217




MATTIS PARTNERS

For Information Please Call: 206-641-9500

Matt Hietbrink | matt@mattispart.com

A MEMBER OF
CHAINLINKS
RETAIL ADVISORS

 **Stan Johnson Co.**

The information contained herein has been obtained from sources believed reliable. While we do not doubt its accuracy, we have not verified it and make no guarantee, warranty or representation about it. It is your responsibility to independently confirm its accuracy and completeness. Any projections, opinions, assumptions or estimates used are for example only, and do not represent the current or future performance of the property. The value of this transaction to you depends on tax and other factors which should be evaluated by your tax, financial and legal advisors. You and your advisors should conduct a careful, independent investigation of the property to determine to your satisfaction the suitability of the property for your needs. Rev. 05/30/18

PRIME RETAIL SPACE ADJACENT TO KOHL'S


SPOKANE VALLEY, WA 99037 | 16301 E Broadway Ave | SEQ of Sullivan Rd & I-90 | #1217



MATTIS PARTNERS

For Information Please Call: 206-641-9500
Matt Hietbrink | matt@mattispart.com

A MEMBER OF
CHAINLINKS
RETAIL ADVISORS

 **Stan Johnson Co.**

The information contained herein has been obtained from sources believed reliable. While we do not doubt its accuracy, we have not verified it and make no guarantee, warranty or representation about it. It is your responsibility to independently confirm its accuracy and completeness. Any projections, opinions, assumptions or estimates used are for example only, and do not represent the current or future performance of the property. The value of this transaction to you depends on tax and other factors which should be evaluated by your tax, financial and legal advisors. You and your advisors should conduct a careful, independent investigation of the property to determine to your satisfaction the suitability of the property for your needs. Rev. 05/30/18

PRIME RETAIL SPACE ADJACENT TO KOHL'S

SPOKANE VALLEY, WA 99037 | 16301 E Broadway Ave | SEQ of Sullivan Rd & I-90 | #1217




MATTIS PARTNERS

For Information Please Call: 206-641-9500

Matt Hietbrink | matt@mattispart.com

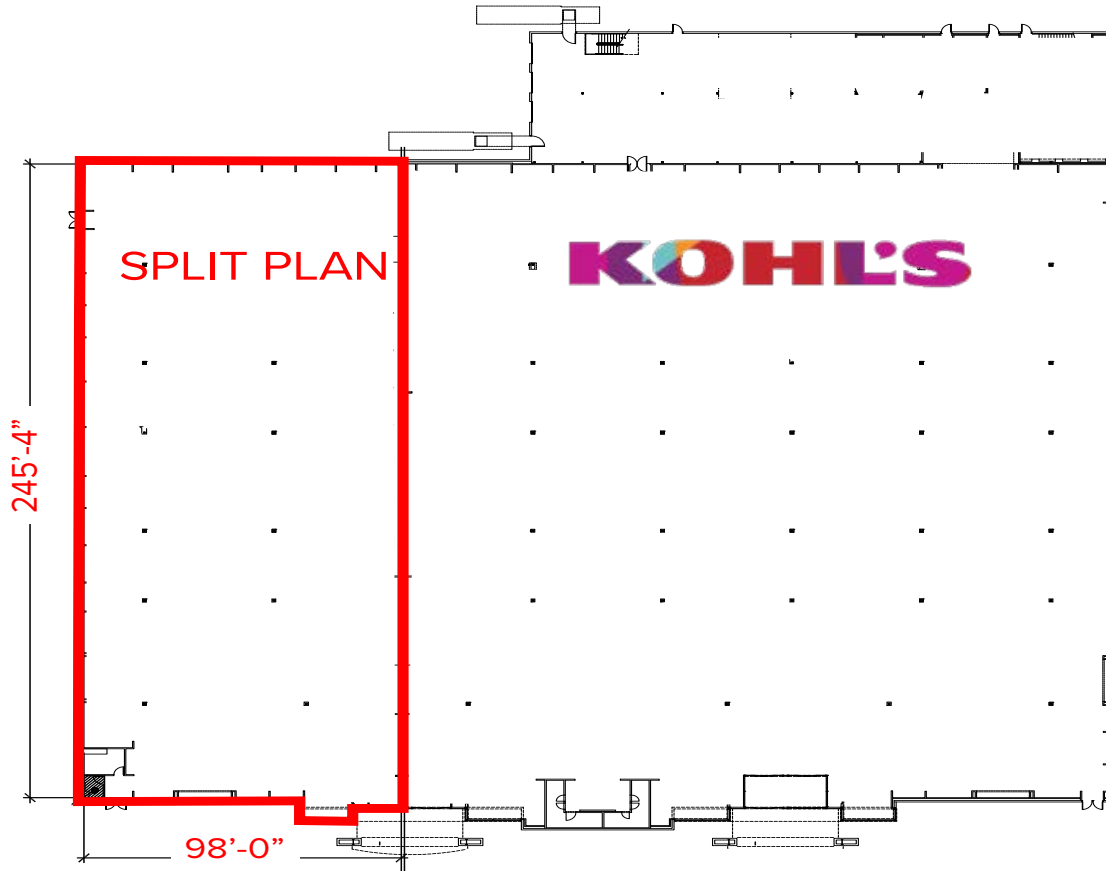
A MEMBER OF
CHAINLINKS
RETAIL ADVISORS

 **Stan Johnson Co.**

The information contained herein has been obtained from sources believed reliable. While we do not doubt its accuracy, we have not verified it and make no guarantee, warranty or representation about it. It is your responsibility to independently confirm its accuracy and completeness. Any projections, opinions, assumptions or estimates used are for example only, and do not represent the current or future performance of the property. The value of this transaction to you depends on tax and other factors which should be evaluated by your tax, financial and legal advisors. You and your advisors should conduct a careful, independent investigation of the property to determine to your satisfaction the suitability of the property for your needs. Rev. 05/30/18

PRIME RETAIL SPACE ADJACENT TO KOHL'S

SPOKANE VALLEY, WA 99037 | 16301 E Broadway Ave | SEQ of Sullivan Rd & I-90 | #1217




MATTIS PARTNERS

For Information Please Call: 206-641-9500

Matt Hietbrink | matt@mattispart.com

A MEMBER OF
CHAINLINKS
RETAIL ADVISORS

 **Stan Johnson Co.**

The information contained herein has been obtained from sources believed reliable. While we do not doubt its accuracy, we have not verified it and make no guarantee, warranty or representation about it. It is your responsibility to independently confirm its accuracy and completeness. Any projections, opinions, assumptions or estimates used are for example only, and do not represent the current or future performance of the property. The value of this transaction to you depends on tax and other factors which should be evaluated by your tax, financial and legal advisors. You and your advisors should conduct a careful, independent investigation of the property to determine to your satisfaction the suitability of the property for your needs. Rev. 05/30/18