



140

METROPOLITAN AVENUE

**WILLIAMSBURG OFFICE SPACE
UP TO 7,600 RSF**

140 Metropolitan Avenue, Williamsburg

Between Wythe Avenue & Berry Street

Available Space - Up to 7,600 SF

Floors 2-5: 1,900 sf Each

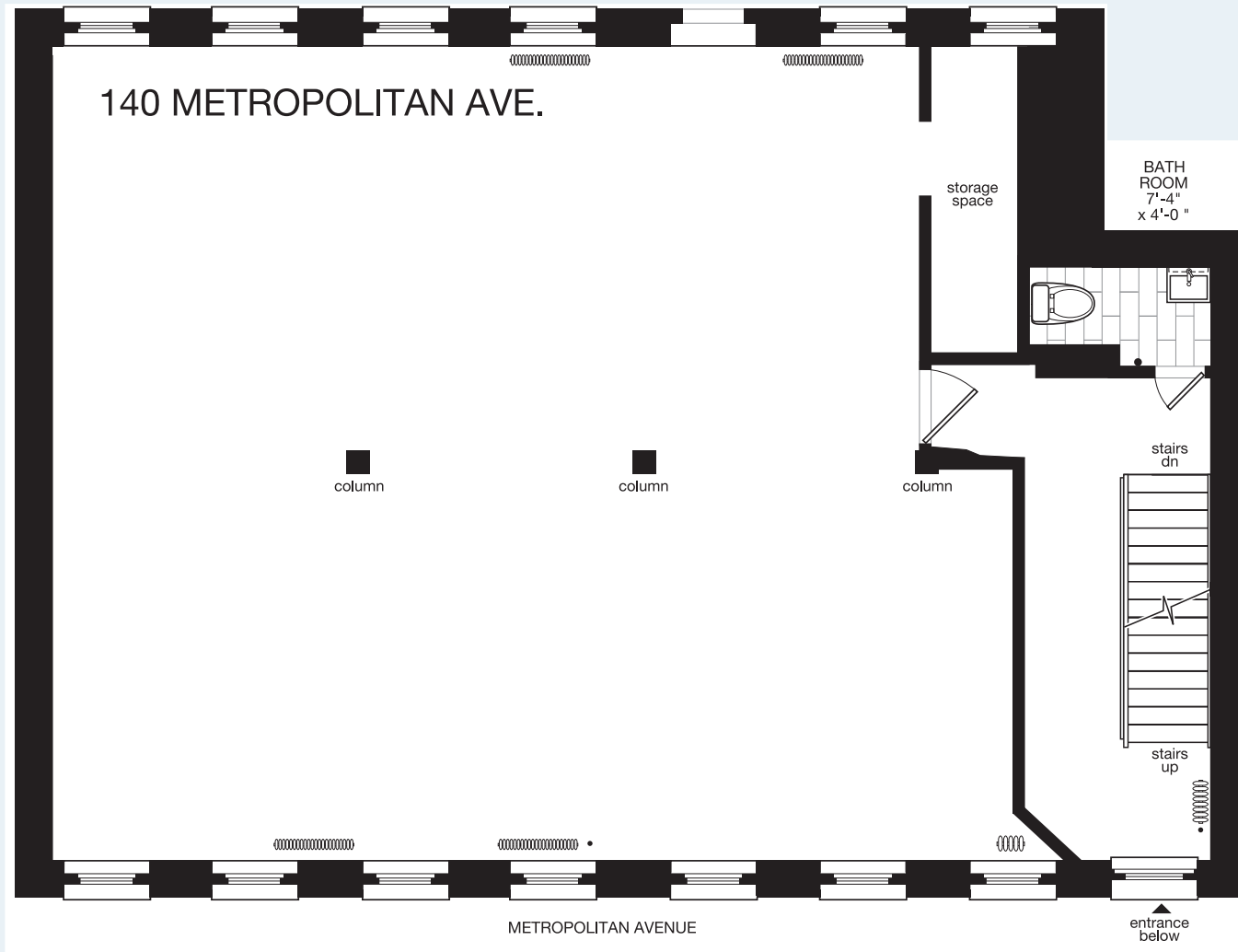
Possession: Immediate

Rent: Upon Request

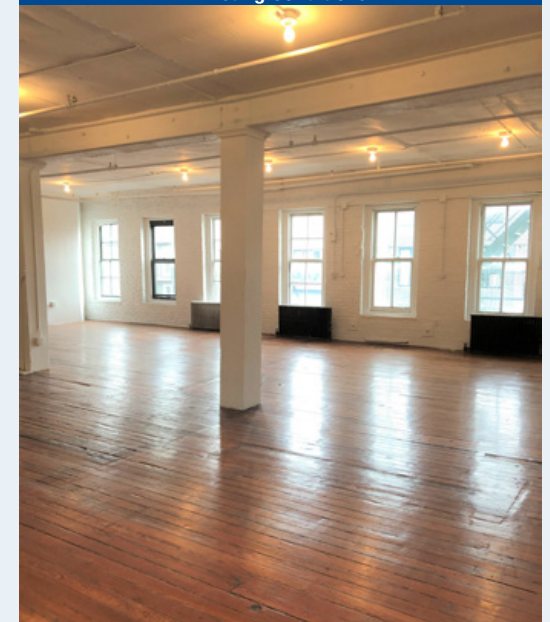
Comments

- All office uses considered
- Close proximity to the Domino Sugar Refinery redevelopment and Williamsburg waterfront
- Vicinity of Williamsburg's numerous eateries, restaurants and Whole Foods Market
- 7 Minute walk to the Bedford Avenue  subway station; and 12 minutes from the  subway at Metropolitan Avenue

Typical Floor Plan



Existing Conditions



Contact Exclusive Broker:

Ben Waller

Licensed Associate Real Estate Broker

212.400.9515

bwaller@absre.com

Scott McAnney

Licensed Real Estate Salesperson

646.839.5745

smcanney@absre.com

