

SOUTH

440

CHURCH

You should *be here.*

A FRESH APPROACH TO YOUR WORK EXPERIENCE,
SURROUNDED BY EVERYTHING THAT MAKES
DOWNTOWN CHARLOTTE THE PLACE TO BE.

440 SOUTH CHURCH STREET CHARLOTTE, NC 28202



Inspire your team at every turn in the middle of downtown's diverse, energetic Third Ward.





THIRD
WARD
/
CLT

- 1 LATTA ARCADE
- 2 ARTS & CULTURAL DISTRICT
- 3 THE KIMPTON
- 4 MERCHANT & TRADE
- 5 HALCYON
- 6 RHINO MARKET & DELI
- 7 JJ'S RED HOTS
- 8 B. GOOD
- 9 HAYMAKER
- 10 DUKE ENERGY CENTER
- 11 ANGELINE'S
- 12 ALLY CHARLOTTE CENTER
- 13 THE WESTIN
- 14 WHOLE FOODS
- MULTI-FAMILY AND RESIDENTIAL

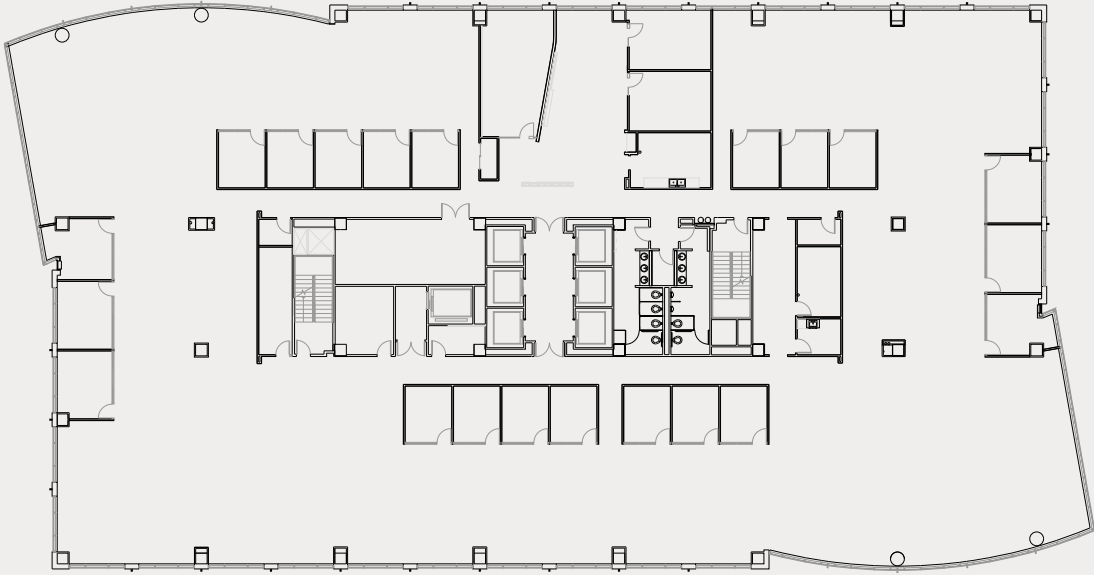
Signage visibility like nothing else in Downtown Charlotte.



440 SOUTH CHURCH STREET CHARLOTTE, NC 28202

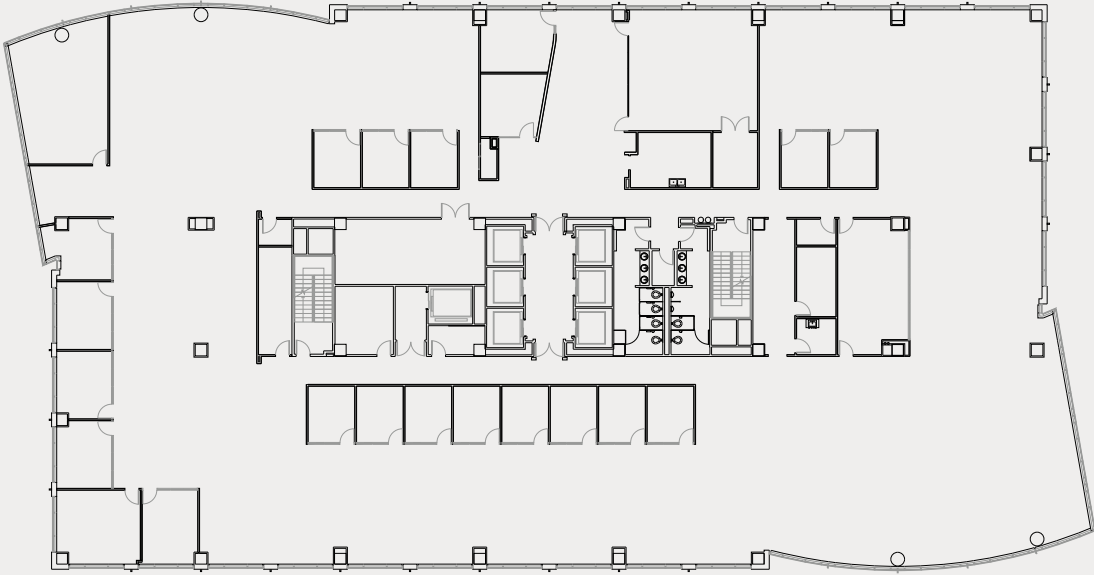
More than 160,000 SF of Class-A office space that's ready when you need it.

14TH FLOOR | 26,753 RSF



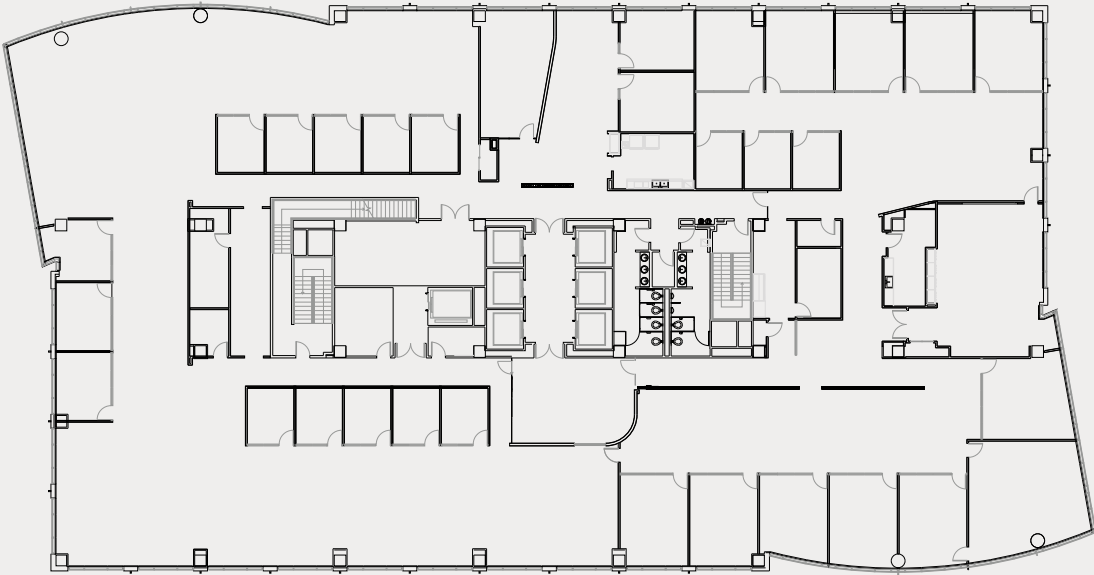
Flexible floorplates let you create the right layout for your workflow, your culture, and your team.

15TH FLOOR | 26,753 RSF

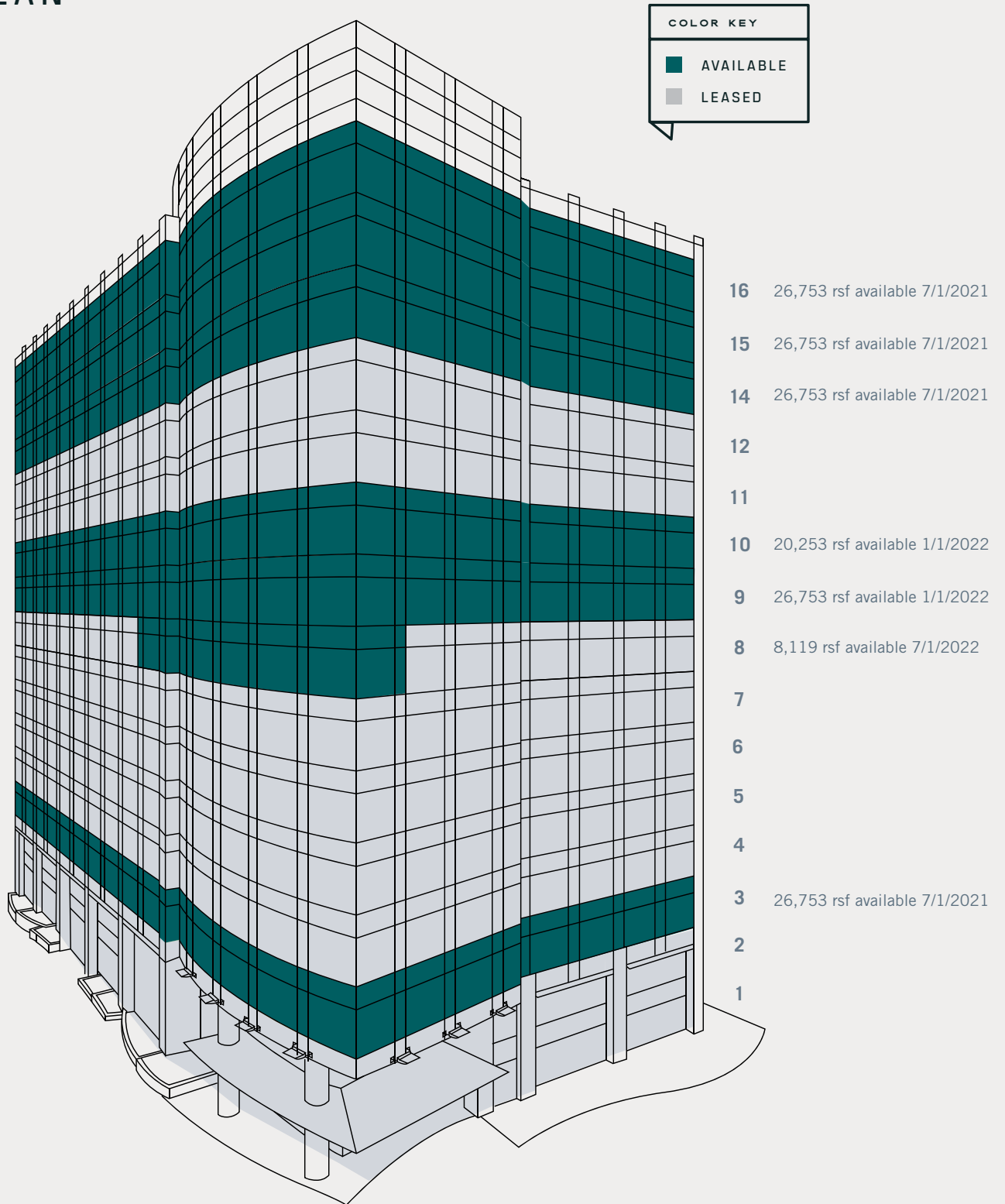


Flexible floorplates let you create the right layout for your workflow, your culture, and your team.

16TH FLOOR | 26,753 RSF



STACKING PLAN



contact

JENNIFER KURZ

JTK@TRINITY-PARTNERS.COM · 704.295.0412

MADDY HOWEY

MHOWEY@TRINITY-PARTNERS.COM · 704.295.0448



440 SOUTH
CHURCH

440 SOUTH CHURCH STREET CHARLOTTE, NC 28202