



FOR LEASE

OMNI Building

909 SOUTH 336TH ST, FEDERAL WAY, WA



Office space

SUITE 200 3,891 SF

SUITE 202 3,202 SF

ON-SITE property management

LOCATED in West Campus

RATE \$20.00 PSF, full service

RESPONSIVE local ownership and management

WILL FRAME

253.722.1412

will.frame@kidder.com

DREW FRAME

253.722.1433

drew.frame@kidder.com

KIDDER.COM

This information supplied herein is from sources we deem reliable. It is provided without any representation, warranty, or guarantee, expressed or implied as to its accuracy. Prospective Buyer or Tenant should conduct an independent investigation and verification of all matters deemed to be material, including, but not limited to, statements of income and expenses. Consult your attorney, accountant, or other professional advisor.

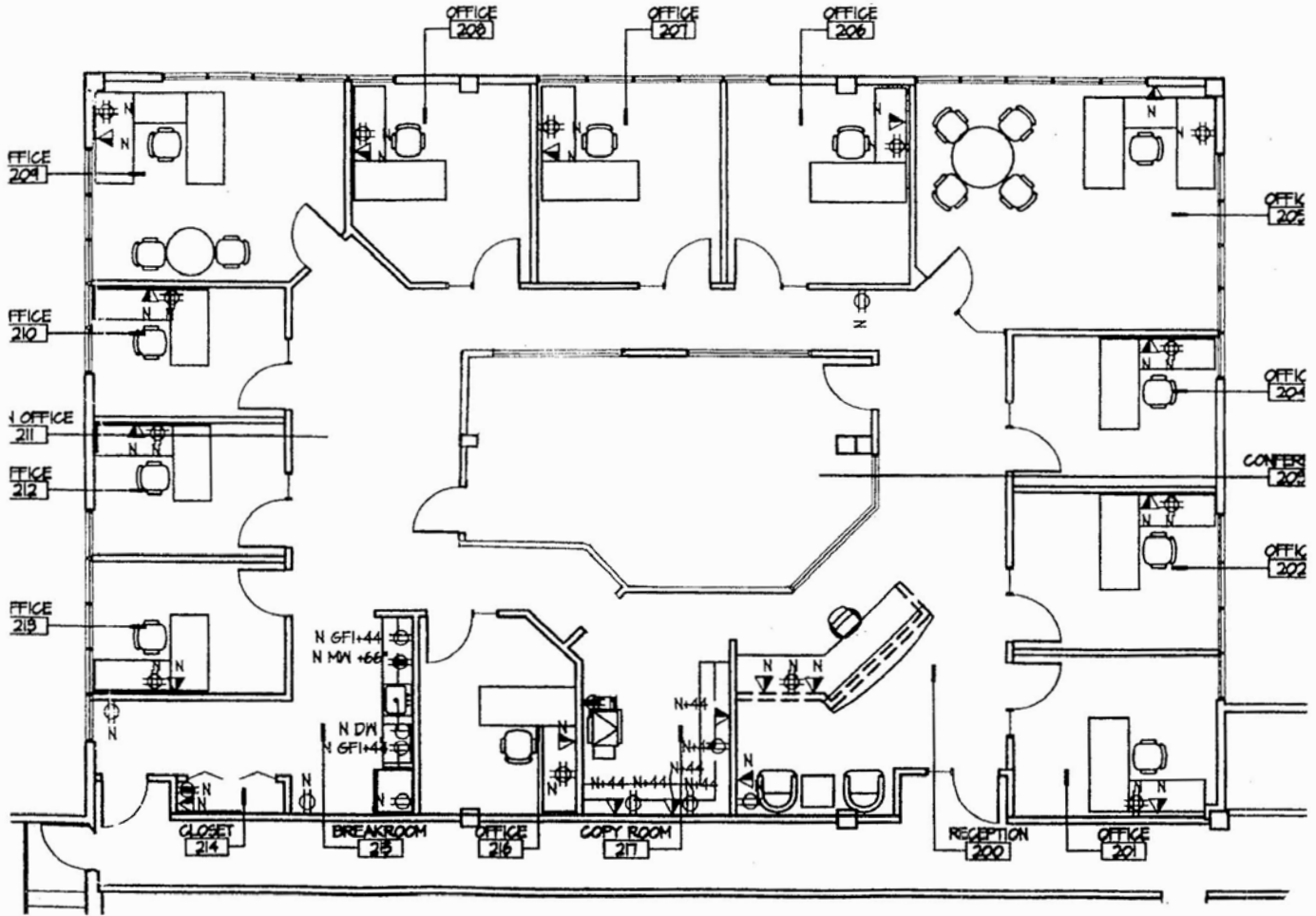
**Kidder
Mathews**

FOR LEASE

OMNI Building

909 SOUTH 336TH ST, FEDERAL WAY, WA

Suite 200 | 3,891 SF



WILL FRAME

253.722.1412

will.frame@kidder.com

DREW FRAME

253.722.1433

drew.frame@kidder.com

KIDDER.COM

This information supplied herein is from sources we deem reliable. It is provided without any representation, warranty, or guarantee, expressed or implied as to its accuracy. Prospective Buyer or Tenant should conduct an independent investigation and verification of all matters deemed to be material, including, but not limited to, statements of income and expenses. Consult your attorney, accountant, or other professional advisor.

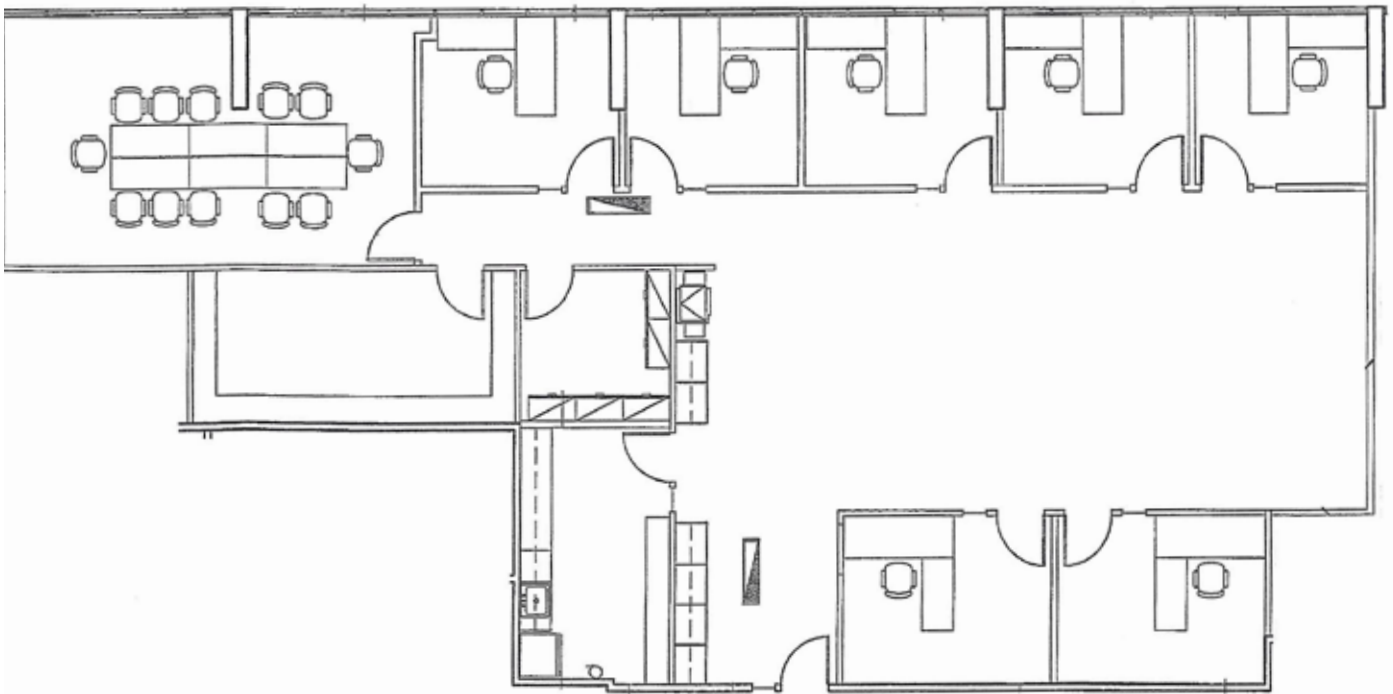


FOR LEASE

OMNI Building

909 SOUTH 336TH ST, FEDERAL WAY, WA

Suite 202 | 3,202 SF



WILL FRAME

253.722.1412

will.frame@kidder.com

DREW FRAME

253.722.1433

drew.frame@kidder.com

KIDDER.COM

This information supplied herein is from sources we deem reliable. It is provided without any representation, warranty, or guarantee, expressed or implied as to its accuracy. Prospective Buyer or Tenant should conduct an independent investigation and verification of all matters deemed to be material, including, but not limited to, statements of income and expenses. Consult your attorney, accountant, or other professional advisor.

