

# FOR LEASE

Howard County, Maryland

# LAKEFRONT 17 BUILDING

5570 STERRETT PLACE | COLUMBIA, MARYLAND 21044

## AVAILABLE

Suite 206: 1,772 sf\*  
Suite 208: 1,299 sf  
Suite 210: 2,047 sf\*  
Suite 300: 880 - 2,778 sf  
Suite 305: 1,068 sf  
\*Contiguous up to 3,819 sf

## BUILDING SIZE

32,358 sf

## PARKING

4/1,000 sf

## RENTAL RATE

Withheld

## HIGHLIGHTS

- ▶ Newly renovated lobby, hallways, and bathrooms
- ▶ Prime location near Columbia Lakefront and across from The Mall in Columbia
- ▶ Easy access to Route 29 and Route 175
- ▶ Plenty of parking



# FOR LEASE

Howard County, Maryland

# BIRDSEYE

LAKEFRONT 17 BUILDING | 5570 STERRETT PLACE | COLUMBIA, MARYLAND 21044



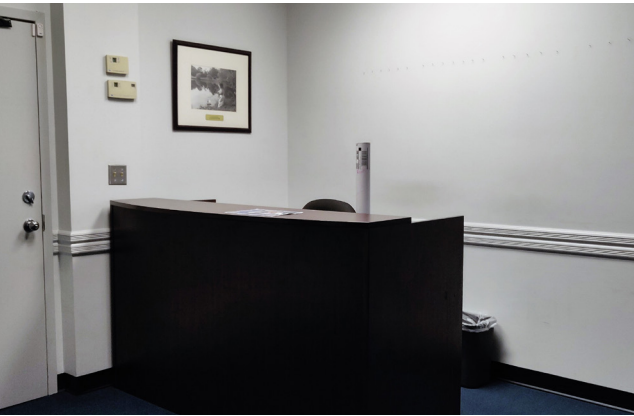
# FOR LEASE



Howard County, Maryland

# INTERIOR PHOTOS

LAKEFRONT 17 BUILDING | 5570 STERRETT PLACE | COLUMBIA, MARYLAND 21044



 **MACKENZIE**  
COMMERCIAL REAL ESTATE SERVICES, LLC

**Bethany Hobbs** | Senior Real Estate Advisor

410.953.0359

bhobbs@mackenziecommercial.com

MacKenzie Commercial Real Estate Services, LLC • 410-974-9336 • 410 Severn Avenue | Annapolis, Maryland 21403 • www.MACKENZIECOMMERCIAL.com

# FOR LEASE



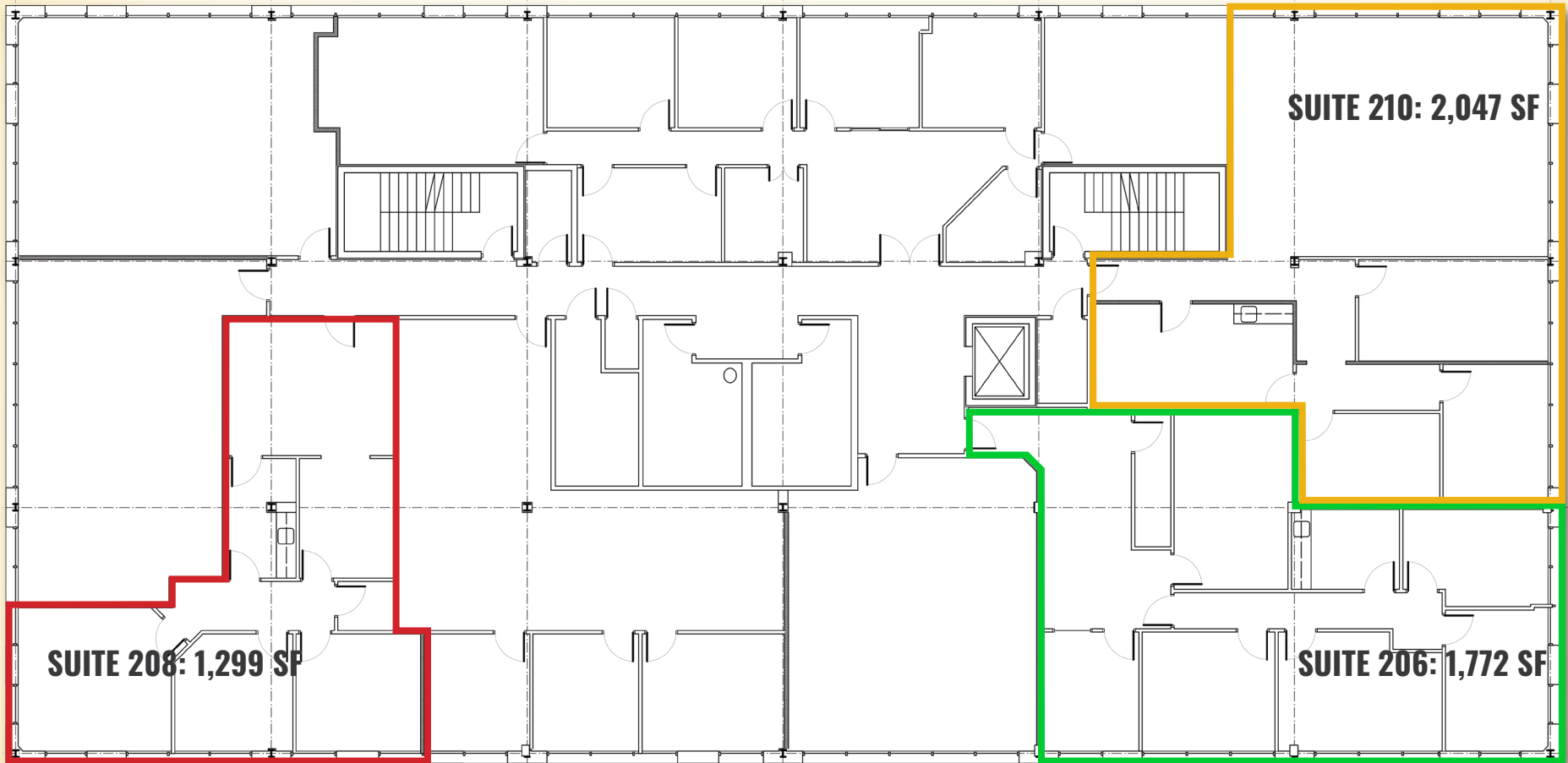
Howard County, Maryland

# FLOOR PLAN

LAKEFRONT 17 BUILDING | 5570 STERRETT PLACE | COLUMBIA, MARYLAND 21044

## SECOND FLOOR

CONTIGUOUS UP TO 3,819 SF



# FOR LEASE

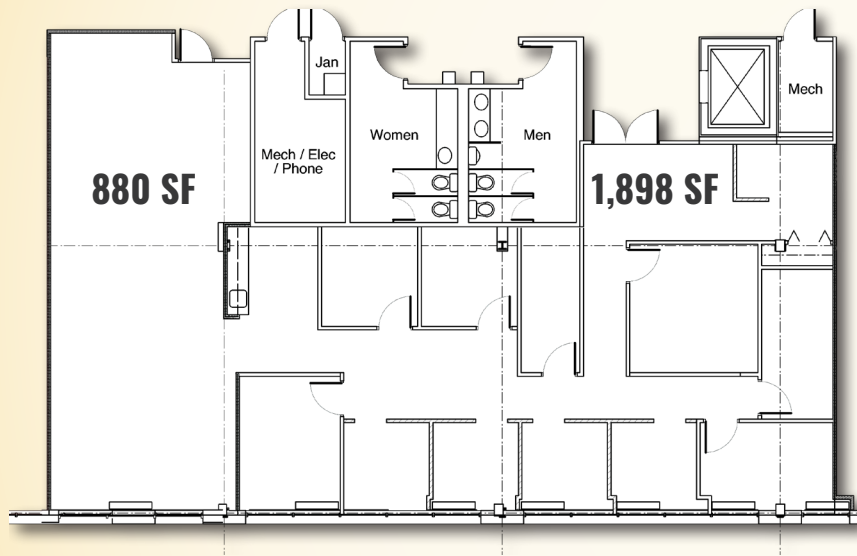


Howard County, Maryland

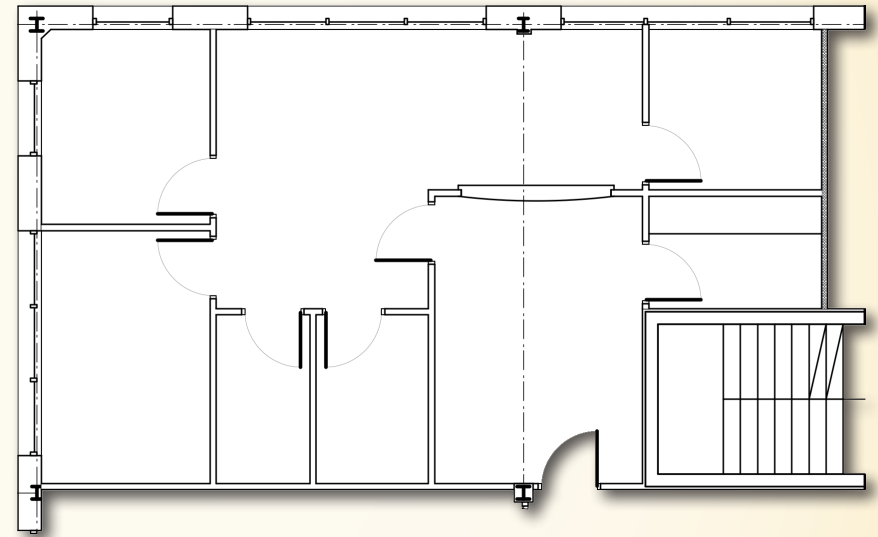
# FLOOR PLAN

LAKEFRONT 17 BUILDING | 5570 STERRETT PLACE | COLUMBIA, MARYLAND 21044

## THIRD FLOOR



**SUITE 300: 880 - 2,778 SF**



**SUITE 305: 1,068 SF**