



MEDICAL OFFICE SPACE

FOR LEASE

Creekside Office Park
1621 Creekside Dr., Suite 100
Folsom, CA 95630



PROPERTY HIGHLIGHTS

- Suite 100 +/- 1,380 SF
- Centrally located in Folsom's Medical District
- Lease Rate \$2.25 RSF MG
- TI budget to be negotiated
- Direct access to Folsom Bike Trail
- Across the street from the Dignity Health Facility

For more information, click [HERE](#)

For more information, please contact:

BOB KUHL

Director

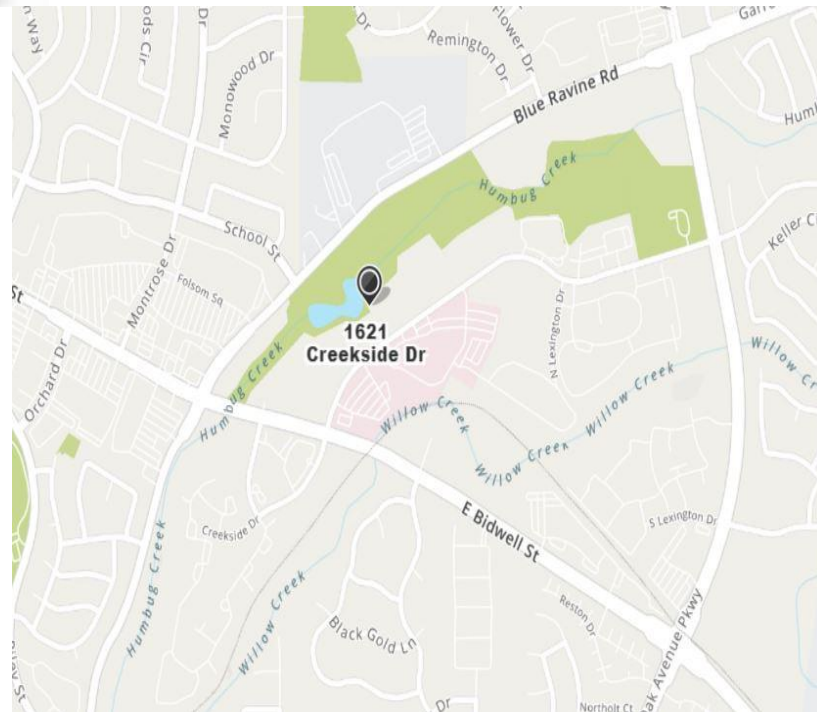
KW Commercial

Cell: 916.947.5060 Office: 916.235.9885

bob@bobkuhl.com

DRE # 606862

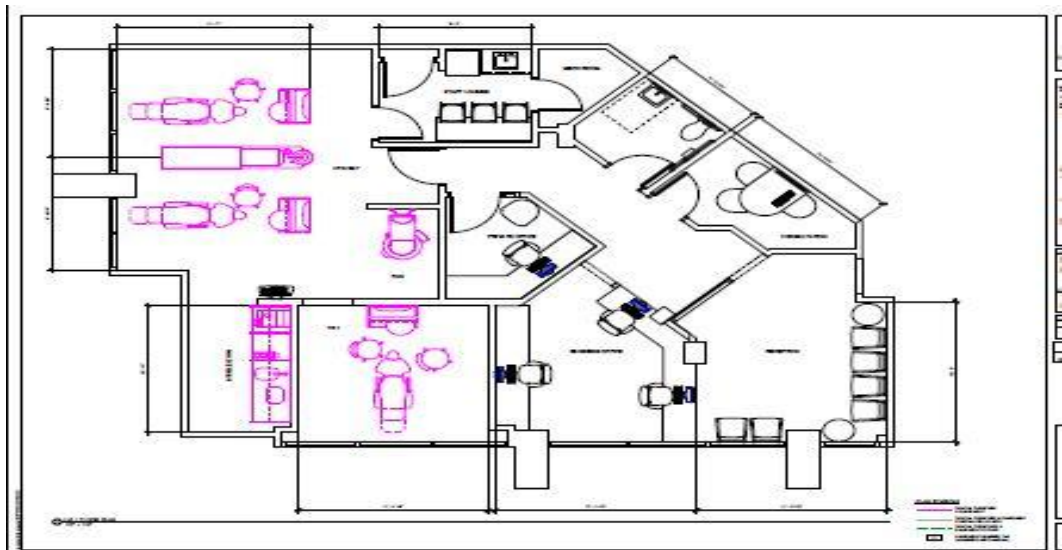
www.bobkuhl.com



KW Commercial | 548 Gibson Drive, Ste 200 | Roseville, CA 95661 | 916.788.8800 | License #1272617

The information contained herein was obtained from third parties, and it has not been independently verified by the real estate brokers. Buyers/tenants should have the experts of their choice inspect the property and information. Real estate brokers are not qualified to act as or select experts with respect to legal, tax, environmental, building construction, soils-drainage or other such matters.

Creekside Office Park
1621 Creekside Dr., Suite 100
Folsom, CA 95630



Available Units	Office SF	Lease Rate / SF
1621 Creekside Dr. Suite 100	+/- 1,380 RSF	\$2.25 MG

For more information,
 please contact:

BOB KUHL
 Director
 Cell: 916.947.5060 Office: 916.235.9885
 bob@bobkuhl.com
 DRE Lic. #606862

www.bobkuhl.com

KW Commercial | 548 Gibson Drive, Ste 200 | Roseville, CA 95661 | 916.788.8800 | License #1272617

The information contained herein was obtained from third parties, and it has not been independently verified by the real estate brokers. Buyers/tenants should have the experts of their choice inspect the property and information. Real estate brokers are not qualified to act as or select experts with respect to legal, tax, environmental, building construction, soils-drainage or other such matters.