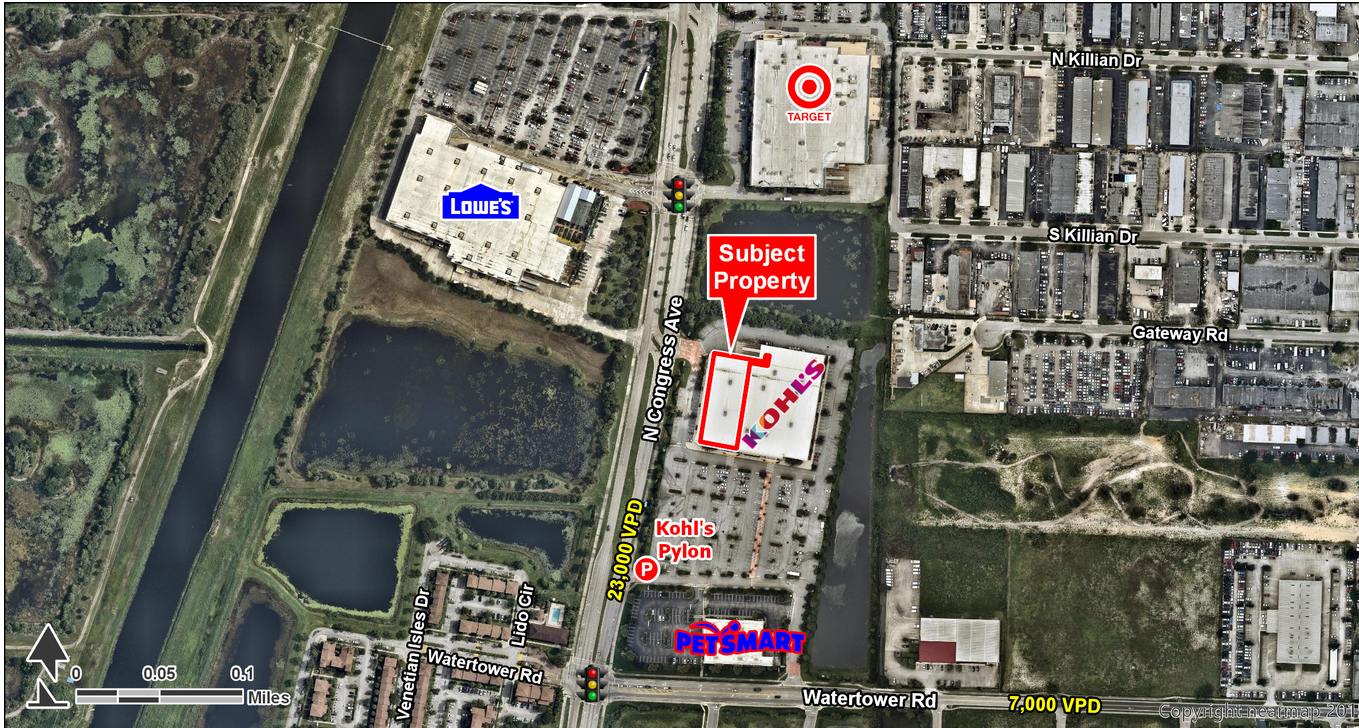


PRIME RETAIL SPACE ADJACENT TO KOHL'S

Lake Park, FL 33403 | 400 North Congress Avenue | N Congress Ave & Watertower Rd | #1287



- Junior anchor space available adjacent to Kohl's
- 245' of direct frontage with exceptional visibility to N Congress Ave
- Located within the heart of North Palm Beach/ South Palm Beach Gardens with significant national co-tenancy within the immediate trade area

DEMOGRAPHICS	1 MILE	3 MILES	5 MILES	TRAFFIC COUNTS	
2018 POPULATION	9,459	82,137	165,572	N Congress Ave	23,000 VPD
2018 DAYTIME POPULATION	15,133	109,762	200,237	Watertower Rd	7,000 VPD
2018 AVERAGE HH INCOME	\$58,270	\$76,063	\$88,658		
2018 MEDIAN HH INCOME	\$45,657	\$51,756	\$56,182		

AVAILABLE SF:
24,800 SF

FRONTAGE:
98' 0"

ZONING:
COMMERCIAL

RATES:
CALL FOR DETAILS

AREA ANCHORS:

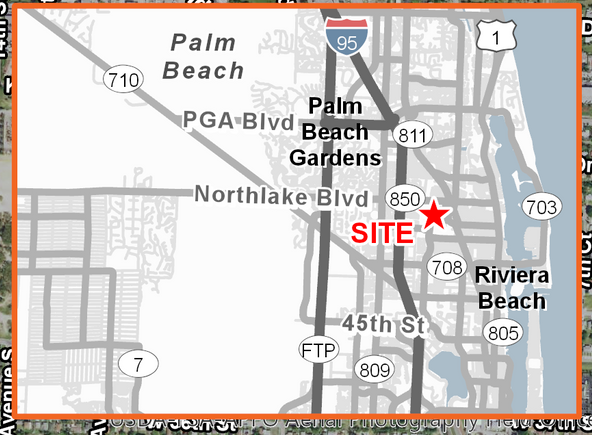


FOR MORE INFORMATION, CONTACT EXCLUSIVE AGENT(S):
MIKE FETHERSTON • mike.fetherston@tscg.com • 305.262.8877



PRIME RETAIL SPACE ADJACENT TO KOHL'S

Lake Park, FL 33403 | 400 North Congress Avenue | N Congress Ave & Watertower Rd | #1287



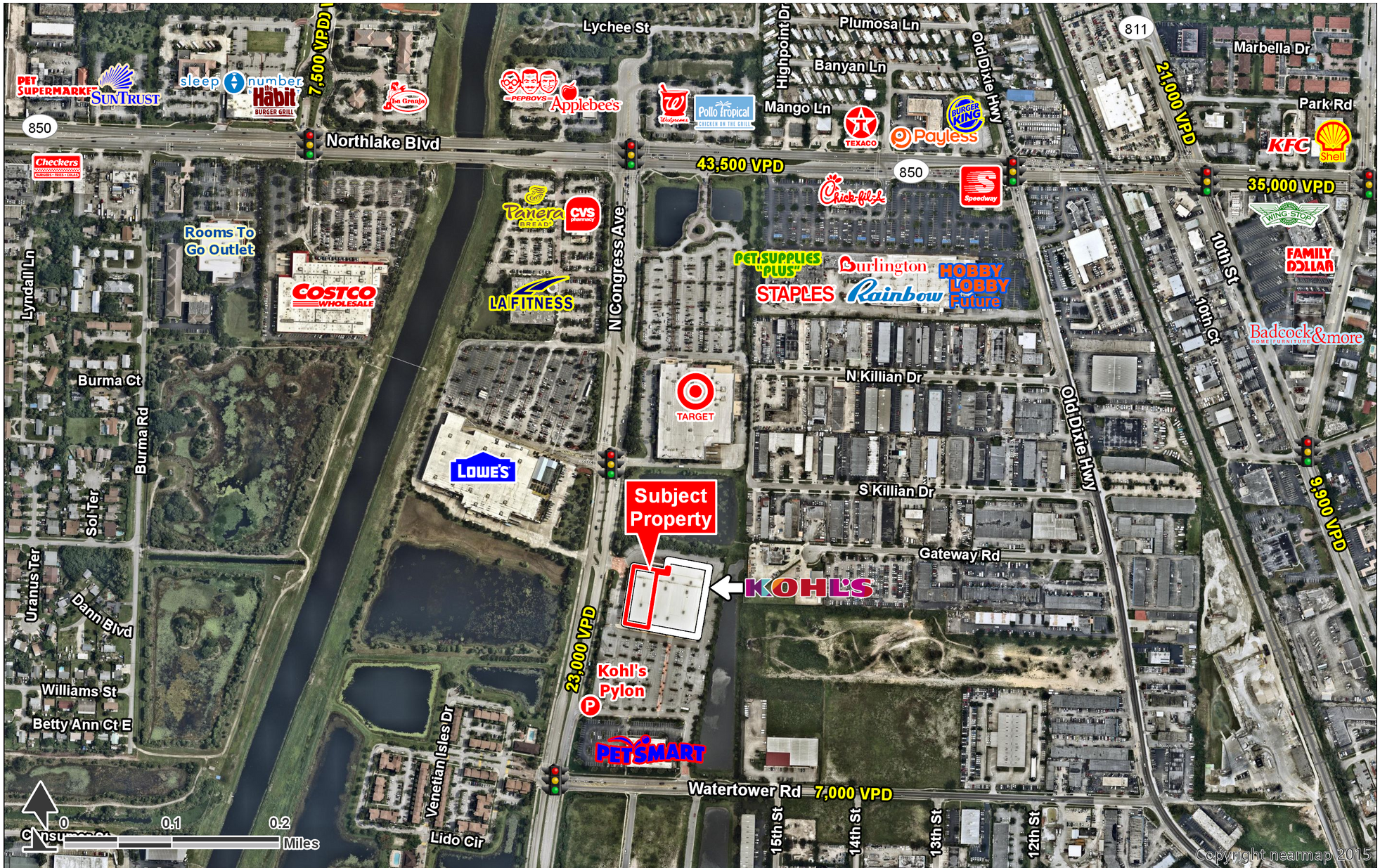
FOR MORE INFORMATION, CONTACT EXCLUSIVE AGENT(S):
 MIKE FETHERSTON • mike.fetherston@tscg.com • 305.262.8877



Demographics: Esri 2018 No warranty expressed or implied has been made as to the accuracy of the information provided herein, no liability assumed for error or omissions.

PRIME RETAIL SPACE ADJACENT TO KOHL'S

Lake Park, FL 33403 | 400 North Congress Avenue | N Congress Ave & Watertower Rd | #1287



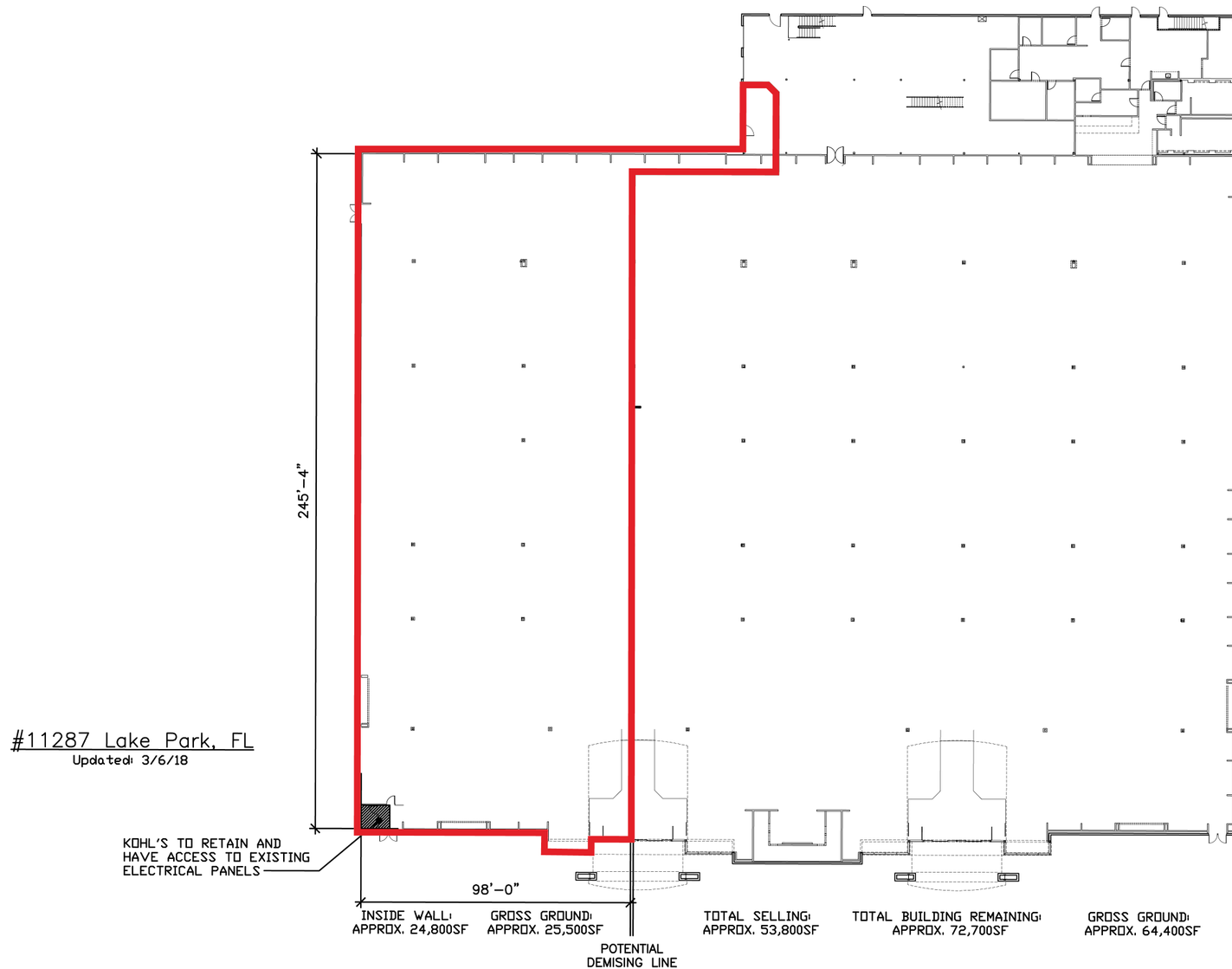
FOR MORE INFORMATION, CONTACT EXCLUSIVE AGENT(S):
 MIKE FETHERSTON • mike.fetherston@tscg.com • 305.262.8877



Demographics: Esri 2018 No warranty expressed or implied has been made as to the accuracy of the information provided herein, no liability assumed for error or omissions.

PRIME RETAIL SPACE ADJACENT TO KOHL'S

Lake Park, FL 33403 | 400 North Congress Avenue | N Congress Ave & Watertower Rd | #1287



FOR MORE INFORMATION, CONTACT EXCLUSIVE AGENT(S):
MIKE FETHERSTON • mike.fetherston@tscg.com • 305.262.8877

