

Commodore Plaza

30 West Mashta Drive, Key Biscayne, FL 33149



Property Information

- Prime Office Space: Private entrance, bathrooms, AC, 24 hour access and ample parking.
- Property is well maintained and in excellent condition.
- Underserved upscale local population.
- Key Biscayne is an island paradise with approximately 22,000 residents during season.
- Over 2 million visitors annually come to Key Biscayne.
- International events & attractions on the Island: ING Marathon, The Miami Seaquarium, Senior PGA Tournament, Cape Florida State Park and Crandon Park.

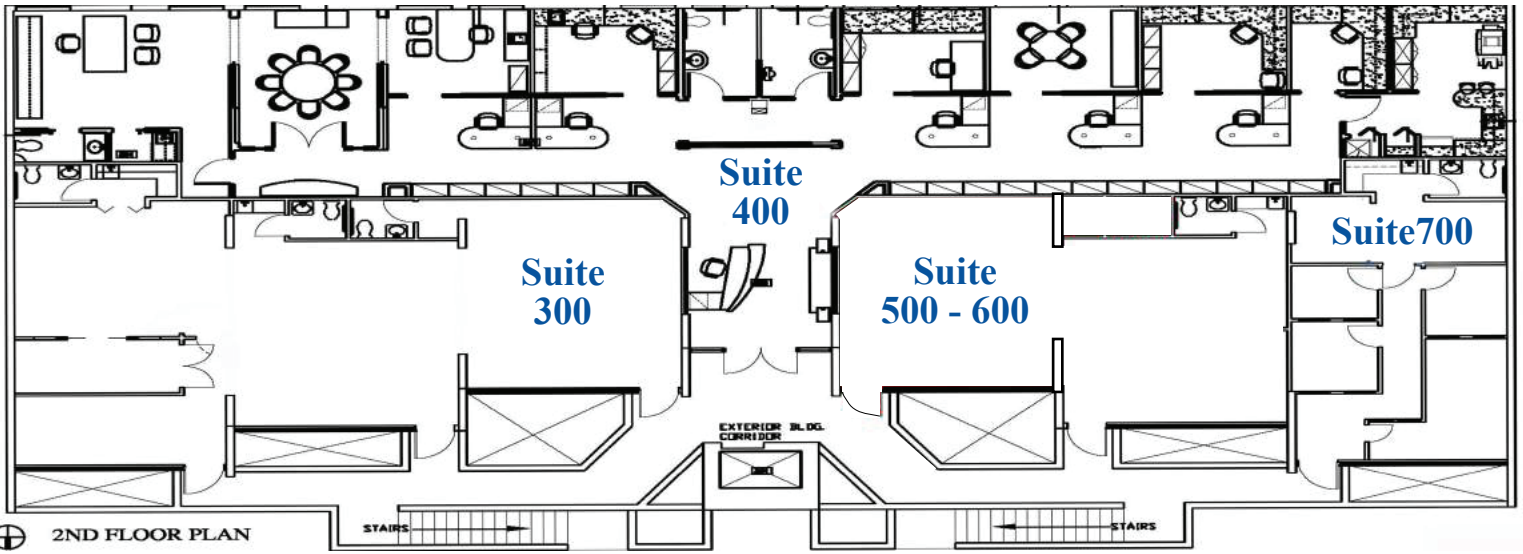
OFFICE SPACE AVAILABLE

Nicole Christodoulou
Senior Leasing Associate
Direct: 305-365-2600x40
Mobile: 786-252-4596

Nicole@CommodoreRealty.com

Commodore Realty, Inc.
30 West Mashta Drive|Suite 400
Key Biscayne, FL 33149
Phone:305.365.2600
Fax:305.365.0800
www.CommodoreRealty.com

Commodore Plaza Site Plan

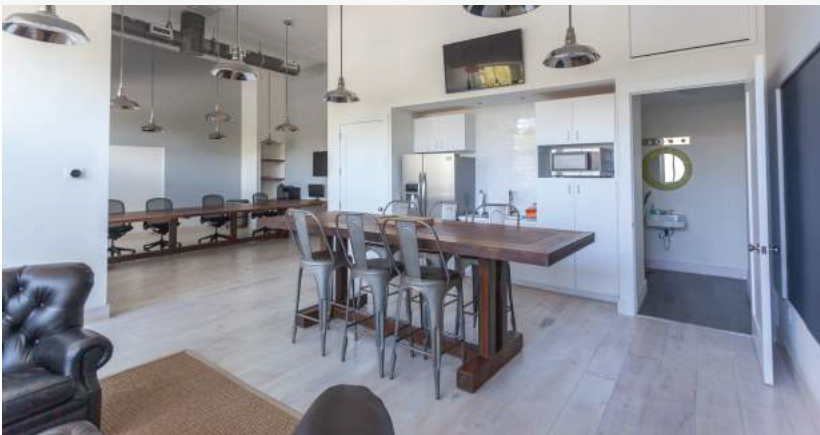


Tenants

Suite	Tenant
300	Elite Medical Alliance- Hamid Rasti
400	Commodore Realty, INC.
500 - 600	Boston Agrex, LLC
700	XCOAL Energy & Resources

Demographics

Population	13,019 (2016)
Median Age	42
Average Household Income	\$193,398



Property Information

Address: 30 West Mashta Drive, Key Biscayne, FL, 33149
 County: Miami-Dade
 Total Square Footage: 6,194
 Number of Tenants: 4
 Parking Spaces: 25