

1,385 - 1,441 SF UNITS AVAILABLE OFFICE & WAREHOUSE SPACES



FOR LEASE

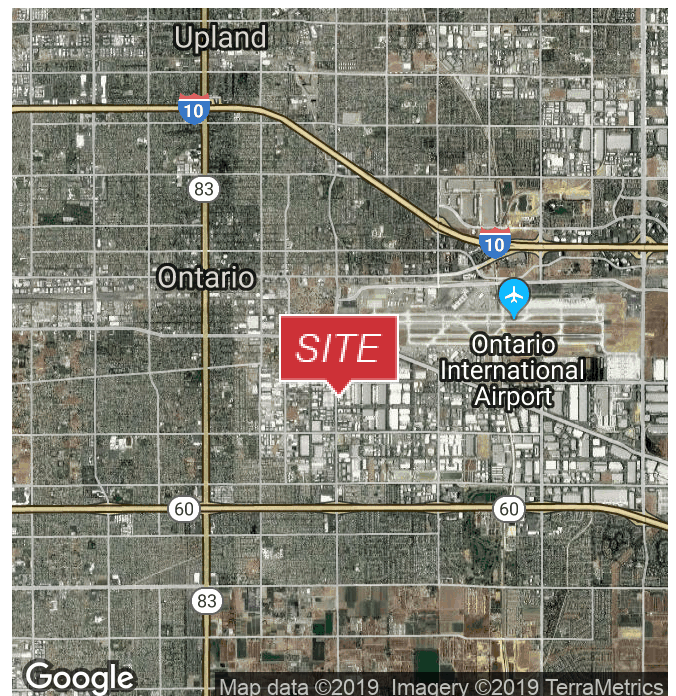


1435 S. & 1525 S. Grove St.

Ontario, California 91761

Property Highlights

- Warehouse Doors 8' x 12' Tall
- 85% Office; 15% Warehouse
- Great Street Visibility
- Ground Level Loading
- Located Near 60 Freeway and Close to Ontario Airport
- 200 AMP, 120/208 V 3 Phase
- Low Wattage Fluorescent Strips in Warehouse (T8)
- 4 Parking Spaces per 1,000 SF



www.naicapital.com

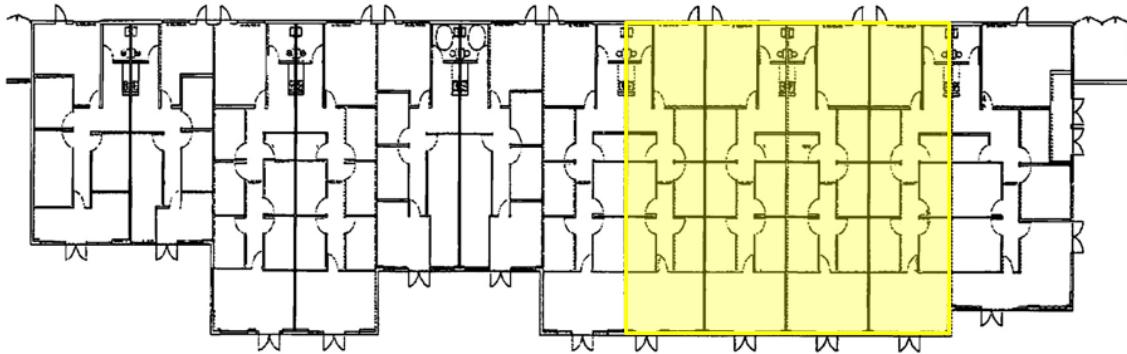
Paul Fisher

Senior Vice President | 949.468.2324
pfisher@naicapital.com | CalDRE #01302114

NO WARRANTY, EXPRESS OR IMPLIED, IS MADE AS TO THE ACCURACY OF THE INFORMATION CONTAINED HEREIN. THIS INFORMATION IS SUBMITTED SUBJECT TO ERRORS, OMISSIONS, CHANGE OF PRICE, RENTAL OR OTHER CONDITIONS, WITHDRAWAL WITHOUT NOTICE, AND IS SUBJECT TO ANY SPECIAL LISTING CONDITIONS IMPOSED BY OUR PRINCIPALS, COOPERATING BROKERS, BUYERS, TENANTS AND OTHER PARTIES WHO RECEIVE THIS DOCUMENT SHOULD NOT RELY ON IT, BUT SHOULD USE IT AS A STARTING POINT OF ANALYSIS, AND SHOULD INDEPENDENTLY CONFIRM THE ACCURACY OF THE INFORMATION CONTAINED HEREIN THROUGH A DUE DILIGENCE REVIEW OF THE BOOKS, RECORDS, FILES AND DOCUMENTS THAT CONSTITUTE RELIABLE SOURCES OF THE INFORMATION DESCRIBED HEREIN. LOGOS ARE FOR IDENTIFICATION PURPOSES ONLY AND MAY BE TRADEMARKS OF THEIR RESPECTIVE COMPANIES. NAI CAPITAL, INC. CA BRE LIC. #01990698.

1,385 - 1,441 SF UNITS AVAILABLE OFFICE & WAREHOUSE SPACES

FOR LEASE



Space #	Space #	Space #	Space #	Space #	Space #	Space #	Space #	Space #	Space #	Space #	Space #
1525-1	1525-2	1525-3	1525-4	1525-5	1525-6	1525-7	1525-8	1525-9	1525-10	1525-11	1525-12
Sq/ft	Sq/ft	Sq/ft	Sq/ft	Sq/ft	Sq/ft	Sq/ft	Sq/ft	Sq/ft	Sq/ft	Sq/ft	Sq/ft
1243	1050	1438	1424	1164	1172	1484	1385	1440	1440	1441	1854

SUITE

SIZE (SF)

LEASE TYPE

LEASE RATE

1525-8 S. Grove St.	1,385 SF	NNN	\$1.00 SF/month
1525-9 S. Grove St.	1,440 SF	NNN	\$1.00 SF/month
1525-10 S. Grove St.	1,440 SF	NNN	\$1.00 SF/month
1525-11 S. Grove St.	1,441 SF	NNN	\$1.00 SF/month



COMMERCIAL REAL ESTATE SERVICES, WORLDWIDE

www.naicapital.com

Paul Fisher

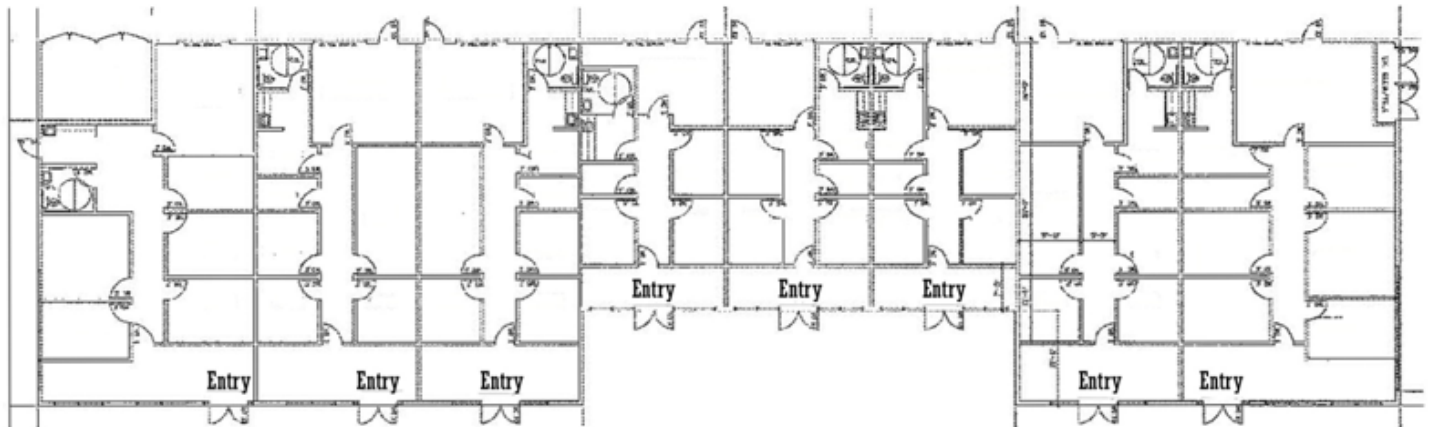
Senior Vice President | 949.468.2324
pfisher@naicapital.com | CalDRE #01302114

NO WARRANTY, EXPRESS OR IMPLIED, IS MADE AS TO THE ACCURACY OF THE INFORMATION CONTAINED HEREIN. THIS INFORMATION IS SUBMITTED SUBJECT TO ERRORS, OMISSIONS, CHANGE OF PRICE, RENTAL OR OTHER CONDITIONS, WITHDRAWAL WITHOUT NOTICE, AND IS SUBJECT TO ANY SPECIAL LISTING CONDITIONS IMPOSED BY OUR PRINCIPALS, COOPERATING BROKERS, BUYERS, TENANTS AND OTHER PARTIES WHO RECEIVE THIS DOCUMENT SHOULD NOT RELY ON IT, BUT SHOULD USE IT AS A STARTING POINT OF ANALYSIS, AND SHOULD INDEPENDENTLY CONFIRM THE ACCURACY OF THE INFORMATION CONTAINED HEREIN THROUGH A DUE DILIGENCE REVIEW OF THE BOOKS, RECORDS, FILES AND DOCUMENTS THAT CONSTITUTE RELIABLE SOURCES OF THE INFORMATION DESCRIBED HEREIN. LOGOS ARE FOR IDENTIFICATION PURPOSES ONLY AND MAY BE TRADEMARKS OF THEIR RESPECTIVE COMPANIES. NAI CAPITAL, INC. CA BRE LIC. #01990696.

1,385 - 1,441 SF UNITS AVAILABLE OFFICE & WAREHOUSE SPACES



FOR LEASE



SPACE NO.	SPACE NO.	SPACE NO.	SPACE NO.	SPACE NO.	SPACE NO.	SPACE NO.	SPACE NO.
1435-1	1435-2	1435-3	1435-4	1435-5	1435-6	1435-7	1435-8
1761 SQ/FT	1478 SQ/FT	1479 SQ/FT	989 SQ/FT	987 SQ/FT	989 SQ/FT	1489 SQ/FT	1995 SQ/FT

1435 S. Grove Street - Site Plan
100% Leased



Paul Fisher
Senior Vice President | 949.468.2324
pfisher@naicapital.com | CalDRE #01302114

www.naicapital.com

NO WARRANTY, EXPRESS OR IMPLIED, IS MADE AS TO THE ACCURACY OF THE INFORMATION CONTAINED HEREIN. THIS INFORMATION IS SUBMITTED SUBJECT TO ERRORS, OMISSIONS, CHANGE OF PRICE, RENTAL OR OTHER CONDITIONS, WITHDRAWAL WITHOUT NOTICE, AND IS SUBJECT TO ANY SPECIAL LISTING CONDITIONS IMPOSED BY OUR PRINCIPALS, COOPERATING BROKERS, BUYERS, TENANTS AND OTHER PARTIES WHO RECEIVE THIS DOCUMENT SHOULD NOT RELY ON IT, BUT SHOULD USE IT AS A STARTING POINT OF ANALYSIS, AND SHOULD INDEPENDENTLY CONFIRM THE ACCURACY OF THE INFORMATION CONTAINED HEREIN THROUGH A DUE DILIGENCE REVIEW OF THE BOOKS, RECORDS, FILES AND DOCUMENTS THAT CONSTITUTE RELIABLE SOURCES OF THE INFORMATION DESCRIBED HEREIN. LOGOS ARE FOR IDENTIFICATION PURPOSES ONLY AND MAY BE TRADEMARKS OF THEIR RESPECTIVE COMPANIES. NAI CAPITAL, INC. CA BRE LIC. #01990696.