

# LOT FOR SALE



HARTUNG AND NOBLIN, INC.

## FOR SALE

### Property Information

**Address:** Highland Oaks Terrace  
Tallahassee, FL 32301

**Lot:** #2  
**Acres:** 0.37

### Features

- Parcel ID: #1133390000020
- Zoned: Commercial Parkway (CP)

### Area

Located just off Capital Circle SE between Park Ave & Apalachee Pkwy.  
Part of Highland Commercial Phase II

## PRICE: \$100,000

CONTACT:

**Chip Hartung**

850-386-6160 o  
850-980-4007 m  
[chiphartung@cbhnmail.com](mailto:chiphartung@cbhnmail.com) email  
[cbhncommercial.com](http://cbhncommercial.com) website

**Steve Allen**

850-386-6160 o  
850-566-5757 m  
[allengroup14@gmail.com](mailto:allengroup14@gmail.com) email  
[cbhncommercial.com](http://cbhncommercial.com) website

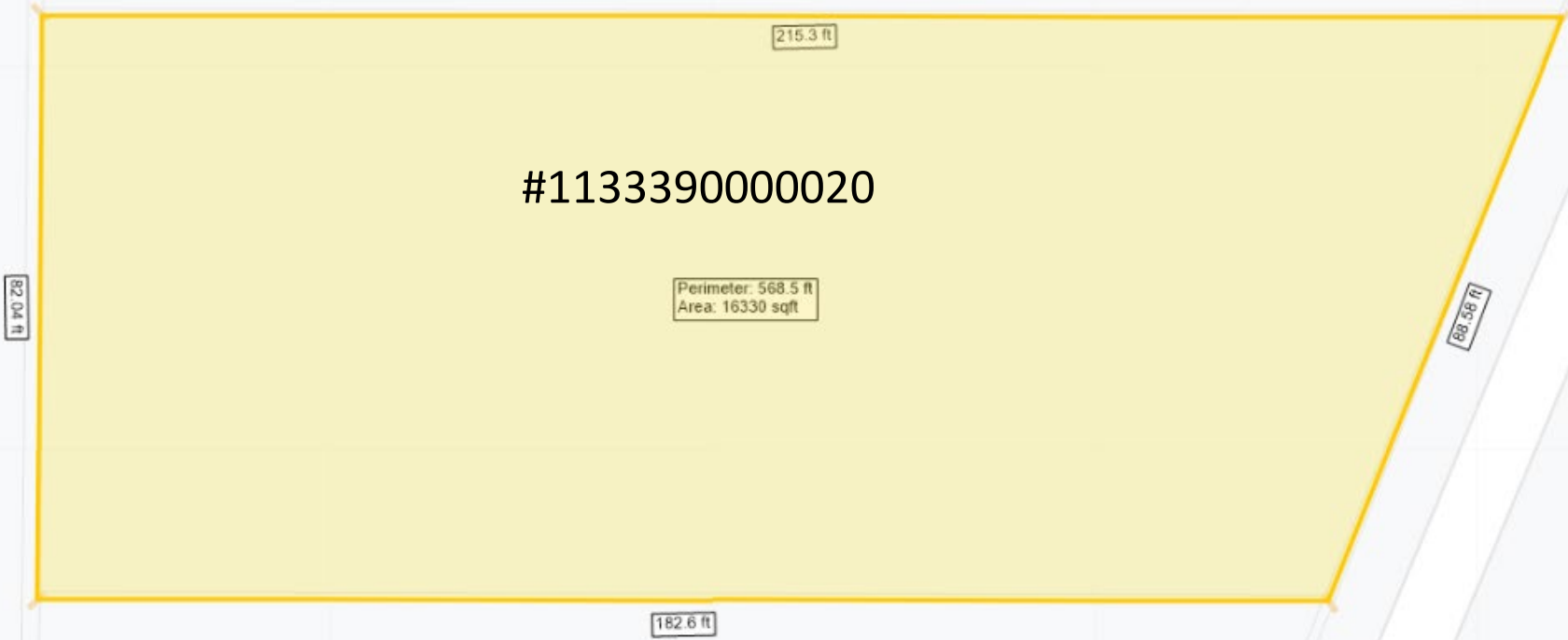


The information shown or contained herein is believed to be accurate but is not warranted or guaranteed, is subject to errors, omissions and changes without notice and should be verified independently.

**CBCWORLDWIDE.COM**

©2019 Coldwell Banker Real Estate LLC, dba Coldwell Banker Commercial Affiliates. All Rights Reserved. Coldwell Banker Real Estate LLC, dba Coldwell Banker Commercial Affiliates fully supports the principles of the Equal Opportunity Act. Each Office is Independently Owned and Operated. Coldwell Banker Commercial and the Coldwell Banker Commercial Logo are registered service marks owned by Coldwell Banker Real Estate LLC, dba Coldwell Banker Commercial Affiliates.

**Coldwell Banker Commercial**  
**HARTUNG AND NOBLIN, INC.**  
3303 Thomasville Rd, Suite #201  
Tallahassee, FL 32308  
850.386.6160





# PROPERTY & LOCATION MAP

