

1700 S. Livernois

1700 S. Livernois, Rochester Hills, MI 48307



Listing ID: 30478191
Status: Active
Property Type: Industrial For Sale
Industrial Type: See Agent
Size: 35,000 SF
Sale Price: See Agent
Sale Terms: Cash to Seller



Overview/Comments

- ? 35,000 SF building on 3+ acres with excess land for sale
- ? Prime 7.35 Acres of Rochester hills property
- ? High power
- ? Free-span building
- ? Nestled between Rochester Rd & Crooks Rd, exits off M-59.
- ? Just 1.5 Miles from Downtown Rochester and M-59

More Information Online

<https://cie.cpix.net//listing/30478191>



QR Code

Scan this image with your mobile device:

General Information

| | | | |
|--------------------|-----------------------------|---------------------------|----------------|
| Tax ID/APN: | 1521477014 | Building/Unit Size (RSF): | 35,000 SF |
| Industrial Type: | Other | Land Area: | 7.35 Acres |
| Property Use Type: | Net Leased Investment (NNN) | Sale Terms: | Cash to Seller |

Area & Location

Property Located Between: Hamlin and S. Livernois

Building Related

Passenger Elevators: 0
Freight Elevators: 0

Location

| | | | |
|----------|----------------------------------------------|------------|-------------------------|
| Address: | 1700 S. Livernois, Rochester Hills, MI 48307 | MSA: | Detroit-Warren-Dearborn |
| County: | Oakland | Submarket: | Rochester |



Property Images



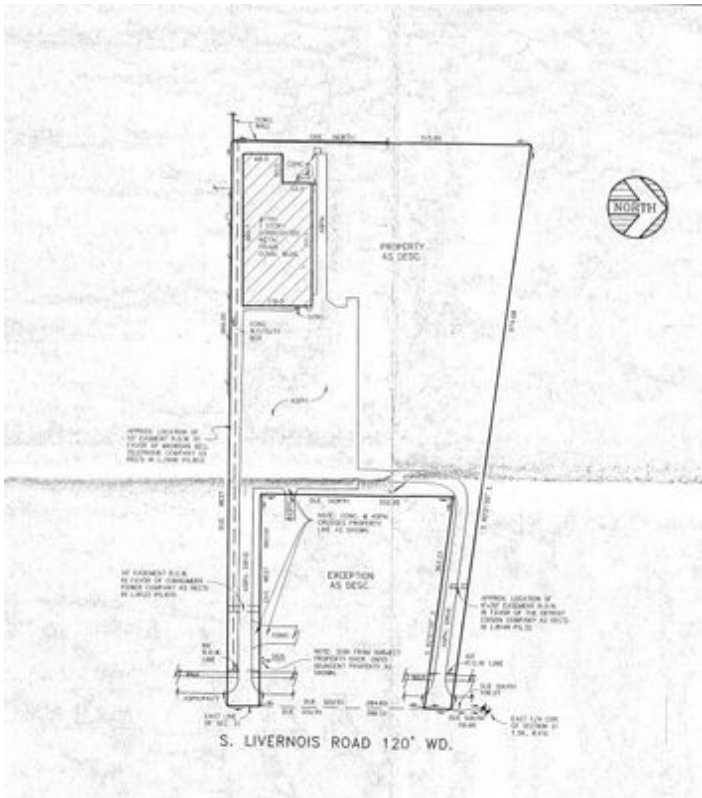
Exterior Photo



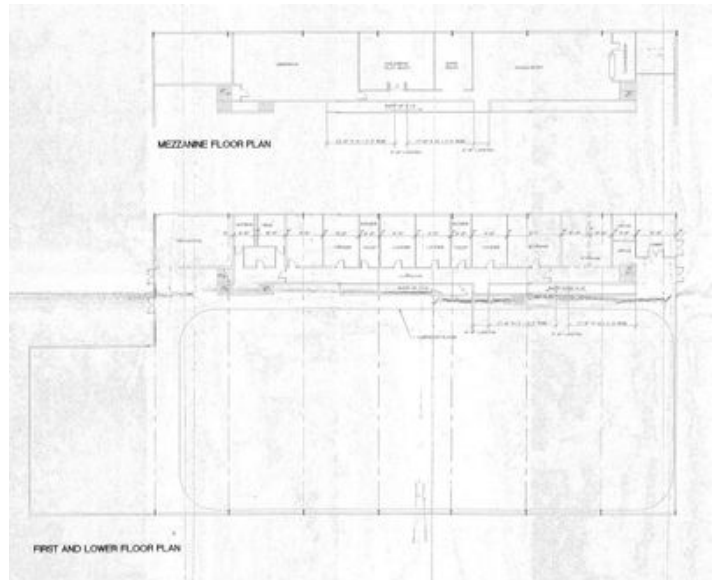
Exterior Photo



Exterior Photo



Survey



Floor Plan



Property Aerial

Property Contacts



Barry Landau

Dominion Real Estate Advisors

248-399-9999 [0]

blandau@dominionra.com