

FOR SUBLEASE

PLAZA 220 BUILDING

21907 64th Ave West, Mountlake Terrace, WA

SUITE 360

- » 1,257 SF
- » 4 offices and open area
- » 4 parking stalls

FEATURES

- » 3rd floor location with westerly views
- » Excellent freeway access to I-5
- » Sublease expires April 30, 2021

LEASE RATES:

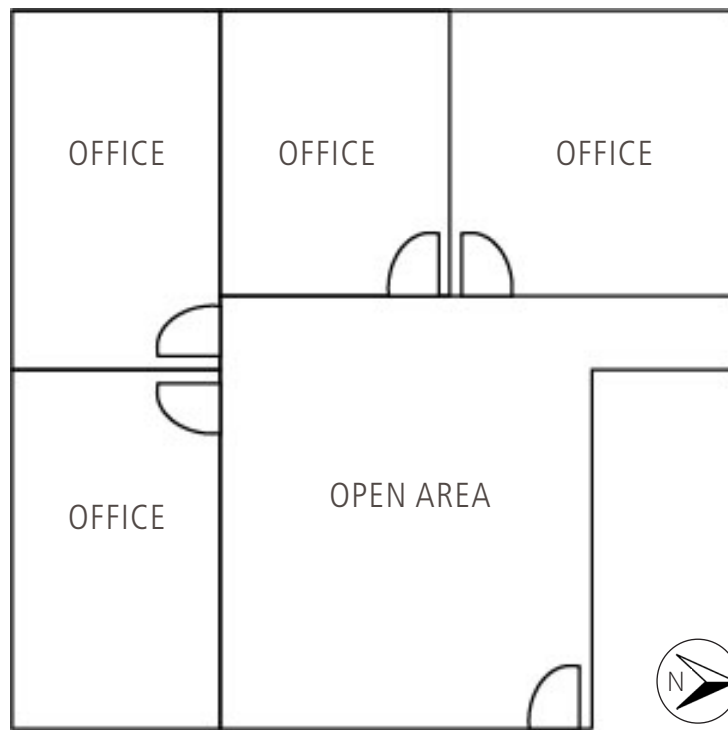
- » \$2,410 per month
- » Full service gross



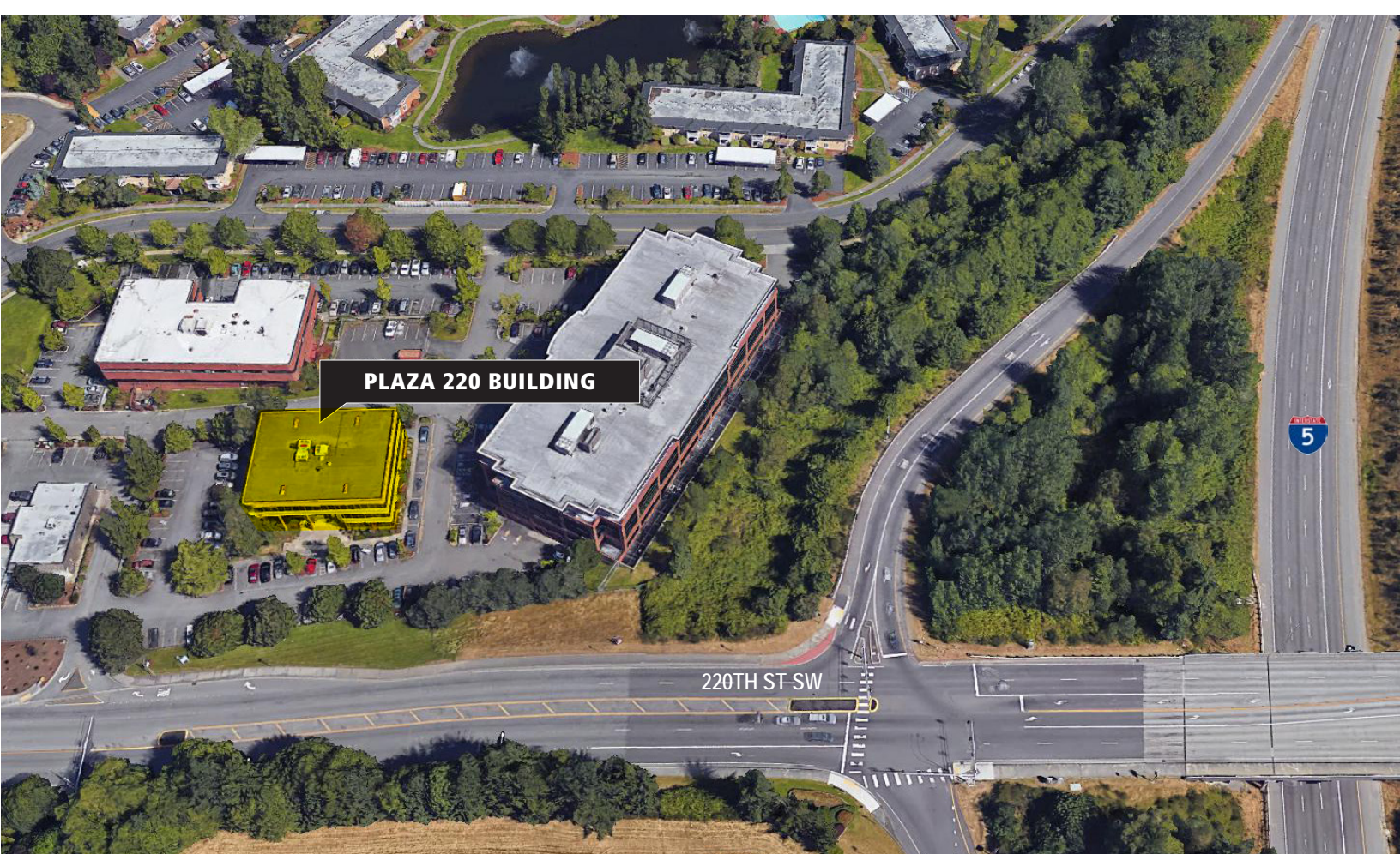
OFFERED EXCLUSIVELY BY:



BRENT JACKSON
+ 1 425 974 4015
brent.jackson@am.jll.com



FLOOR PLAN | SUITE 360 | 1,257 SF



OFFERED EXCLUSIVELY BY:

www.jll.com/seattle



BRENT JACKSON

+ 1 425 974 4015

brent.jackson@am.jll.com