

SWC RECKER ROAD & OCOTILLO ROAD

EXCLUSIVE LISTING | MARICOPA COUNTY, ARIZONA



LOCATION Property is located at the southwest corner of Recker Road and Ocotillo Road in Maricopa County, Arizona

SIZE ±10.69 acres

PRICE Submit

ZONING RU-43

GENERAL PLAN Residential 0-1 du/ac, Town of Gilbert

SCHOOLS Chandler Unified School District

COMMENTS

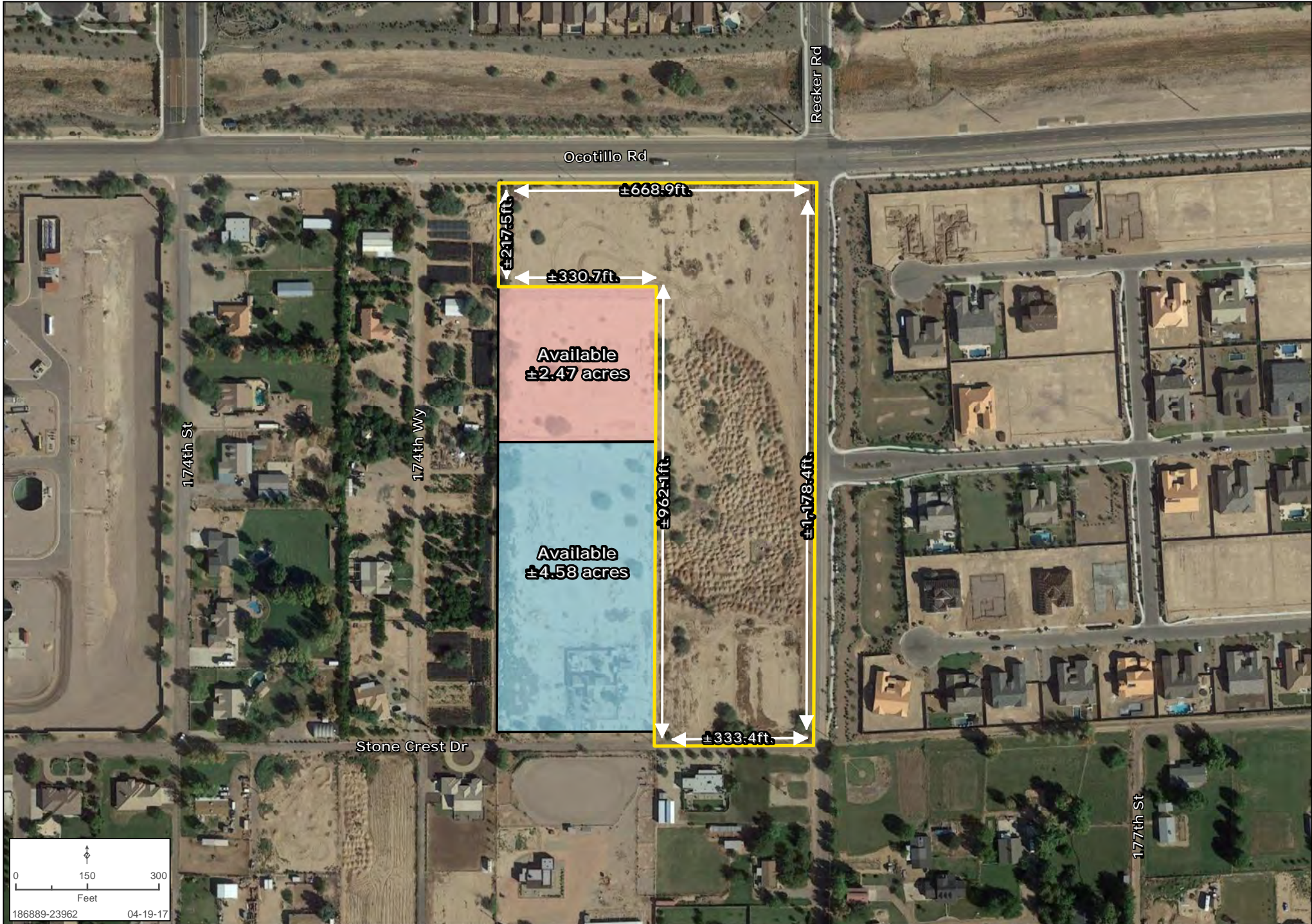
- Seller to allow time for rezone and entitlements
- Potential for assemblage up to ±17.75 acres

Bret Rinehart | brinehart@landadvisors.com **Ryan Semro** | rsemro@landadvisors.com **Ben Heglie** | bheglie@landadvisors.com
 4900 North Scottsdale Road, Suite 3000, Scottsdale, Arizona 85251 ph. 480.483.8100 | www.landadvisors.com

The information contained herein is from sources deemed reliable. We have no reason to doubt its accuracy but do not guarantee it. It is the responsibility of the person reviewing this information to independently verify it. This package is subject to change, prior sale or complete withdrawal. AZMaricopa186889-5.12.17

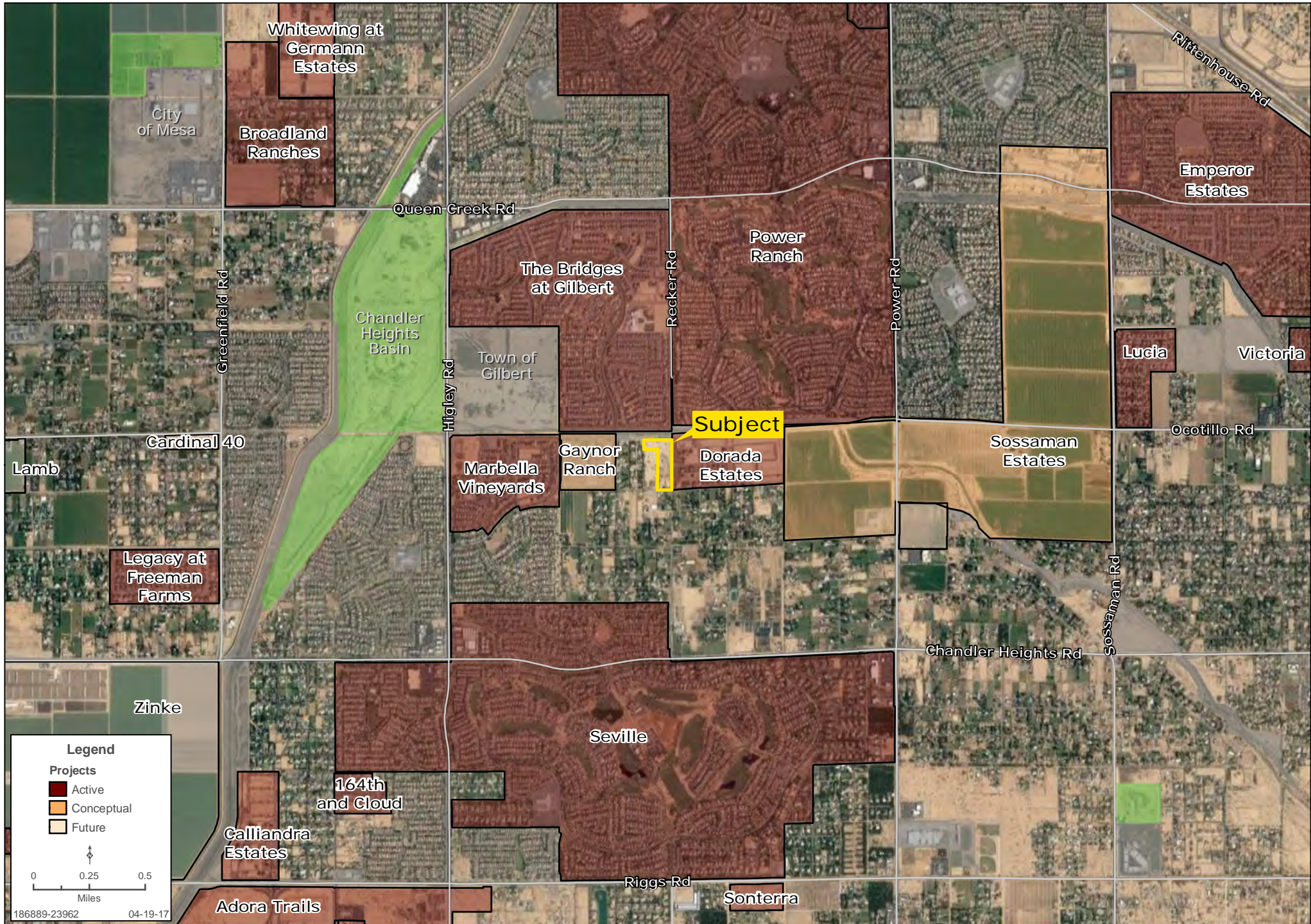
PROPERTY DETAIL MAP

Bret Rinehart | Ryan Semro | Ben Heglie | 480.483.8100 | www.landadvisors.com



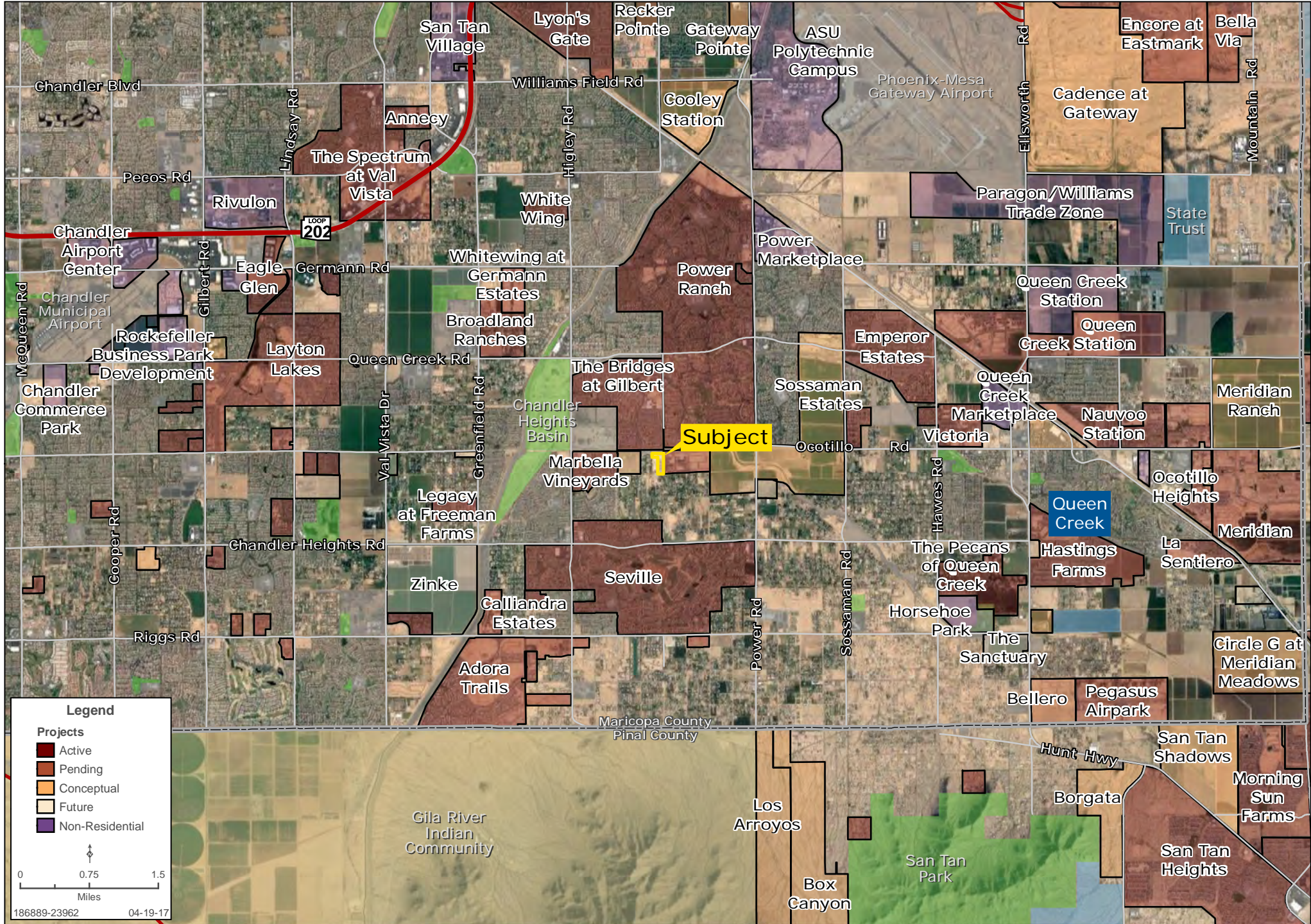
SURROUNDING AREA MAP

Bret Rinehart | Ryan Semro | Ben Heglie | 480.483.8100 | www.landadvisors.com



SURROUNDING DEVELOPMENT MAP

Bret Rinehart | Ryan Semro | Ben Heglie | 480.483.8100 | www.landadvisors.com



REGIONAL MAP

Bret Rinehart | Ryan Semro | Ben Heglie | 480.483.8100 | www.landadvisors.com

