

## PROPERTY FEATURES

- ± 138 Acres Land Parcel South East of the Airport
- Parcel # 103-01-006A
- Zoning A-General
- Located in the west-central Navajo County, Arizona, Winslow-Lindbergh Regional Airport serves as an economic engine to the second largest community in the county. The city of Winslow has an assortment of industries that include transportation, tourism, manufacturing, lumber, trade and retail businesses. Winslow-Lindberg Regional Airport is home to a variety of businesses, which attract travelers from across the region.

## DEMOGRAPHICS

5 MILE

Estimated Population	10,527
Estimated Daytime Employment	9,918
Average Household Income	\$52,116

## AIRPORT FEATURES

Field Elevation	4,941 ft. MSL
Dual Asphalt Runways	4-22 - 7,499 ft x 150 ft 11-29 - 7,099 ft x 150 ft
Transient aircraft tie-down & hangar positions	
On-Site Restaurant	

**Golden St. John**  
Director  
+1 602 229 5970  
golden.stjohn@cushwake.com

**Keri Scott**  
Senior Associate  
+1 602 229 5972  
keri.scott@cushwake.com

**Pat Moroney**  
Associate  
+1 602 224 4403  
pat.moroney@cushwake.com

2555 E Camelback Rd, Suite 400  
Phoenix, AZ  
main +1 602 954 9000  
fax +1 602 253 0528  
**cushmanwakefield.com**

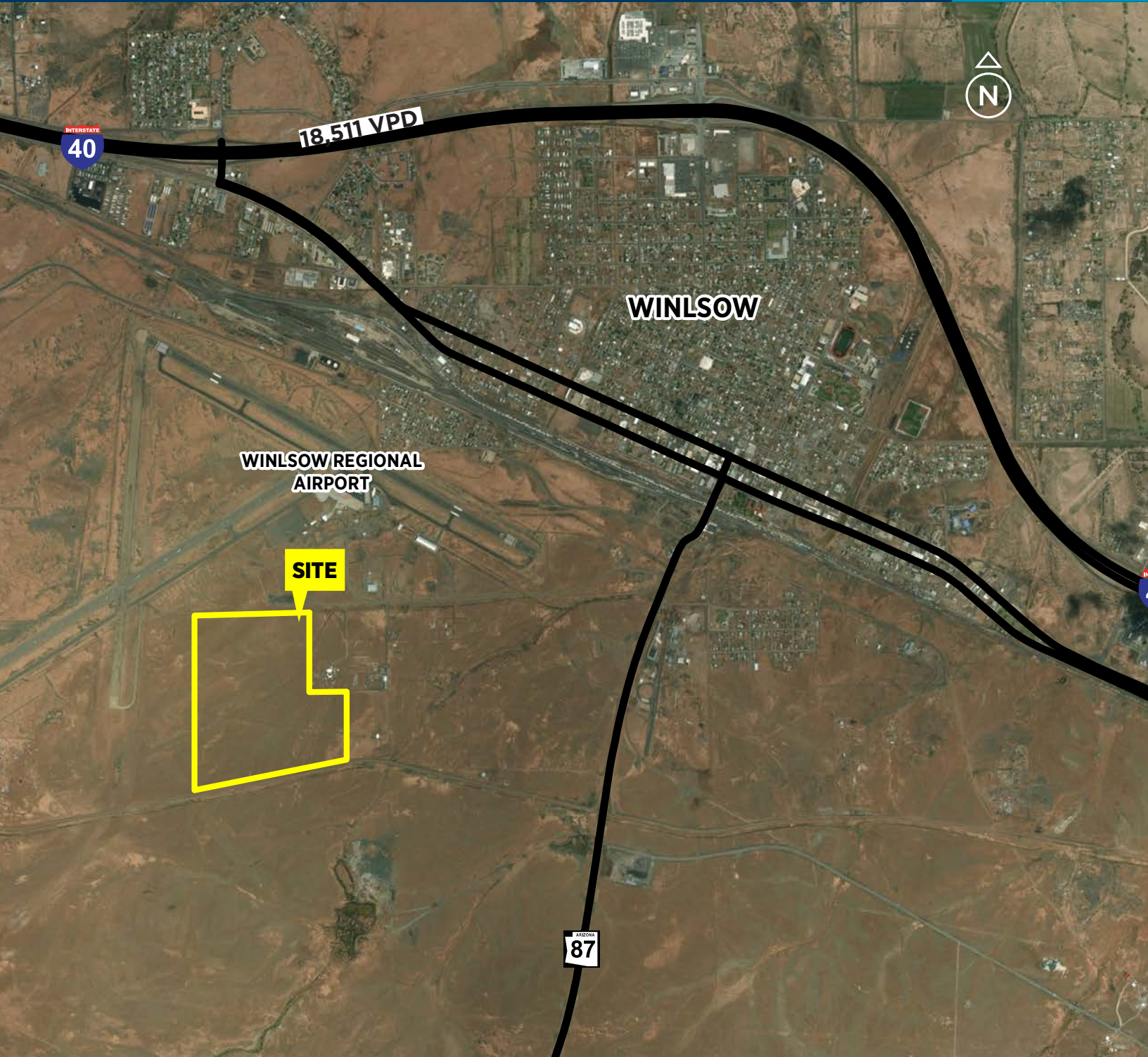




**CUSHMAN &  
WAKEFIELD**

# Winslow Airport Adjacent

± 138 Acres | Winslow, AZ



**Golden St. John**  
Director  
+1 602 229 5970  
golden.stjohn@cushwake.com

**Keri Scott**  
Senior Associate  
+1 602 229 5972  
keri.scott@cushwake.com

**Pat Moroney**  
Associate  
+1 602 224 4403  
pat.moroney@cushwake.com

2555 E Camelback Rd, Suite 400  
Phoenix, AZ  
main +1 602 954 9000  
fax +1 602 253 0528  
**cushmanwakefield.com**



## THE WINSLOW AIRPORT PROVIDES A MAJOR SOURCE OF TRAFFIC

- The airport was built in 1929 by Transcontinental Air Transport (TAT). Aviator Charles Lindbergh, who served as head of TAT's Technical Committee, chose Winslow as one of twelve critical refueling stops on the nation's first transcontinental passenger line. For many years it was the only all weather airport between Albuquerque, New Mexico, and Los Angeles, CA.
- 15,000-20,000 cars daily
- 58 flights a day / 21,170 flights a year
- 2 runways
- U.S. Forest Service has a firefighting Air Tanker base house here
- 8 aircraft based on the field



## WINSLOW AREA ATTRACTIONS

- Meteor Crater
- Area Parks
- Historic Buildings & Museums



## NEARBY MAJOR EMPLOYERS

- US Department of Health & Human Services
- Winslow Campus of Care
- Tooh Dineh Industrices Inc
- Winslow City Hall
- Bashas
- Winslow Indian Healthcare Center
- Turquoise Room
- Meteor Crater Enterprises Inc



### Golden St. John

Director  
+1 602 229 5970  
golden.stjohn@cushwake.com

### Keri Scott

Senior Associate  
+1 602 229 5972  
keri.scott@cushwake.com

### Pat Moroney

Associate  
+1 602 224 4403  
pat.moroney@cushwake.com

2555 E Camelback Rd, Suite 400  
Phoenix, AZ  
main +1 602 954 9000  
fax +1 602 253 0528  
[cushmanwakefield.com](http://cushmanwakefield.com)