

LARGE LOTS AVAILABLE

17-253 ACRES

SHBPW

SOUTH HILL BUSINESS PARK WEST



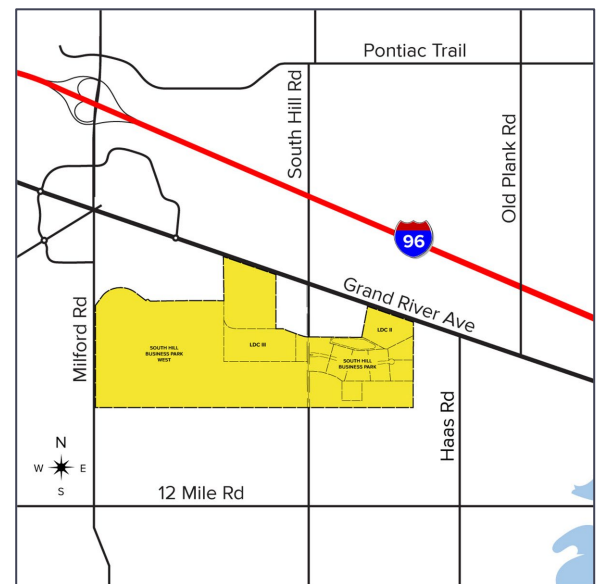
**SIGNATURE
ASSOCIATES**
KNOW SIGNATURE | KNOW RESULTS

GRAND RIVER AVENUE LYON TOWNSHIP, MI



PROPERTY FEATURES

- Lots from 17-253 acres available for major users
- Prime frontage on Grand River Ave, Milford Road & South Hill Road
- Exceptional development opportunity in Oakland County's fastest growing community
- Minutes from Ascension Providence Hospital, Huron Valley Sinai Hospital, and University of Michigan Hospital, three of Michigan's top healthcare providers
- Flexible zoning, ideal for a variety of uses



For more information, please contact:

STEVE GORDON

(248) 948 0101

sgordon@signatureassociates.com

SIGNATURE ASSOCIATES

One Towne Square, Suite 1200

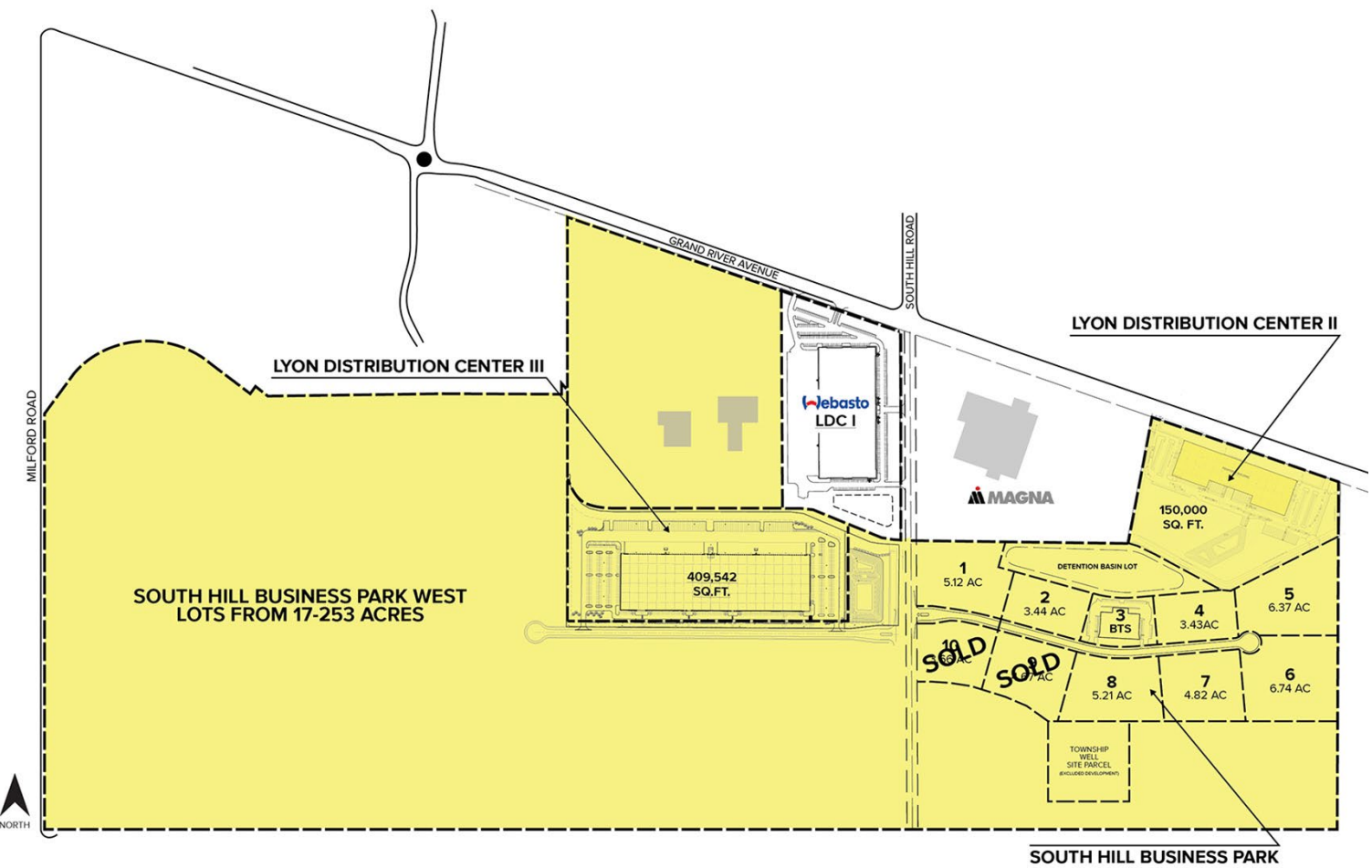
Southfield, MI 48076

www.signatureassociates.com

LARGE LOTS AVAILABLE | 17-253 ACRES

Grand River Avenue – Lyon Township, Michigan

Site Plan



For more information, please contact:
STEVE GORDON
(248) 948 0101
sgordon@signatureassociates.com

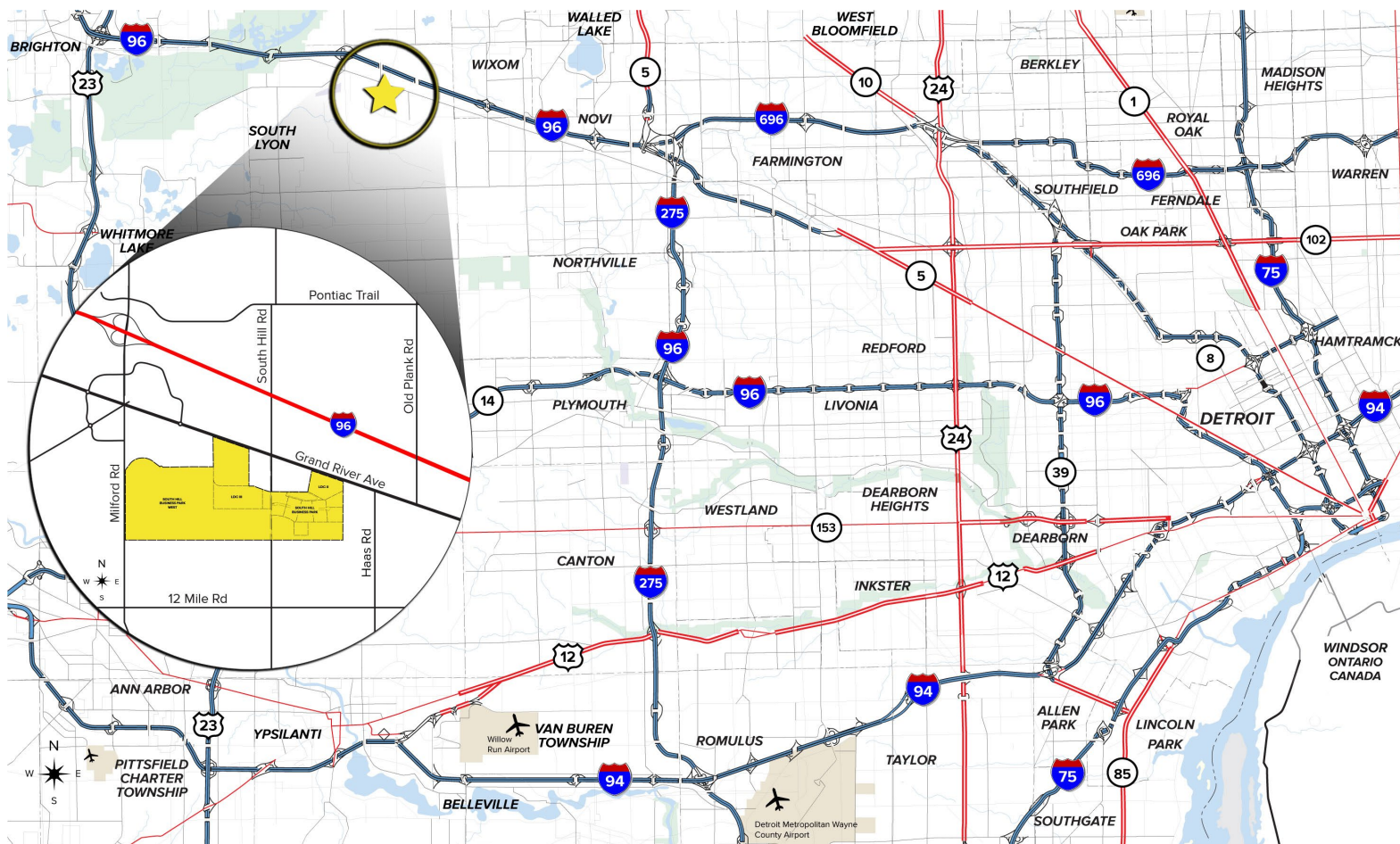
SIGNATURE ASSOCIATES
One Towne Square, Suite 1200
Southfield, MI 48076
www.signatureassociates.com

Information is subject to verification and no liability for errors or omissions is assumed. Price is subject to change and listing withdrawal.

LARGE LOTS AVAILABLE | 17-253 ACRES

Grand River Avenue – Lyon Township, Michigan

Regional Map



- 35-minute drive to Detroit Metro Airport and Flint Bishop Airport
- Water and sewer on-site
- Convenient I-96 freeway access to major businesses, industrial, and automotive headquarters in the region
- High average daily traffic counts on I-96 freeway, Milford Rd and Grand River Ave

DEMOGRAPHICS (5-MILE RADIUS)

POPULATION:	68,092
HOUSEHOLD INCOME:	\$112,546
NUMBER OF BUSINESSES:	3,061
DAYTIME EMPLOYEES:	37,161

For more information, please contact:

STEVE GORDON

(248) 948 0101

sgordon@signatureassociates.com

SIGNATURE ASSOCIATES
One Towne Square, Suite 1200
Southfield, MI 48076
www.signatureassociates.com