

Davis Commerce Center

22717 72nd Avenue South
Building B, Ste 101
Kent, WA

±2,500 SF total

±850 SF office

Corner suite

Adjacent to beautiful patio

Plenty of parking

1 grade-level door

On-site management

Call for rates

Available February 1, 2019

Comcast cable available



Location



Contact

Doug Klein, SIOR

206.248.7348

dklein@kiddermathews.com

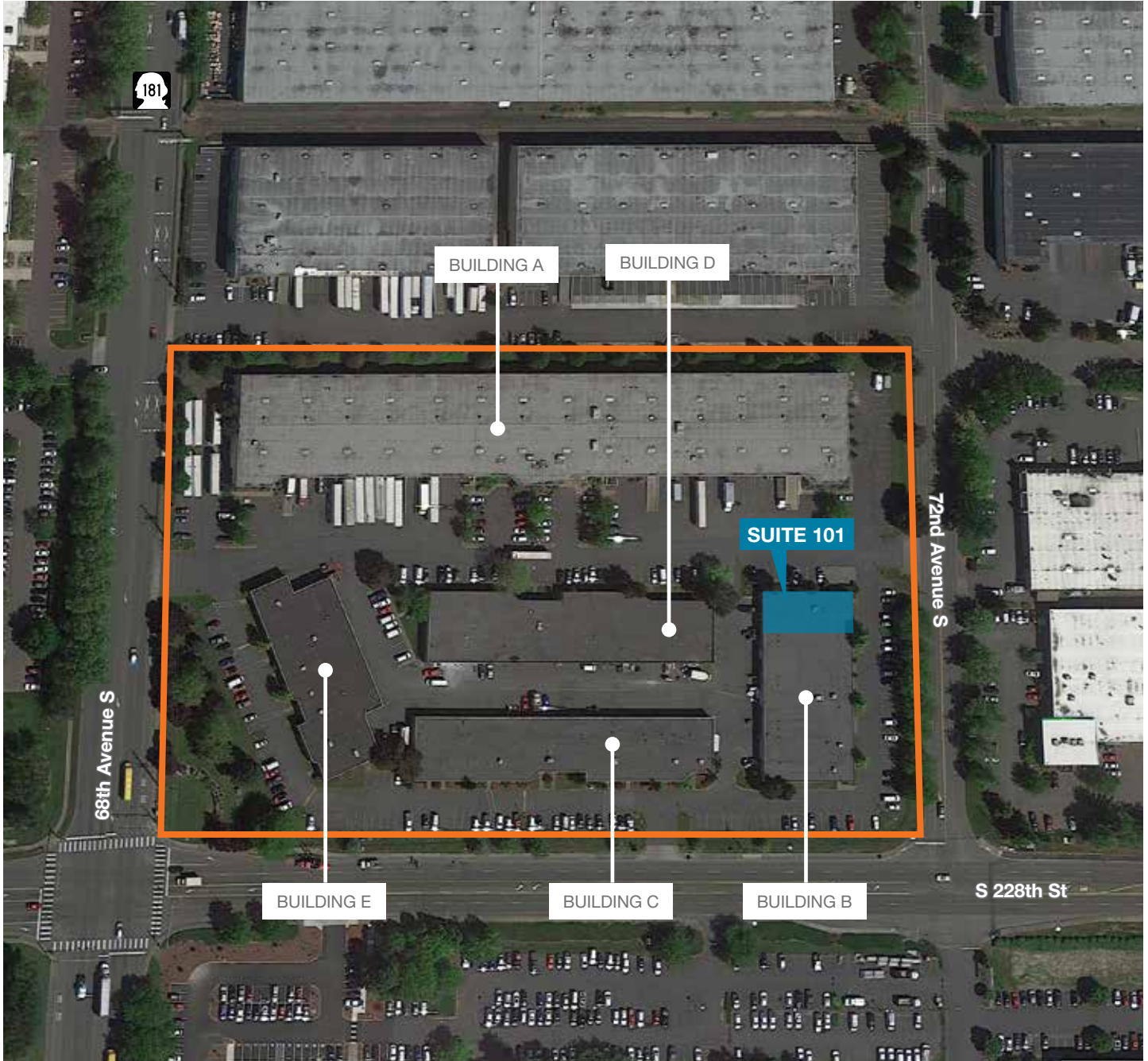
Travis Stanaway

206.248.6526

traviss@kiddermathews.com



Davis Commerce Center

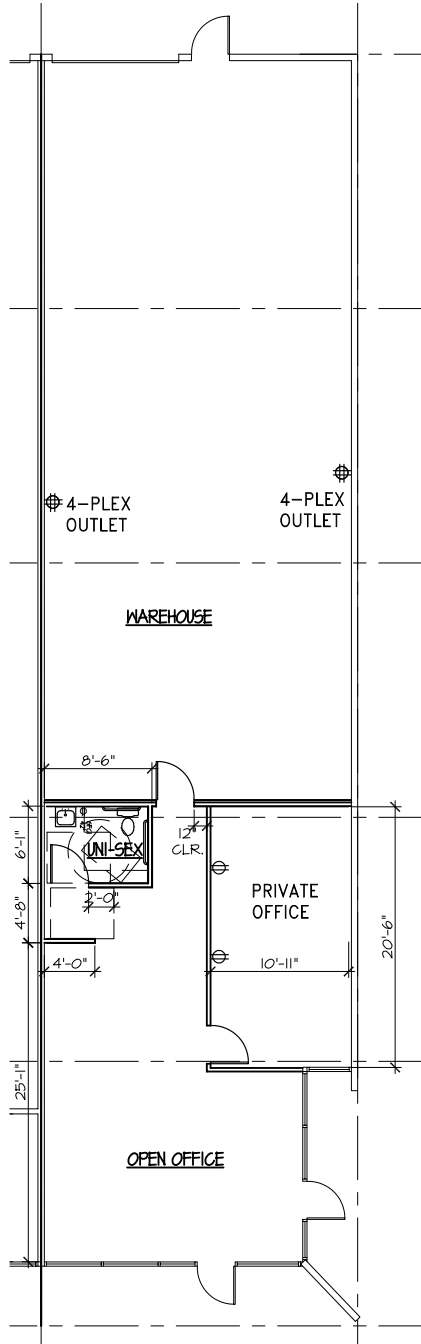


Contact

Doug Klein, SIOR
206.248.7348
dklein@kiddermathews.com

Travis Stanaway
206.248.6526
traviss@kiddermathews.com

Davis Commerce Center



Contact

Doug Klein, SIOR
206.248.7348
dklein@kiddermathews.com

Travis Stanaway
206.248.6526
traviss@kiddermathews.com