

For Sale or Lease

Property Description

Great tract of property, zoned commercial heavy and located only a ¼ mile from I-49 exit. Owner is willing to sale entire 6.9 acres, carve out a portion or perhaps develop as a Build to Suit opportunity (Office or industrial).

Land Size

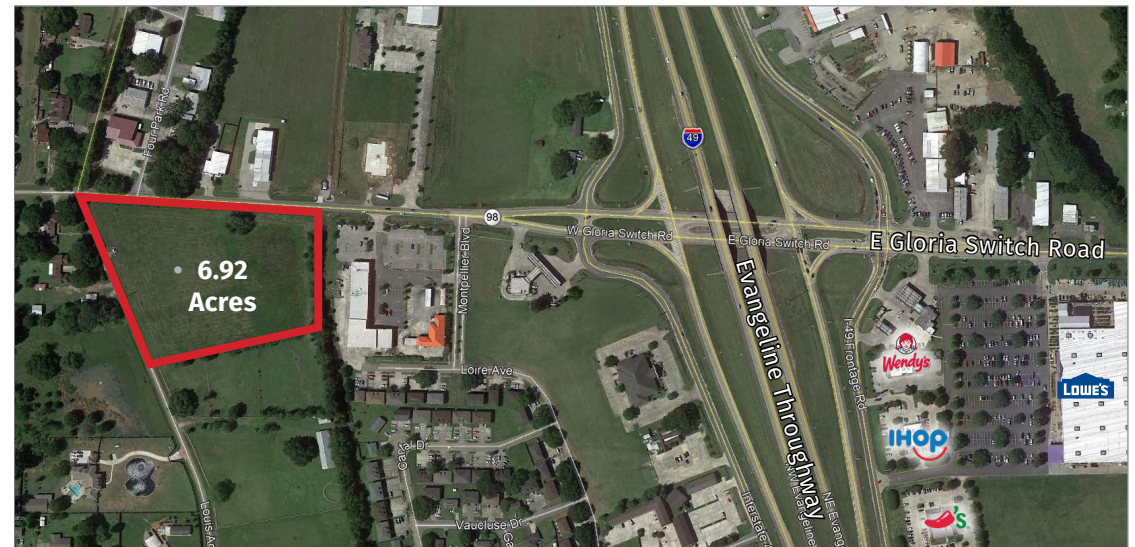
- 1 - 6.92 Acres

For Lease

- 4,000 - 50,000 SF
- See Agent for Pricing

For Sale

- 1 - 6.9 Acres
- See Agent for Pricing
- \$795,000 for whole parcel



Seth Citron

Office: 337-234-4481

Direct: 337-572-0273

scitron@stirlingprop.com

601 Louis Arceneaux

601 Louis Arceneaux, Lafayette, LA

Overview

Aerial

Industrial Layout

Demographics

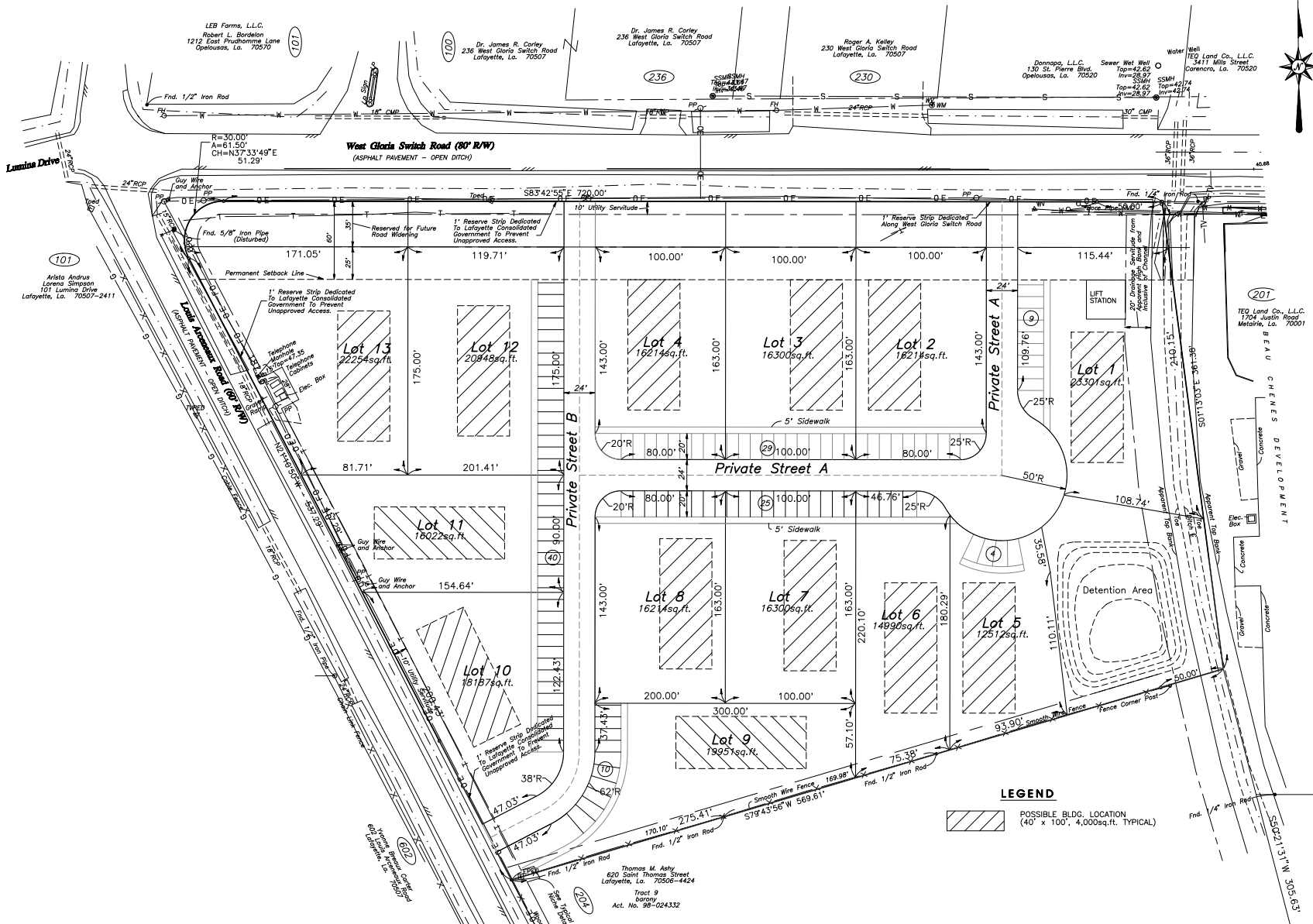


Overview

Aerial

Industrial Layout

Demographics



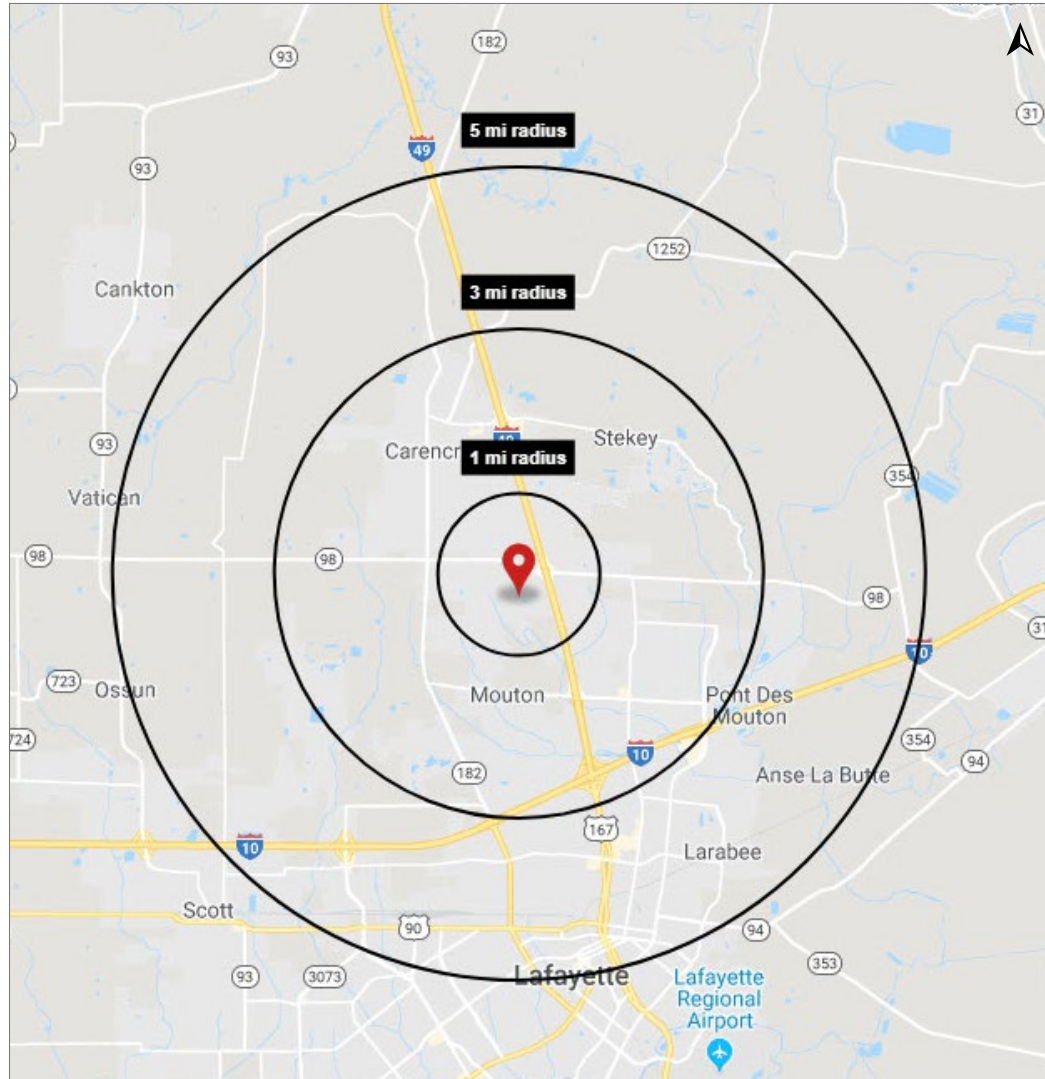
Overview

Aerial

Industrial Layout

Demographics

Demographic Map



2019 Demographics

	1 mi.	3 mi.	5 mi.
Population	3,180	28,068	72,583
Avg. HH Income	\$46,111	\$53,847	\$53,526
Est. Households	1,377	11,267	28,744