



# 18.06 ACRE FARM FOR SALE

Truman & Webb Road, North of Oak Grove, Missouri



## SALE PRICE: \$325,000 | 18.06 ACRES

### DEMOGRAPHICS

	1 mile	3 miles	5 miles
Estimated Population	148	2,694	13,346
Avg. Household Income	\$105,720	\$71,949	\$74,650

- Includes twenty-two greenhouses
- Water and electricity available
- Equipment shed available
- Great for any agri-business
- Priced to sell



CLICK HERE TO VIEW MORE LISTING INFORMATION

For More Information Contact:

DIMITRI RODOPOULOS | 816.412.7372 | [drodopoulos@blockandco.com](mailto:drodopoulos@blockandco.com)

BOB WALLEN | 816.412.7371 | [bwallen@blockandco.com](mailto:bwallen@blockandco.com)

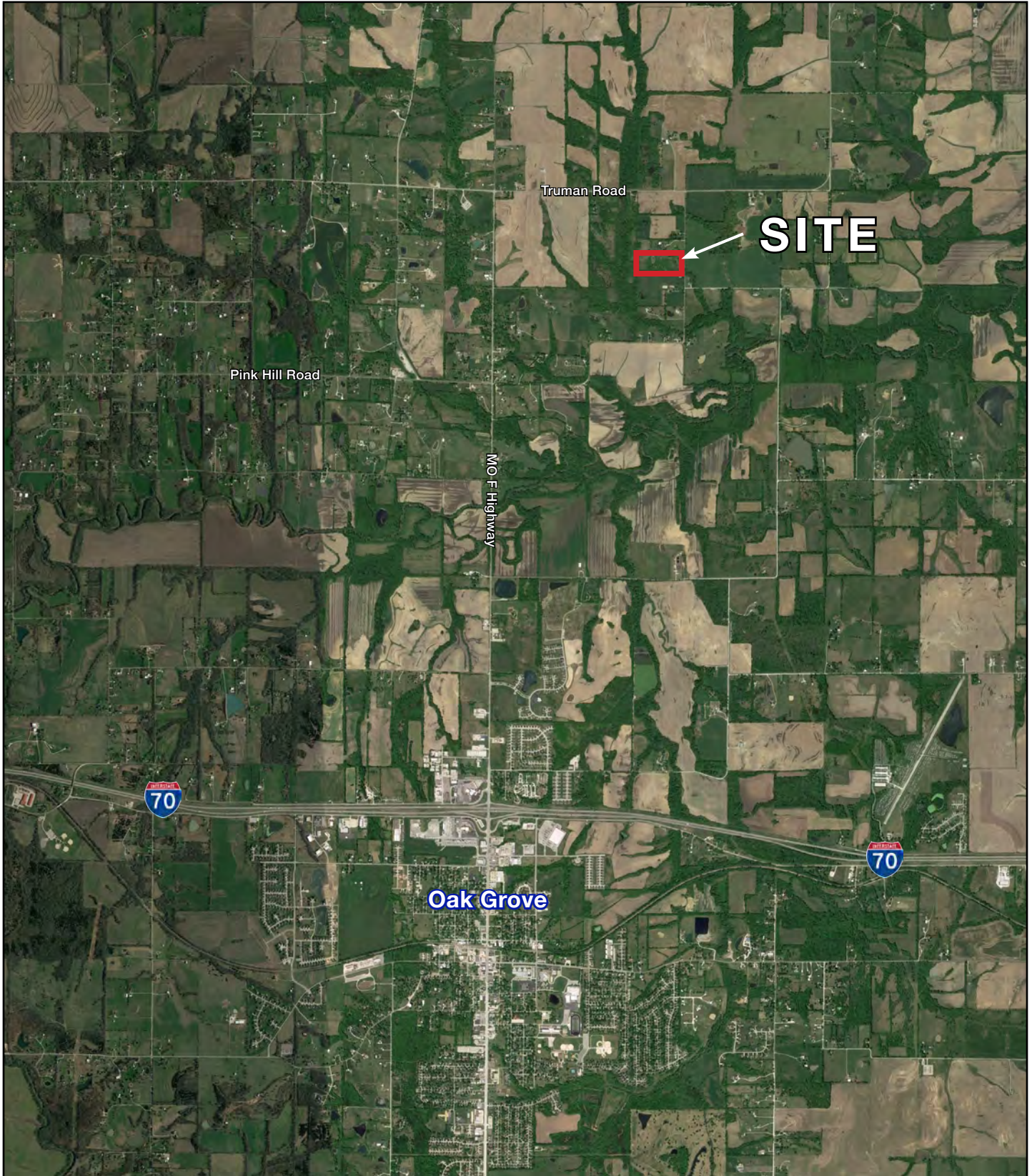
Exclusive Agents



## GREENHOUSE AND EQUIPMENT PHOTOS



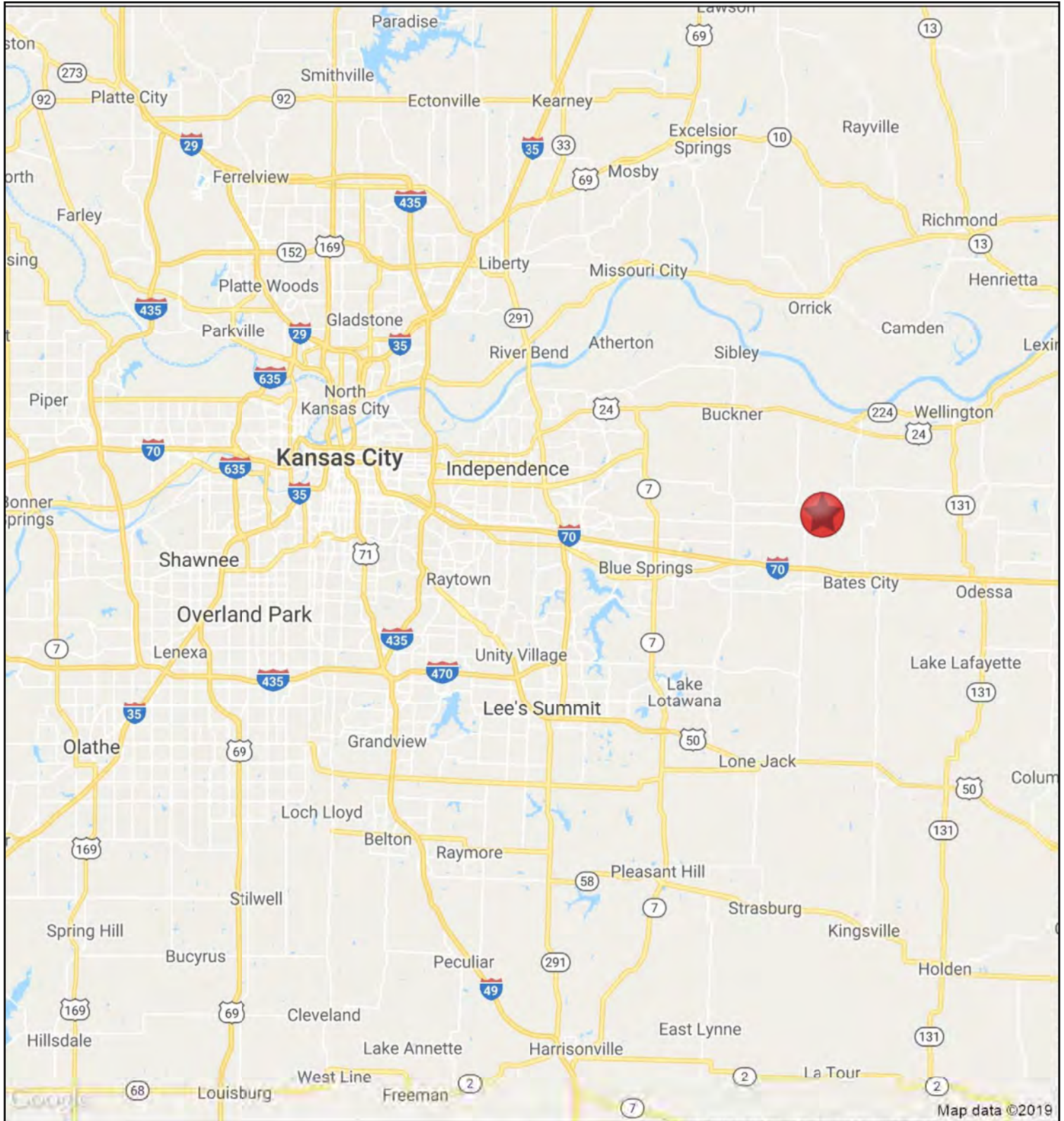
AERIAL





# 18.06 ACRE FARM FOR SALE

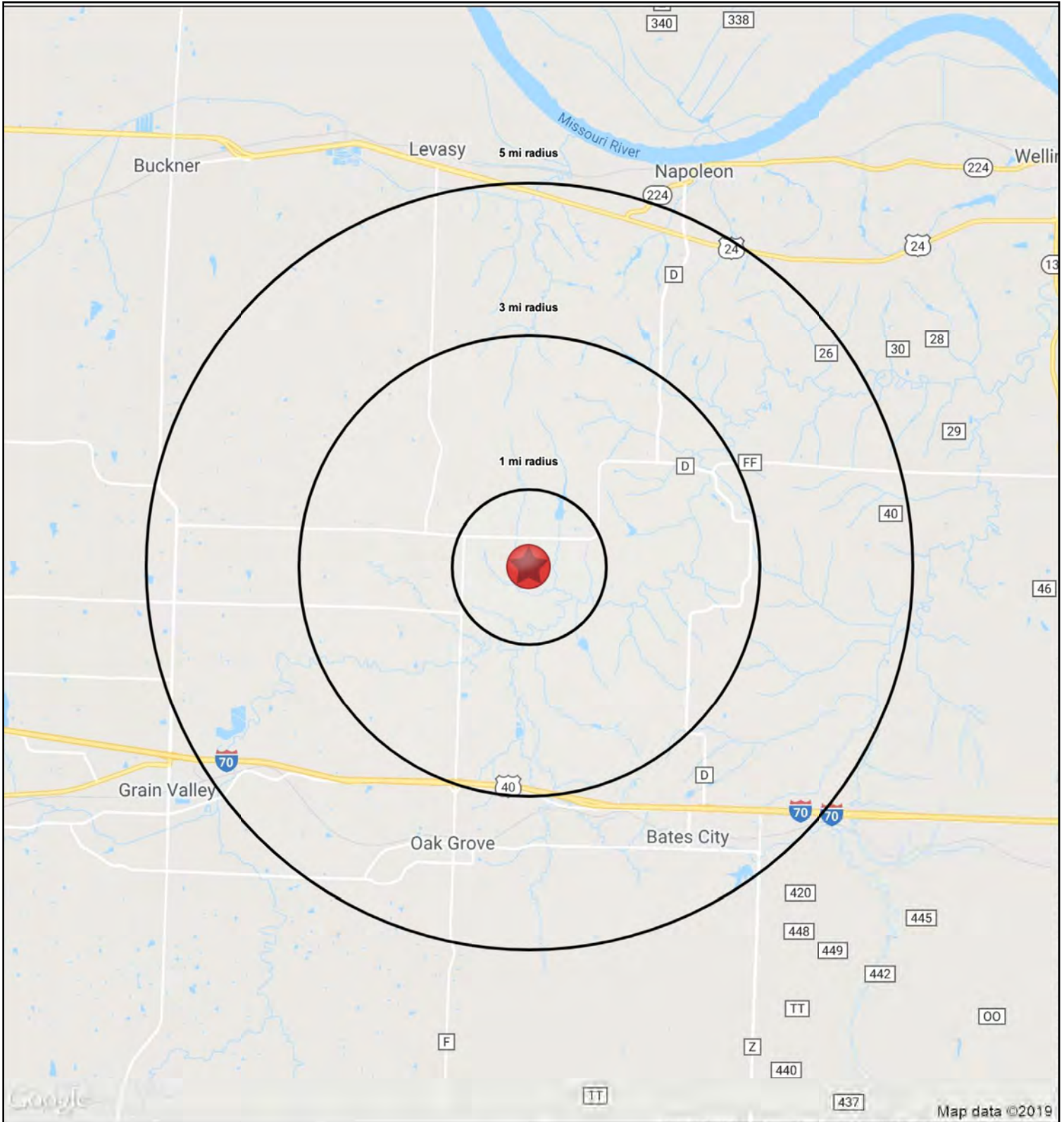
Truman & Webb Road, North of Oak Grove, Missouri





# 18.06 ACRE FARM FOR SALE

Truman & Webb Road, North of Oak Grove, Missouri





# 18.06 ACRE FARM FOR SALE

Truman & Webb Road, North of Oak Grove, Missouri

RS1

Webb Road		1 mi radius	3 mi radius	5 mi radius
MO 64075				
POPULATION	2019 Estimated Population	148	2,694	13,346
	2024 Projected Population	151	2,750	13,633
	2010 Census Population	150	2,561	12,324
	2000 Census Population	104	1,477	9,422
	Projected Annual Growth 2019 to 2024	0.4%	0.4%	0.4%
	Historical Annual Growth 2000 to 2019	2.2%	4.3%	2.2%
	2019 Median Age	39.5	36.2	36.3
HOUSEHOLDS	2019 Estimated Households	55	1,061	5,086
	2024 Projected Households	56	1,077	5,157
	2010 Census Households	53	950	4,440
	2000 Census Households	37	526	3,363
	Projected Annual Growth 2019 to 2024	0.3%	0.3%	0.3%
	Historical Annual Growth 2000 to 2019	2.6%	5.3%	2.7%
RACE AND ETHNICITY	2019 Estimated White	94.8%	92.8%	93.8%
	2019 Estimated Black or African American	1.0%	2.1%	1.5%
	2019 Estimated Asian or Pacific Islander	0.9%	0.8%	1.0%
	2019 Estimated American Indian or Native Alaskan	0.7%	0.9%	0.7%
	2019 Estimated Other Races	2.6%	3.4%	3.0%
	2019 Estimated Hispanic	3.5%	3.3%	3.7%
INCOME	2019 Estimated Average Household Income	\$105,720	\$71,949	\$74,650
	2019 Estimated Median Household Income	\$91,433	\$68,339	\$67,177
	2019 Estimated Per Capita Income	\$39,303	\$28,350	\$28,481
EDUCATION (AGE 25+)	2019 Estimated Elementary (Grade Level 0 to 8)	1.6%	1.2%	1.9%
	2019 Estimated Some High School (Grade Level 9 to 11)	4.5%	4.8%	5.2%
	2019 Estimated High School Graduate	33.3%	33.2%	36.5%
	2019 Estimated Some College	23.5%	27.5%	26.6%
	2019 Estimated Associates Degree Only	5.8%	7.9%	8.2%
	2019 Estimated Bachelors Degree Only	21.5%	18.4%	14.9%
	2019 Estimated Graduate Degree	9.8%	6.9%	6.8%
BUSINESS	2019 Estimated Total Businesses	-	36	340
	2019 Estimated Total Employees	-	435	3,611
	2019 Estimated Employee Population per Business	-	12.0	10.6
	2019 Estimated Residential Population per Business	-	74.6	39.2

