

5454 EAGLE CENTER DRIVE
BRIGHTON TWP., MICHIGAN

HI-TECH/OFFICE FOR SALE
10,957 Square Feet Available



**SIGNATURE
ASSOCIATES**
KNOW SIGNATURE | KNOW RESULTS

EAGLE BUSINESS CENTER



PROPERTY FEATURES

- 10,957 square feet available
- 14' clear height
- (2) 12x14 grade level doors
- Zoned B-3
- 240 volts power
- Perfect for owner/investor
- (2) credit tenants currently occupy 3,500 sq. ft.
- Approximately 4,000 sq. ft. shop
- Beautifully maintained in high-end business park
- Sale Price: \$1,200,000 (\$109.52/sq.ft.)



For more information, please contact:

JIM MONTGOMERY
(248) 359 0614
jmontgomery@signatureassociates.com

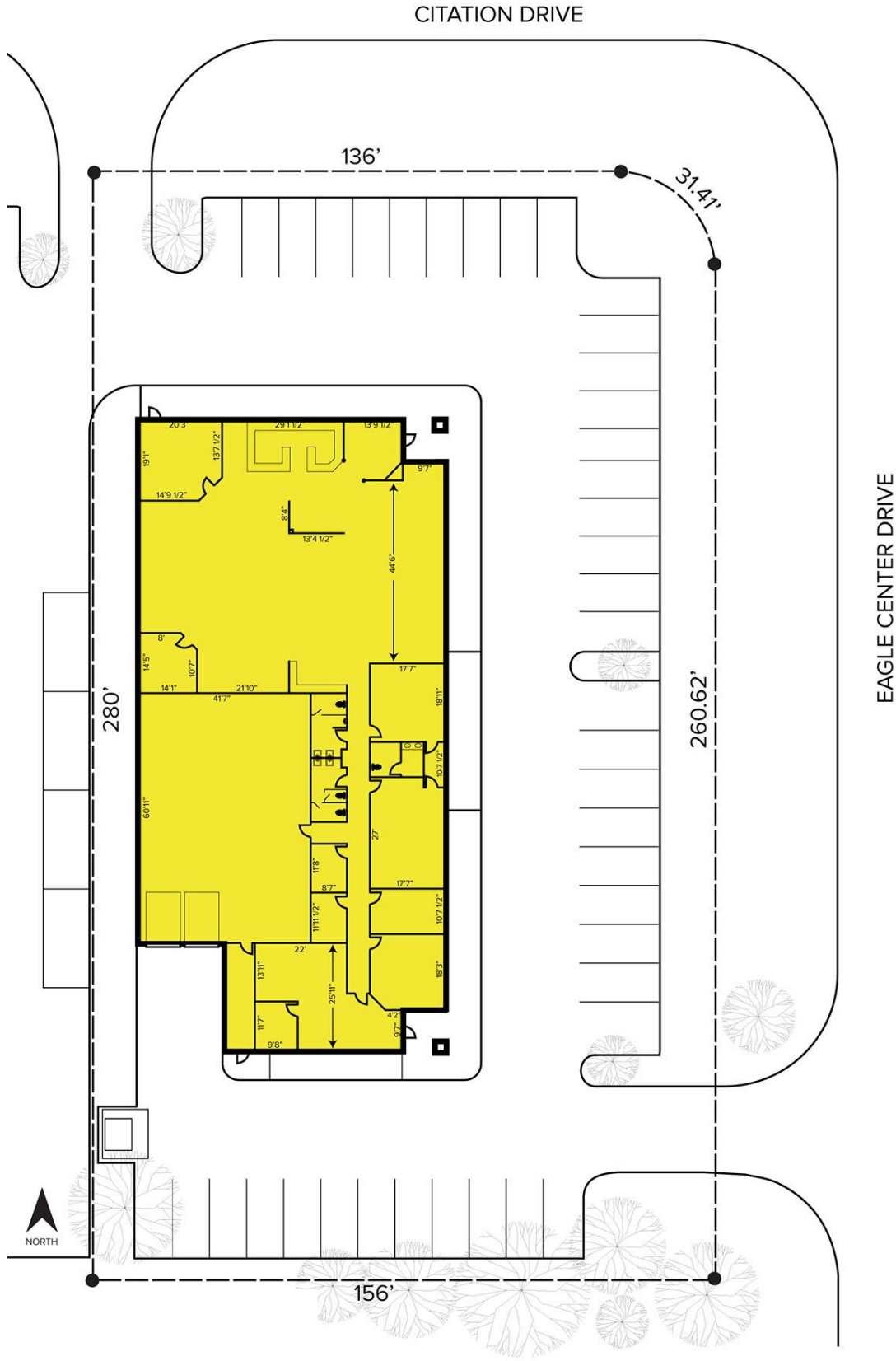
SIGNATURE ASSOCIATES
One Towne Square, Suite 1200
Southfield, MI 48076
www.signatureassociates.com

5454 Eagle Center Drive – Brighton Twp., Michigan

Hi-Tech/Office For Sale

10,957
Square Feet
AVAILABLE

Site Plan



For more information, please contact:

JIM MONTGOMERY
(248) 359 0614
jmontgomery@signatureassociates.com

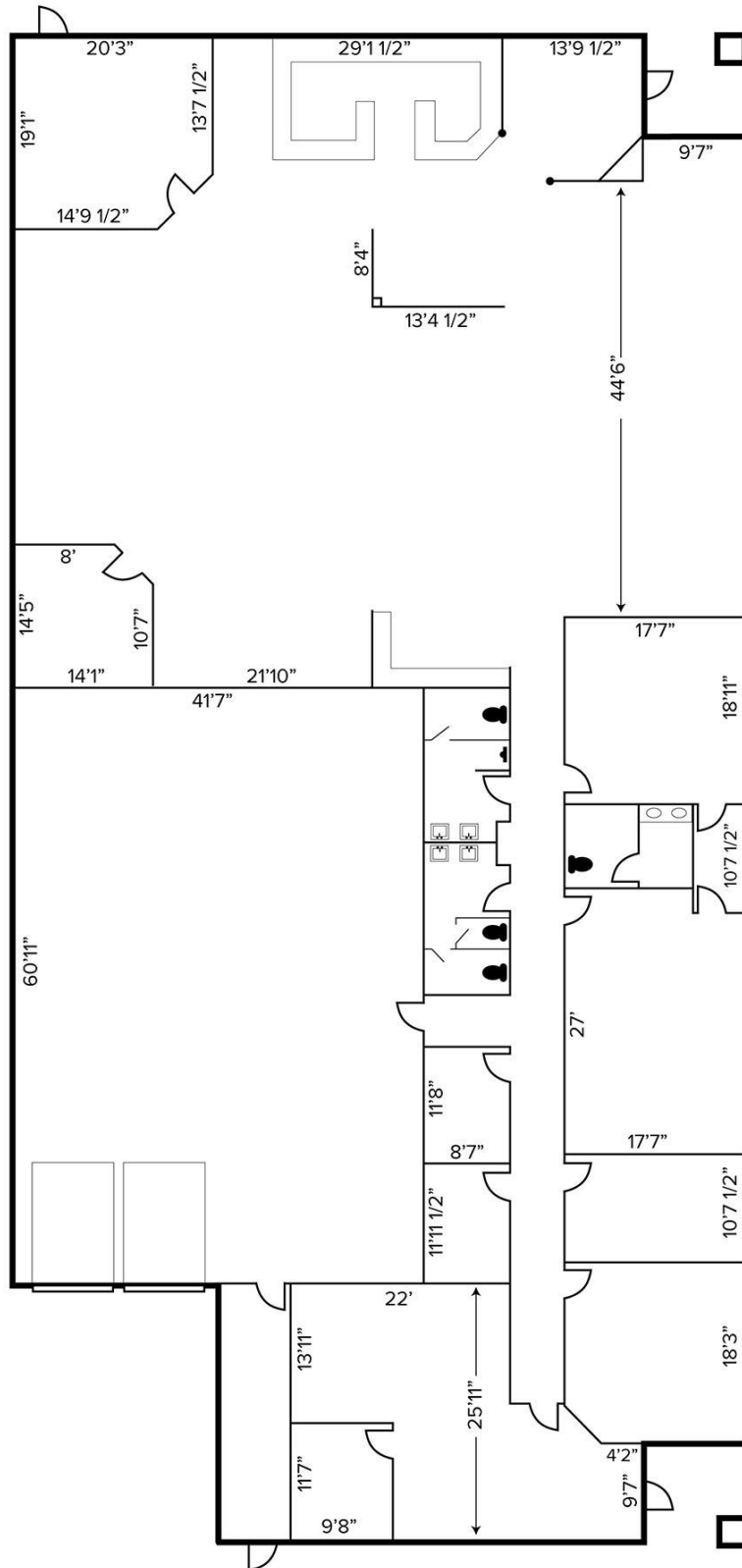
SIGNATURE ASSOCIATES
One Towne Square, Suite 1200
Southfield, MI 48076
www.signatureassociates.com

5454 Eagle Center Drive – Brighton Twp., Michigan

Hi-Tech/Office For Sale

10,957
Square Feet
AVAILABLE

Floor Plan



For more information, please contact:

JIM MONTGOMERY
(248) 359 0614
jmontgomery@signatureassociates.com

SIGNATURE ASSOCIATES
One Towne Square, Suite 1200
Southfield, MI 48076
www.signatureassociates.com

5454 Eagle Center Drive – Brighton Twp., Michigan

Hi-Tech/Office For Sale

10,957
Square Feet
AVAILABLE

Aerial



For more information, please contact:
JIM MONTGOMERY
(248) 359 0614
jmontgomery@signatureassociates.com

SIGNATURE ASSOCIATES
One Towne Square, Suite 1200
Southfield, MI 48076
www.signatureassociates.com

Information is subject to verification and no liability for errors or omissions is assumed. Price is subject to change and listing withdrawal.