

I-77 & Highway 34 East

Ridgeway, South Carolina



For more
information:

Exclusive Broker

Tombo Milliken

Direct: 803-744-9852

Cell: 803-206-8384

tombo.milliken@naiavant.com

Exclusive Broker

Tom Milliken

Direct: 803-744-9837

Cell: 803-331-6999

tmilliken@naiavant.com

Table of Contents

Location Map.....	Page 3
Summary of Property Information.....	Page 4
Aerial Uses.....	Page 5
Aerial.....	Page 6
Infared.....	Page 7
Topography Aerial.....	Page 8
Soil Survey.....	Page 9

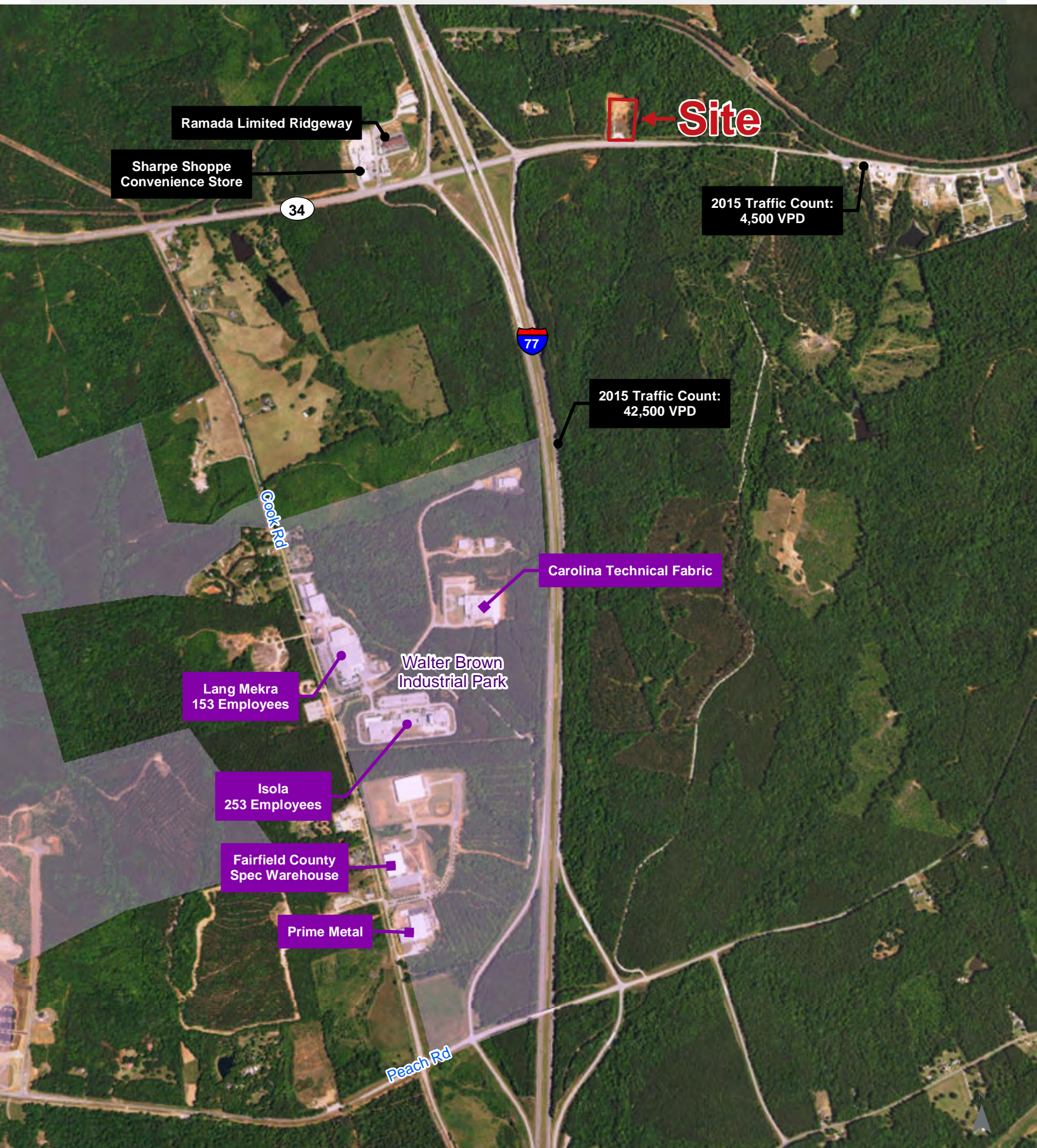
Location Map



Map Updated: Monday, November 18, 2013. This information submitted is not guaranteed. Although obtained from reliable sources, all information should be confirmed prior to use or reliance upon the information. This document may not be reproduced in whole or in part without the express written consent of NAI Avant.

Property Features

- ±2.83 acres for sale off Highway 34 at I-77
- Within site of I-77; Midway between Columbia and Charlotte
- Zoning: B-2 (General Business), Fairfield County
- Water across Highway 34 and sewer is just across and under I-77 (Utility availability, capacity and location to be verified by Purchaser)
- Dirt has been removed to level site
- 2015 Traffic Counts: Station #128: 4,500 VPD
Station #2230: 42,500 VPD
- Sales Price: ~~\$279,000 (\$97,173/Acre)~~
\$179,000 (\$63,251/Acre)



Map Updated: Thursday, March 16, 2017. This information submitted is not guaranteed. Although obtained from reliable sources, all information should be confirmed prior to use or reliance upon the information. This document may not be reproduced in whole or in part without the express written consent of NAI Avant.



Site

34



Map Updated: Monday, November 18, 2013. This information submitted is not guaranteed. Although obtained from reliable sources, all information should be confirmed prior to use or reliance upon the information. This document may not be reproduced in whole or in part without the express written consent of NAI Avant.



34

Site

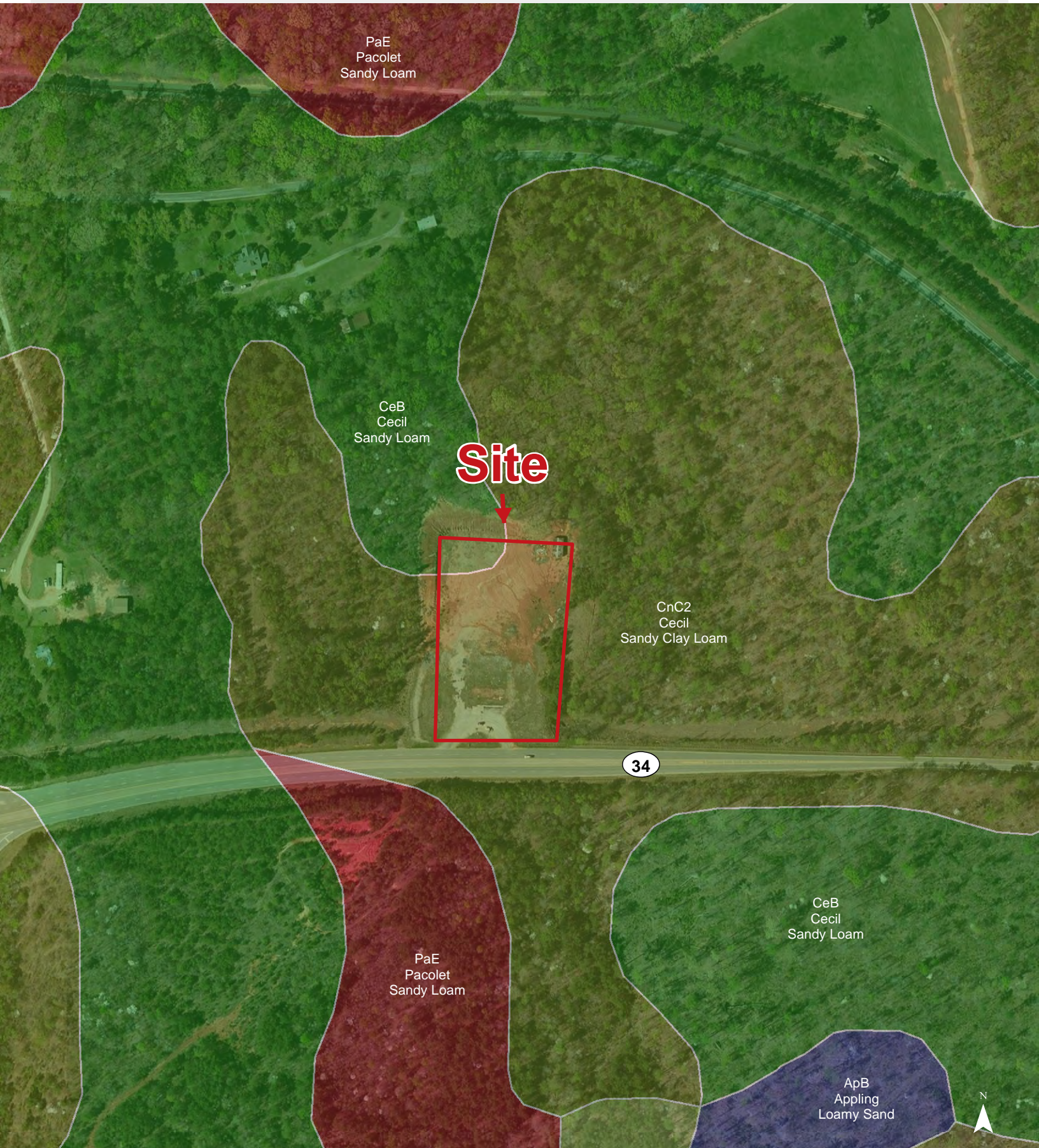
Map Updated: Monday, November 18, 2013. This information submitted is not guaranteed. Although obtained from reliable sources, all information should be confirmed prior to use or reliance upon the information. This document may not be reproduced in whole or in part without the express written consent of NAI Avant.

Topographical Map: 10' Contours



Map Updated: Monday, November 18, 2013. This information submitted is not guaranteed. Although obtained from reliable sources, all information should be confirmed prior to use or reliance upon the information. This document may not be reproduced in whole or in part without the express written consent of NAI Avant.

Soil Survey



Map Updated: Monday, November 18, 2013. This information submitted is not guaranteed. Although obtained from reliable sources, all information should be confirmed prior to use or reliance upon the information. This document may not be reproduced in whole or in part without the express written consent of NAI Avant.