

7

GIRALDA FARMS

MADISON, NEW JERSEY



Three-story office
building totaling
237,000 SF



\$3.6M CAPITAL IMPROVEMENT PROGRAM

Renovations include upgrades to all common areas. New amenities will include an executive lounge, collaboration and entertainment areas, a conference and training center, coworking offices, outdoor seating, and recreational facilities.

// PROPERTY FEATURES



Two-story atrium entrance with granite and wood accent finishes



Flexible floor plates to accommodate users from 4-5,000 sq. ft. to a full floor of 80,000 sq. ft.



On-site building management



On-site food service with terrace patio seating



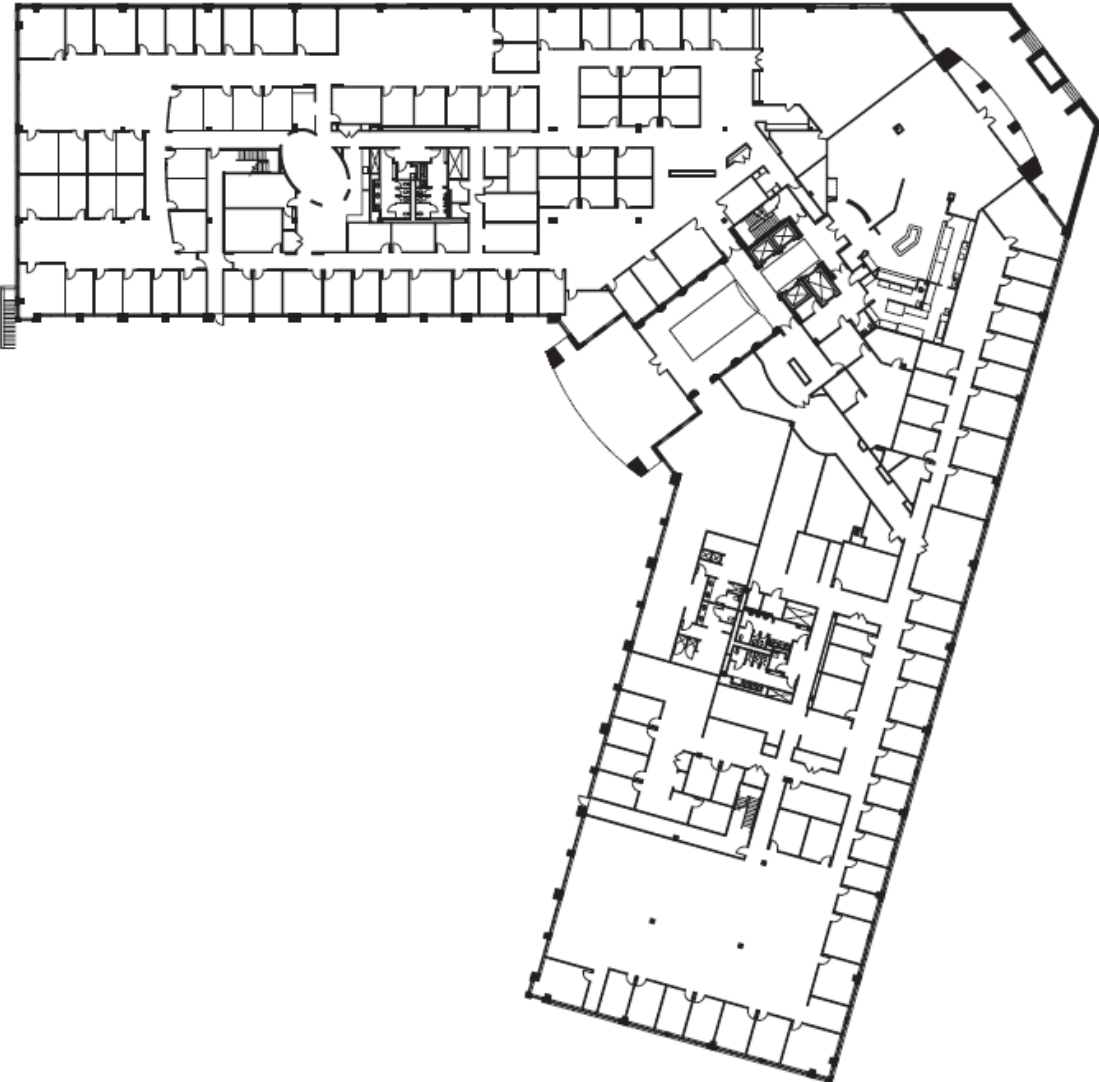
On-site fitness center with locker rooms



Bike share program

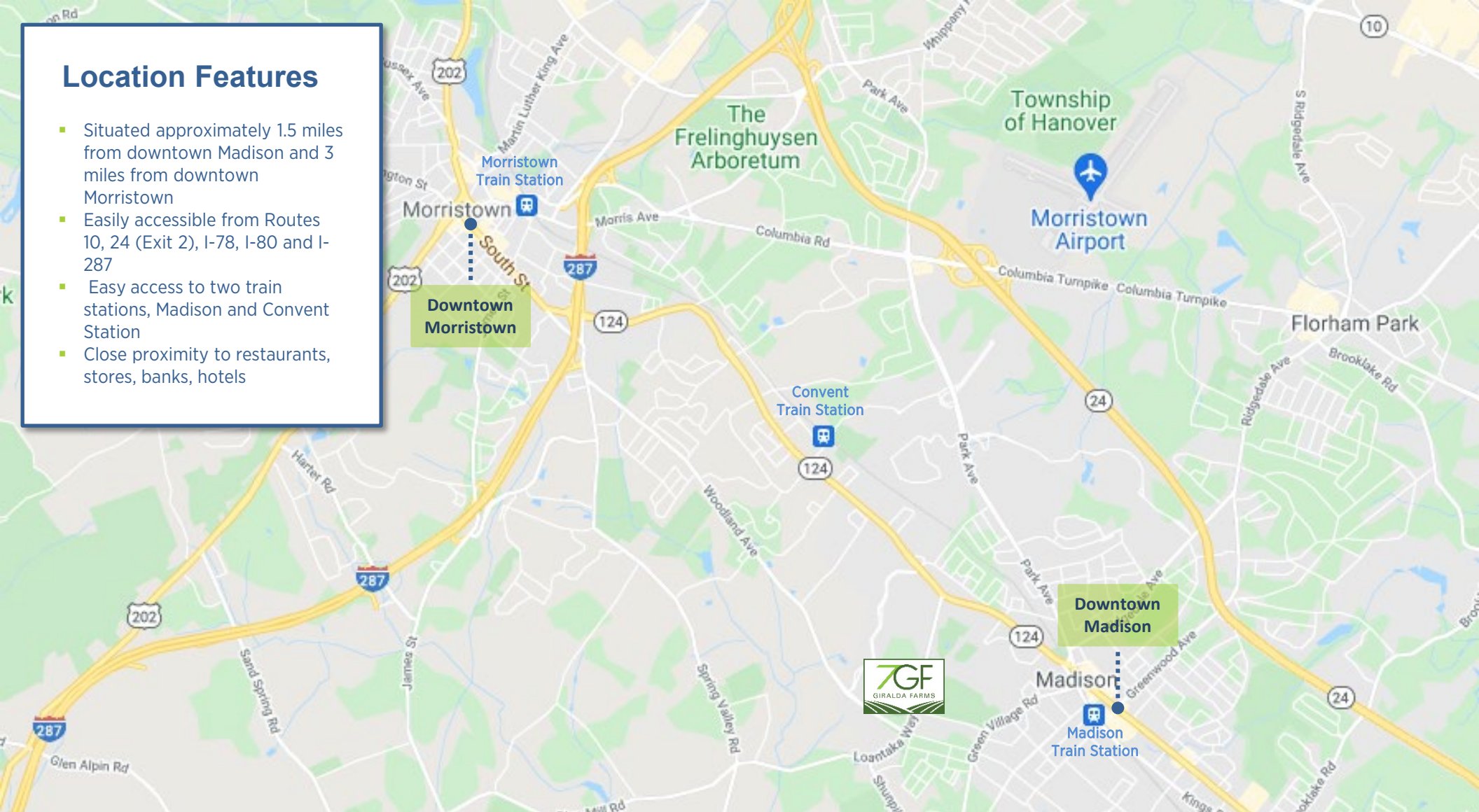


TYPICAL FLOOR PLAN



Location Features

- Situated approximately 1.5 miles from downtown Madison and 3 miles from downtown Morristown
- Easily accessible from Routes 10, 24 (Exit 2), I-78, I-80 and I-287
- Easy access to two train stations, Madison and Convent Station
- Close proximity to restaurants, stores, banks, hotels



// CONTACT

JOSHUA COHEN
Managing Director
+1 973 292 4618
josh.cohen@cushwake.com

BILL BROWN
Executive Director
+1 973 292 4613
bill.brown@cushwake.com

JOSEPH RATNER
Associate
+1 973 292 4611
joseph.ratner@cushwake.com



Owned and Managed by:

