

FORMER BANK

FOR LEASE

31329 3RD AVENUE | BLACK DIAMOND, WA 98010

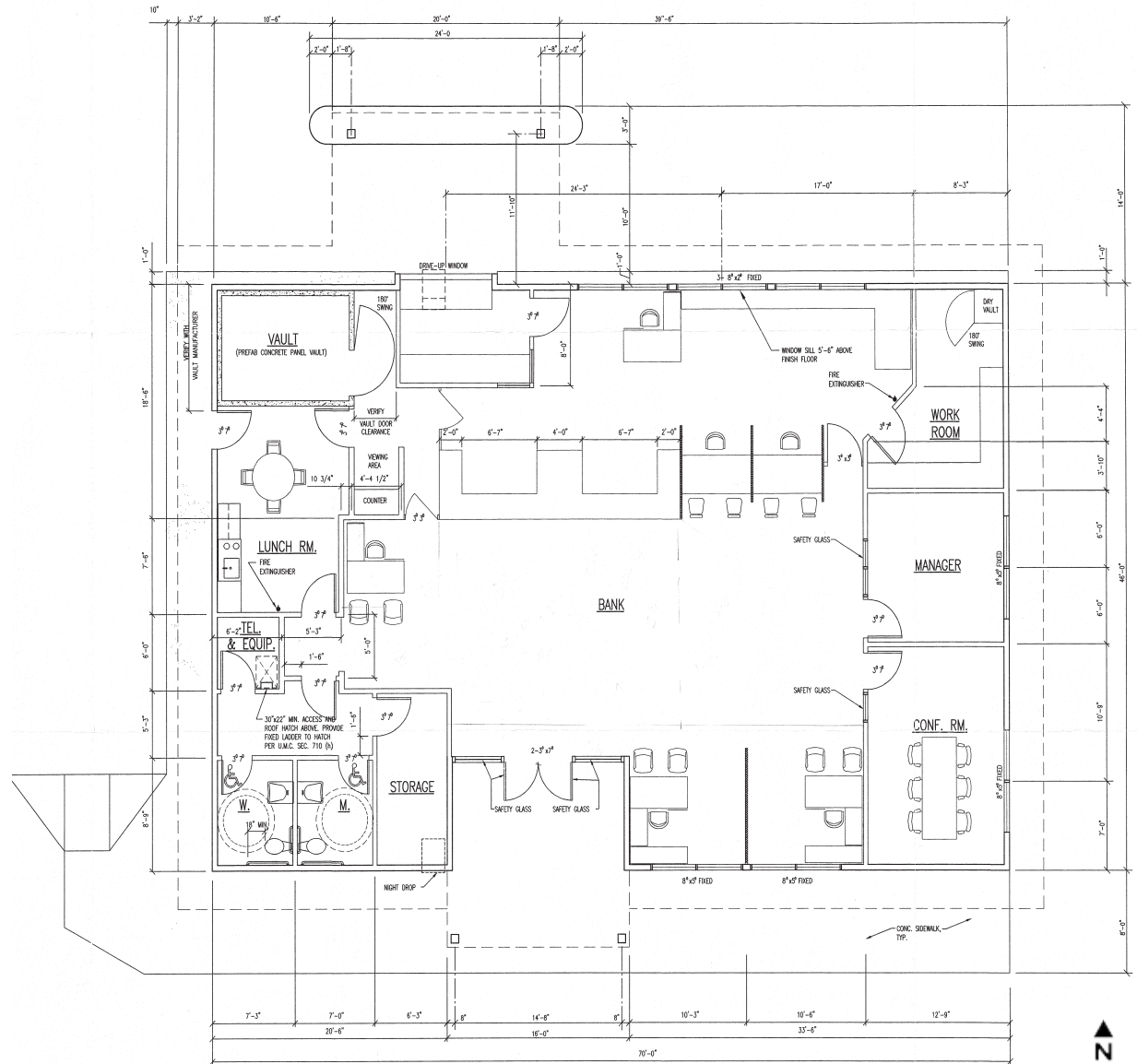


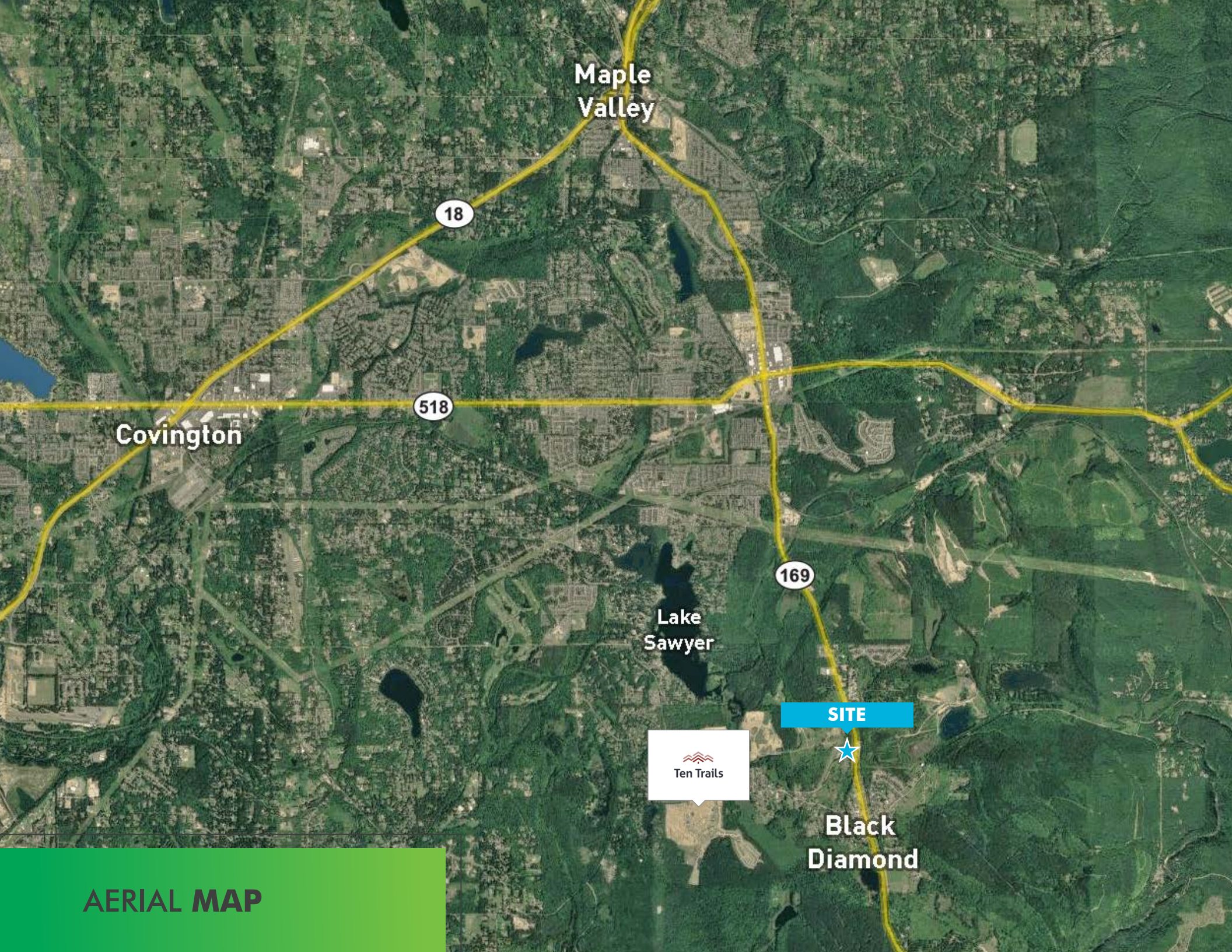
PROPERTY INFO

- Building Size: ±3,076 SF
- Lot Size: ±36,000 SF
- Rate: \$18.00 PSF + NNN's (\$5.00 PSF)
- Stand-alone building with frontage on Hwy 169 (3rd Ave)
- Former bank with two car drive-thru
- ±17 parking spaces
- Zoned Community Commercial (CC): City of Black Diamond
- Average traffic counts on 3rd Avenue: 11,591 CPD



FLOOR PLAN





Maple Valley

18

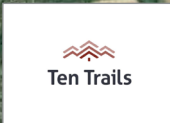
518

Covington

Lake Sawyer

169

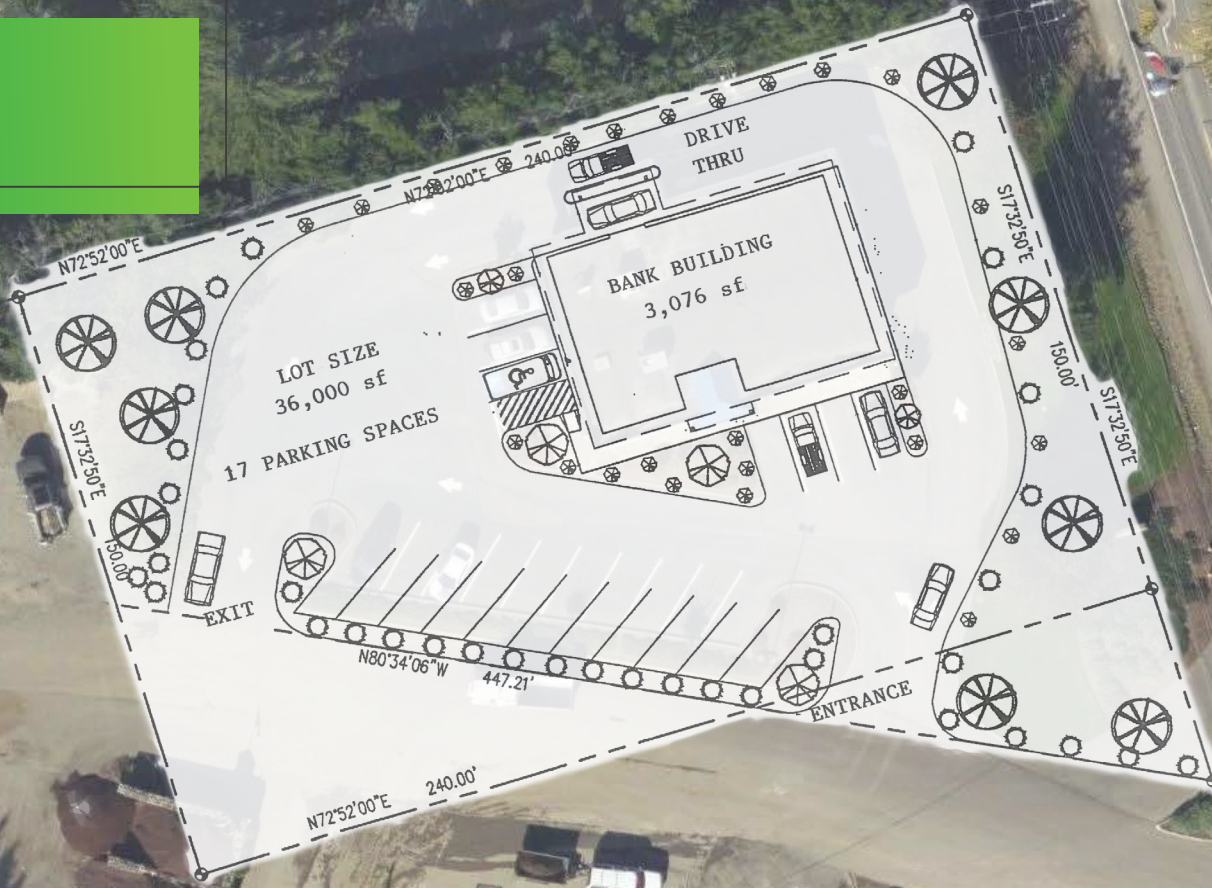
SITE



Black Diamond

AERIAL MAP

SITE PLAN



TERESA PATTON

Vice President
+1 253 596 0043
teresa.patton@cbre.com

DON MOODY

First Vice President
+1 253 596 0045
don.moody@cbre.com

MICHAEL OTA

Associate
+1 253 596 0031
michael.ota@cbre.com

ZACHARY OTA

Associate
+1 253 596 0032
zachary.ota@cbre.com

© 2019 CBRE, Inc. All rights reserved. This information has been obtained from sources believed reliable, but has not been verified for accuracy or completeness. You should conduct a careful, independent investigation of the property and verify all information. Any reliance on this information is solely at your own risk. CBRE and the CBRE logo are service marks of CBRE, Inc. All other marks displayed on this document are the property of their respective owners, and the use of such logos does not imply any affiliation with or endorsement of CBRE. Photos herein are the property of their respective owners. Use of these images without the express written consent of the owner is prohibited. rb 01.02.20

