



FOR LEASE
18115 68th Avenue NE
Kenmore, Washington



FLYWAY RETAIL

First Western Properties, Inc. | 425.822.5522 | fwp-inc.com
11621 97th Lane NE, Kirkland, Washington 98034

FLYWAY is downtown Kenmore's newest mixed-use development, forming the city's retail, dining, and entertainment hub. The Flyway features high-end residential units and 5,571 SF of Class A commercial space. It is located within walking distance to the city's new Town Green, the Seaplane Kitchen & Bar, EvergreenHealth Primary Care, and more than 300 new apartment homes. The commercial space features 11'-14' ceilings, a landscaped breezeway, and dedicated outdoor seating. Brand new construction recently completed!

F L Y W A Y
RETAIL + LIVING

18115 68TH AVENUE NE

750 SF \$45.00 PSF NNN

678 SF \$45.00 PSF NNN



The Hangar



Lake Washington Physical Therapy



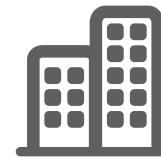
EvergreenHealth Primary Care



Population



Average HH Income

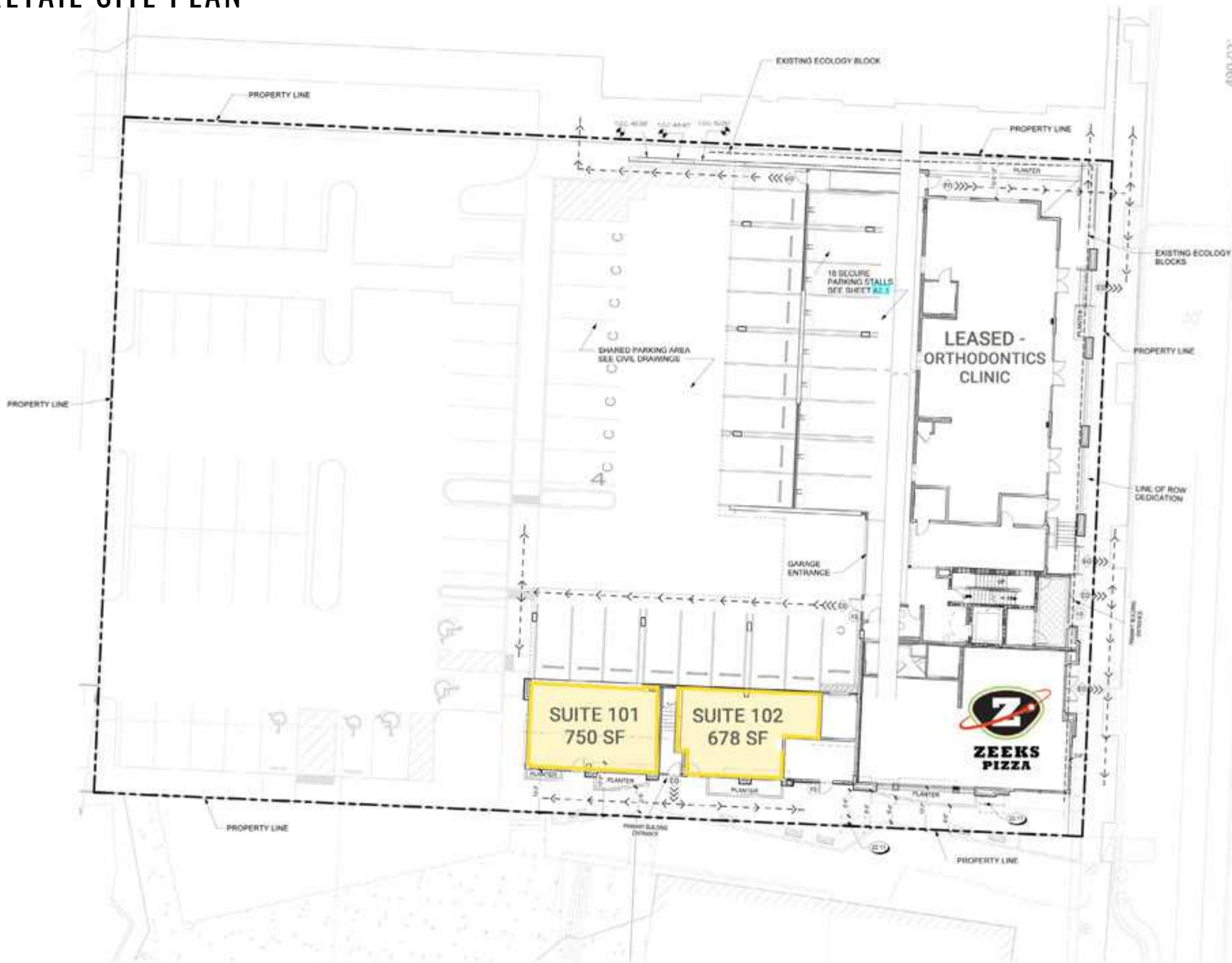


Daytime Population

Regis - 2020

	Population	Average HH Income	Daytime Population
Mile 1	13,322	\$131,101	3,100
Mile 3	107,792	\$133,029	18,540
Mile 5	342,167	\$120,812	121,918

RETAIL SITE PLAN



1 SITE PLAN
3/32" = 1'-0"

DOWNTOWN KENMORE PLAN





Central to Seattle
and the Eastside



Moments from
Kenmore Air



50,494 ADT
NE Bothell Way



0.4 Miles to Burke-
Gilman Trail

KIRKLAND | TACOMA | PORTLAND | SEATTLE



RELATIONSHIP FOCUSED. RESULTS DRIVEN.

ANGELA OLIVERI

425.250.3281
aoliveri@fwp-inc.com



First Western Properties, Inc. | 425.822.5522
11621 97th Lane NE Kirkland, WA 98034 | fwp-inc.com

© First Western Properties, Inc. DISCLAIMER: The above information has been secured from sources believed to be reliable, however, no representations are made to its accuracy. Prospective tenants or buyers should consult their professional advisors and conduct their own independent investigation. Properties are subject to change in price and/or availability without notice.