



BLOCK D

MAKERS QUARTER™



UNDER CONSTRUCTION (265 UNITS)

CITY COLLEGE

BROADWAY



BLOCK D
GROUND BROKEN
DELIVERS APRIL 2018

BREAKING GROUND
FALL 2017
(295 UNITS)

IDEA1



COMPLETED

15TH ST

FST

EAST VILLAGE GREEN

MAKERS QUARTER



VIEW FROM THE 5TH FLOOR

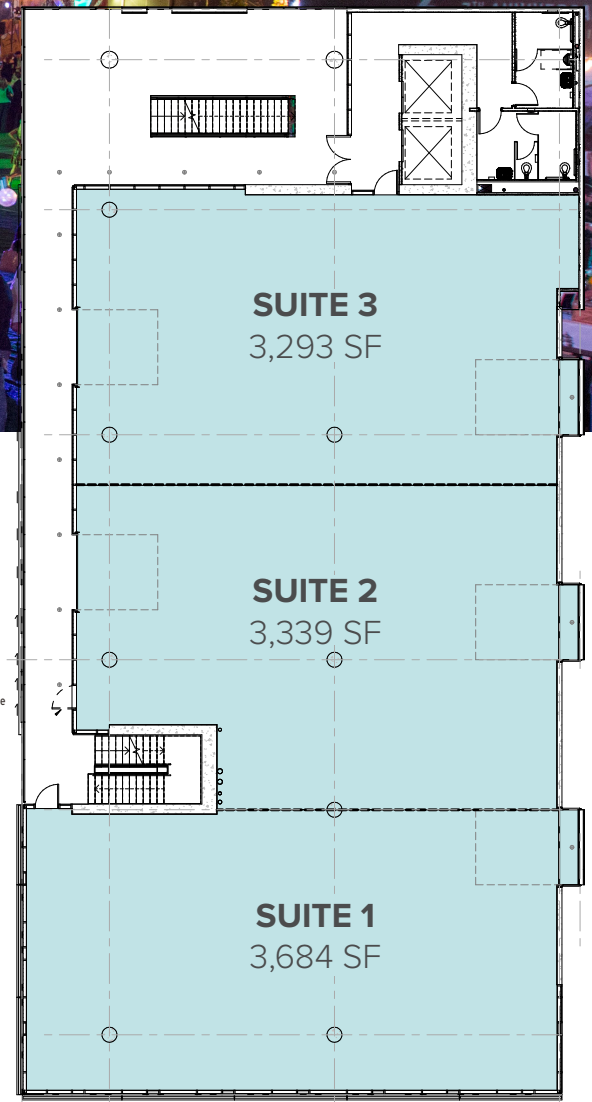
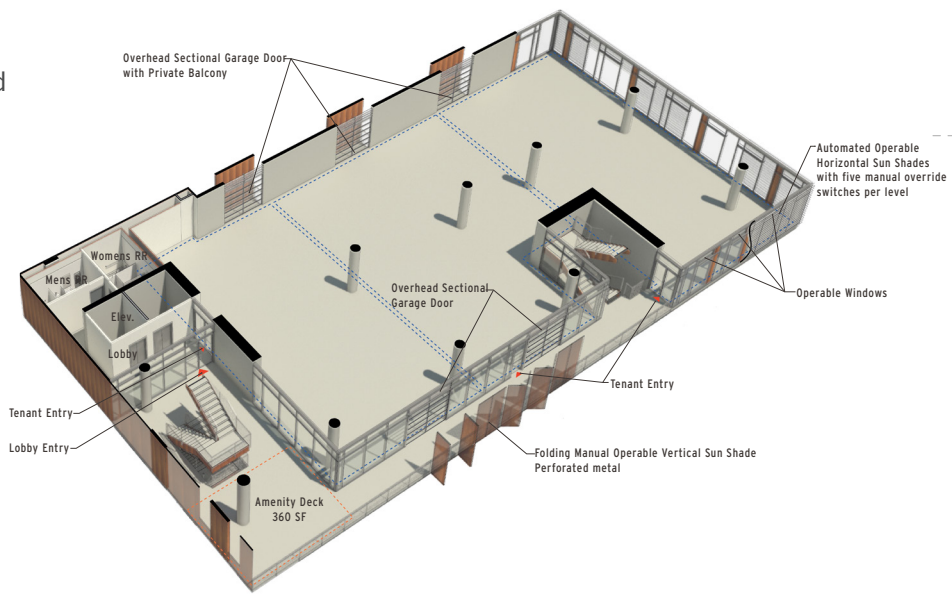
BLOCK D FEATURES

- Efficient collaborative design
- A 50,000 square foot collaborative office hub with efficient 10,000 square foot floor plates, with multiple balconies and outdoor circulation
- The building features floor to ceiling glass with great natural daylight and opportunities for cross ventilation as well as city and partial views of San Diego Bay
- The poured concrete structure, historically influenced façade and roll up doors give the project an authentic industrial feel
- Up to 40,000 square feet is available to a single user with freeway visible building top signage
- 12 foot slab-to-slab height on floors 3-5
- Floor plates divisible to approximately 3,200 SF



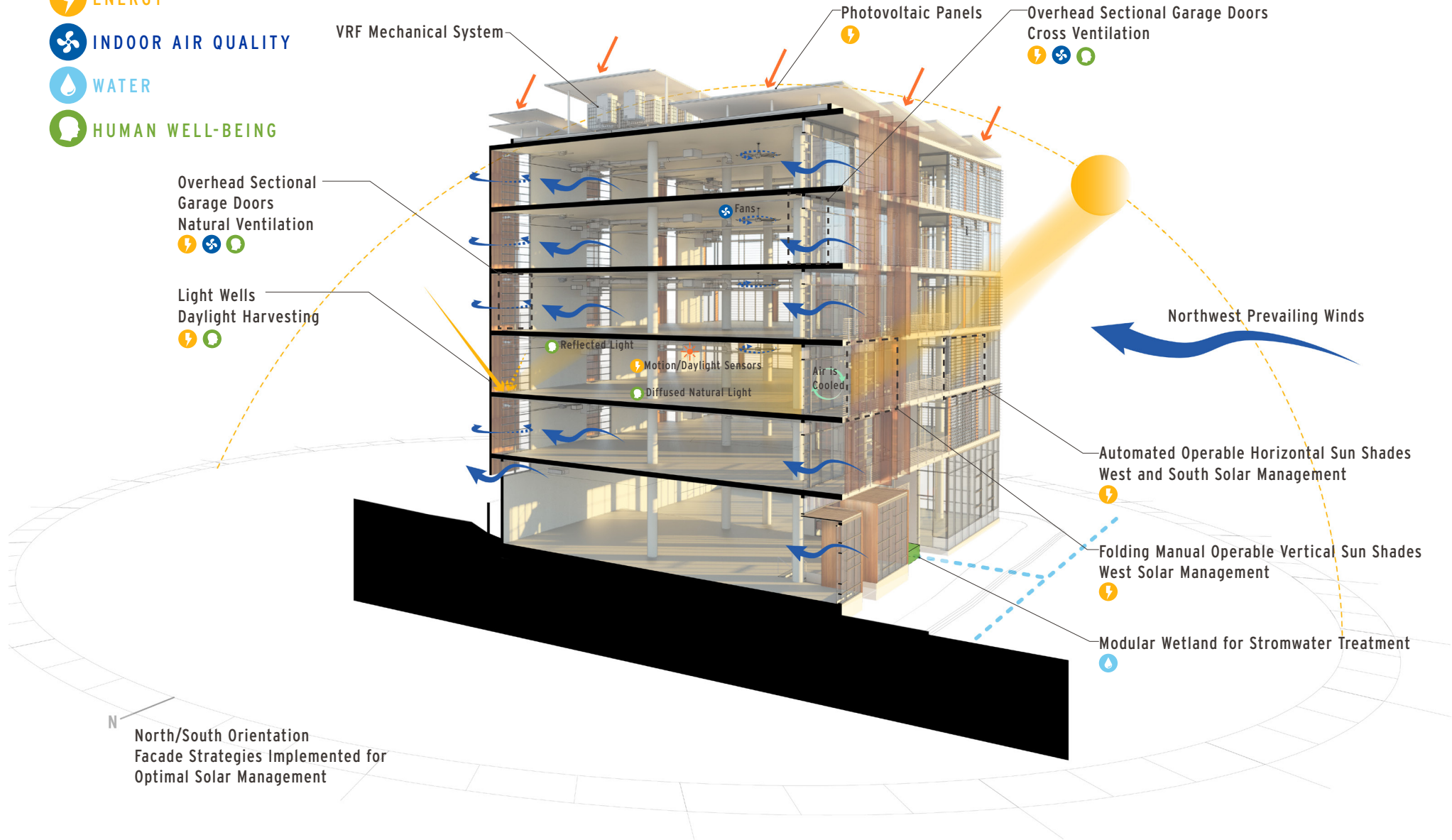
CORE CONFIGURATION

- The smaller floor plates are divisible to 2,560 square feet and also work well for innovation incubators
- Creative and open spaces offer users ultimate flexibility between 2,560 and 40,000 square feet
- Multiple opportunities for roll-up doors and outdoor amenity spaces



VENTILATION & EFFICIENCY

-  ENERGY
-  INDOOR AIR QUALITY
-  WATER
-  HUMAN WELL-BEING





Coffee

Art Gallery



M

For more information, please contact:

MATT CARLSON
+1 858 546 2636

matt.carlson@cbre.com
CA Lic. 01459868

RYAN GRANT
+1 619 696 8354

ryan.grant@cbre.com
CA Lic. 01813531



makersquarter.com



facebook.com/MakersQuarter



makersquarter.com

CBRE

350 Tenth Avenue, Suite 800
San Diego, CA 92101
www.cbre.com