

**LEASE****OFFICE****MEDICAL****CARMEL MERIDIAN STREET CORRIDOR // 3,321 SF MEDICAL SUITE****LEASE RATE**

\$25.00 SF/YR/ MG

**AVAILABLE SF**

3,321 SF

- + Two-tenant medical building (former dermatologist office)
- + Good circular plan configuration with high-end finishes
- + Five exam/procedure rooms
- + Located in Meridian corridor. Easy access. Convenient parking
- + Nice, well-maintained property (onsite owner)

**PaulDickTeam.com**

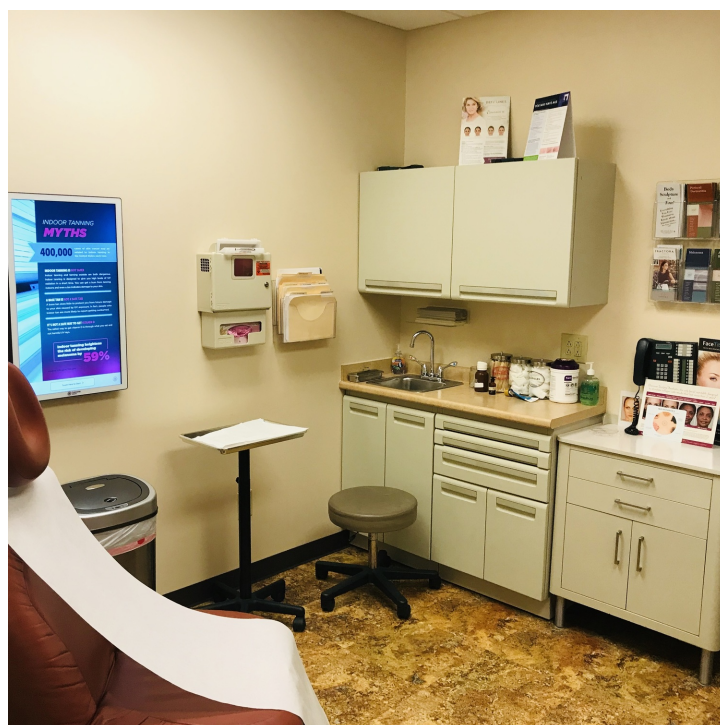
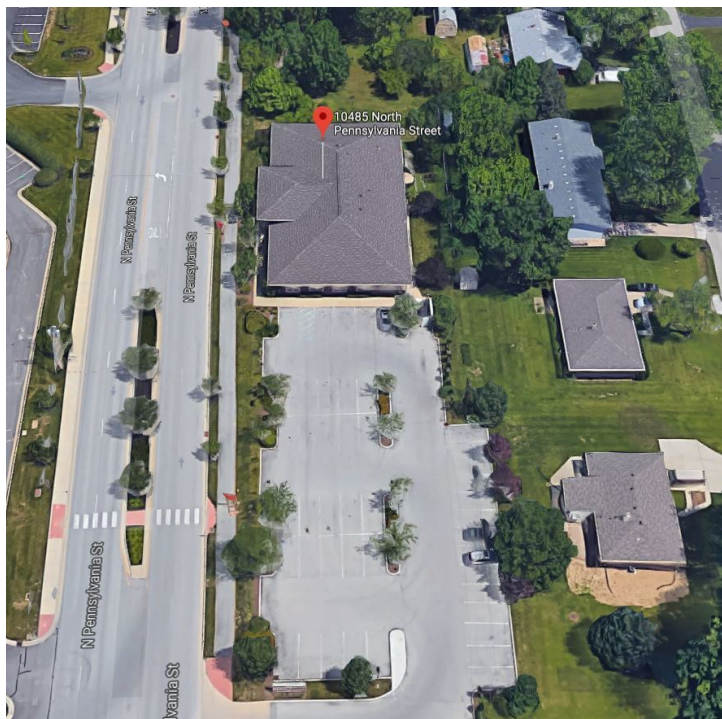
in #growIndiana

**KEVIN DICK**  
Senior Vice President  
O 317.663.6544  
C 317.213.6692  
kevin.dick@rcre.com

**NICHOLAS R. MILLER**  
Associate  
O 317.663.6085  
C 317.517.2310  
nicholas.miller@rcre.com

# 10485 N. PENNSYLVANIA STREET

INDIANAPOLIS, IN 46280



# 10485 N. PENNSYLVANIA STREET

INDIANAPOLIS, IN 46280

DEMOGRAPHICS	1 MILE	3 MILES	5 MILES
Total Households	1,513	20,491	63,665
Total Population	3,896	46,675	151,636
Average HH Income	\$123,101	\$101,556	\$97,342

Google

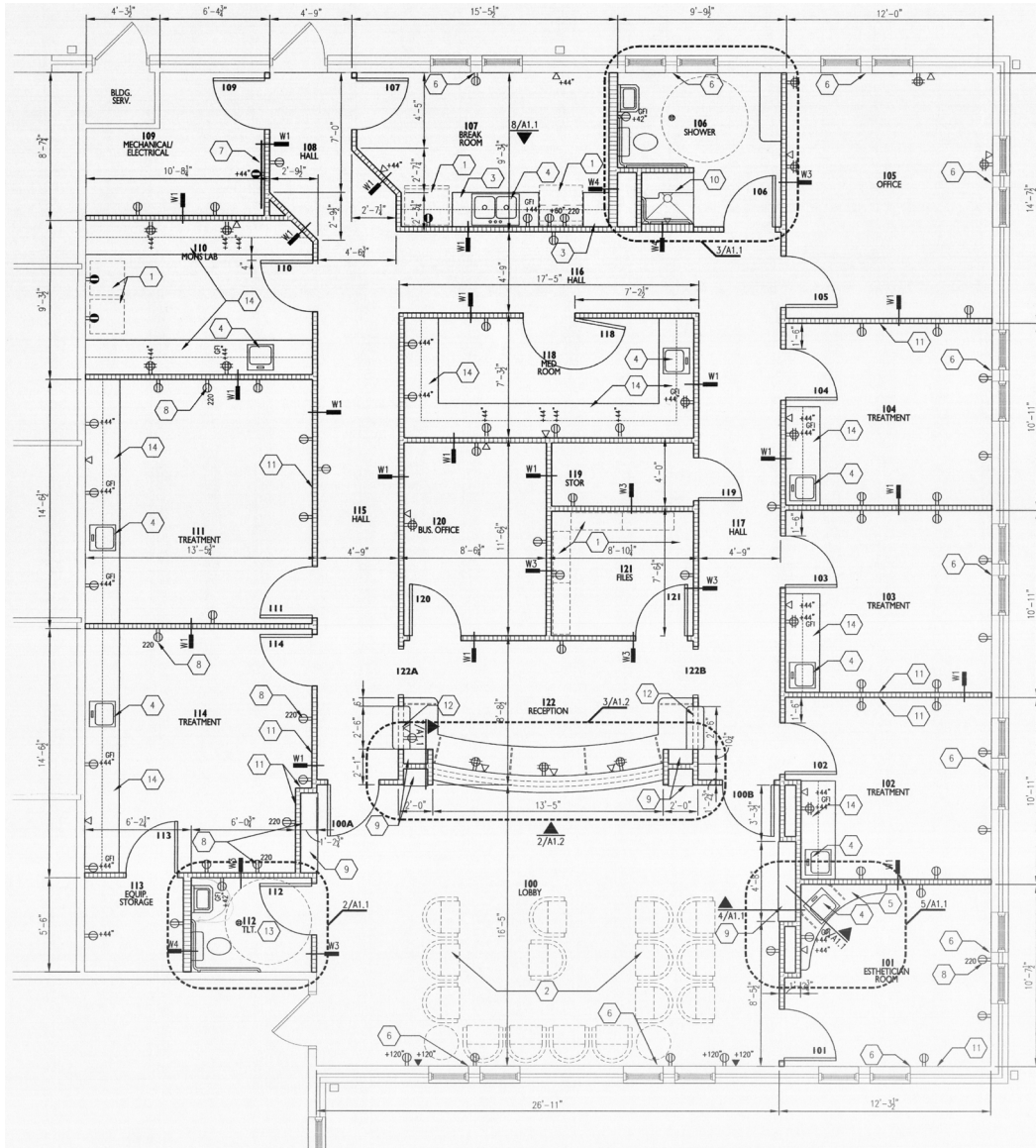
Map data ©2020 Google Imagery ©2020 , IndianaMap Framework Data, Landsat / Copernicus, Maxar Technologies, USDA Farm Service Agency

LEASE

OFFICE

MEDICAL

PaulDickTeam.com



Suite 150 // 3,321 SF

