

RETAIL FOR LEASE

12240 Coursey Blvd, Baton Rouge, LA

PROPERTY HIGHLIGHTS:

- End Cap Retail Space
- Suite J & K
- Size: 2,500 Sq.Ft.
- Currently Occupied by Dry Cleaner Business
- Available December 1, 2011
- Located in Lake Park Shopping Center
- Conveniently Located on Coursey Blvd
between S. Sherwood Forest Blvd and
Stumberg Lane
- Monthly Rent: \$2,916.67
- CAM: \$2.00 per SF



FOR MORE INFORMATION, CONTACT:

Lease Rate: \$14.00 per SF

Steve Legendre, CCIM

225.907.3783

stevel@beaubox.com

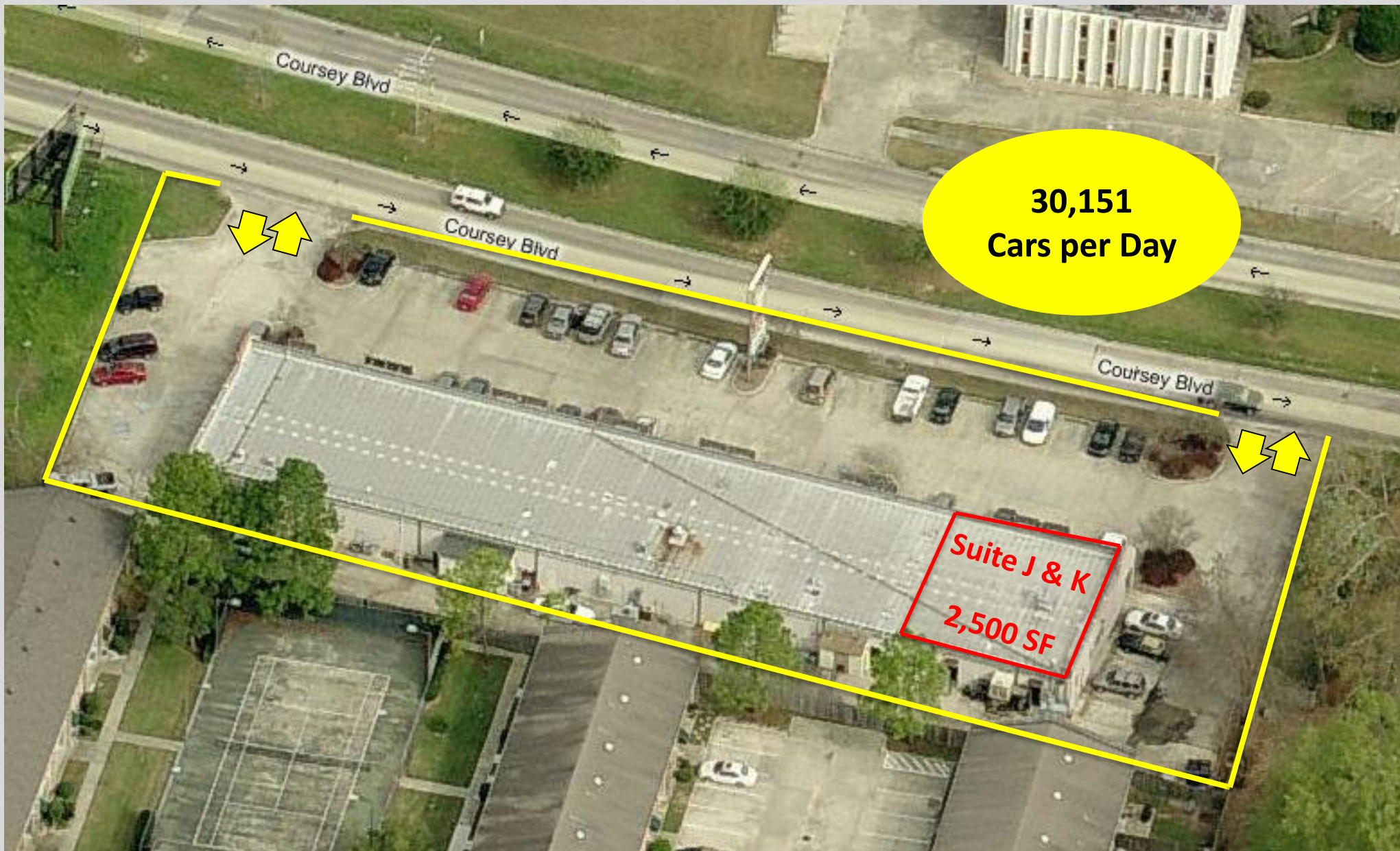
JOEY CANELLA

225.907.6232

jcanella@beaubox.com

Beau Box Commercial Real Estate • 8710 Jefferson Highway • Baton Rouge, LA 70809
225.237.3343 OFFICE • 225.237.3344 FAX • www.BEAUXBOX.com

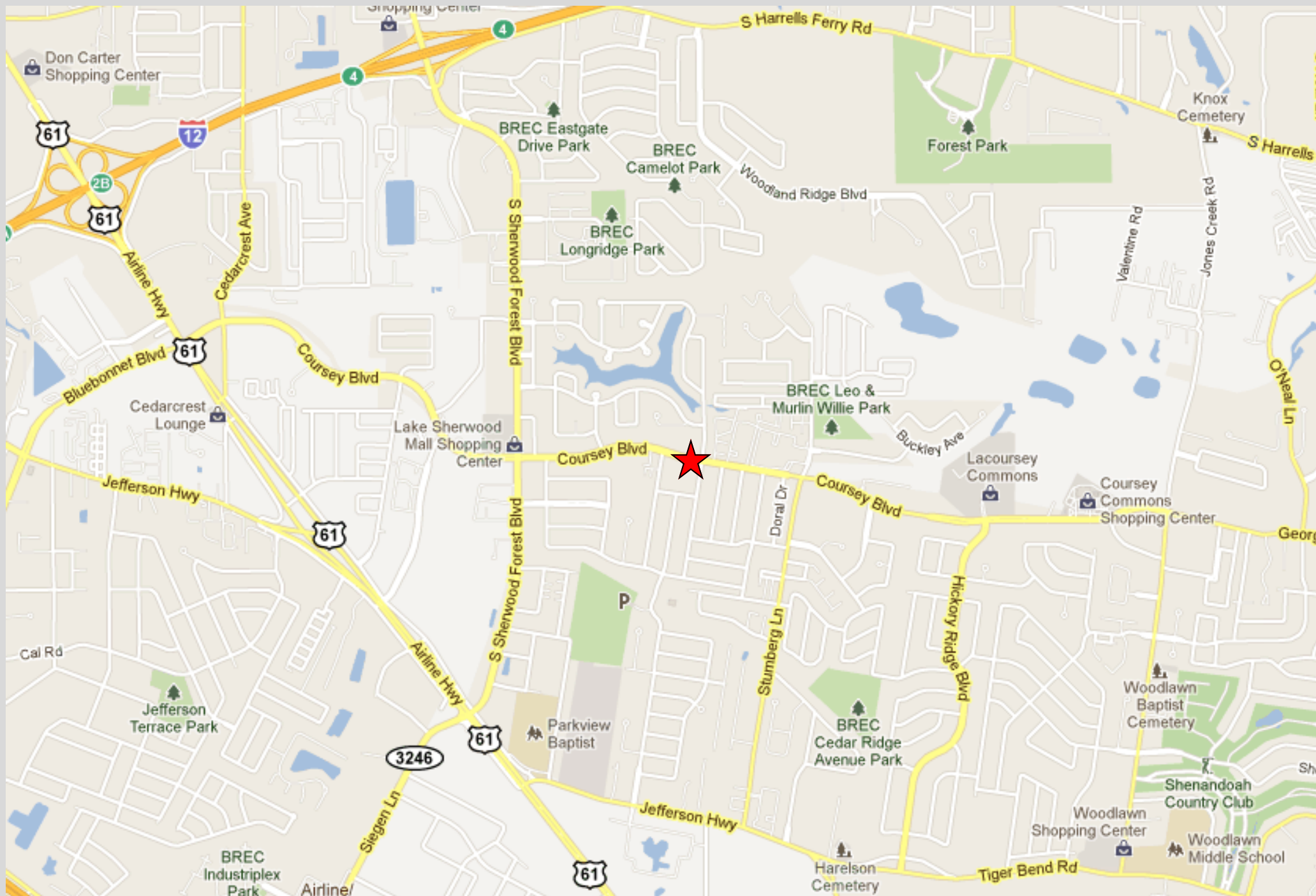
This information has been secured from sources we believe to be reliable, but we make no representations or warranties, expressed or implied, as to the accuracy of the information. References to square footage or age are approximate. Buyer must verify the information and bears all risk for any inaccuracies. ©Beau Box Commercial Real Estate



STEVE LEGENDRE 225.907.3783

JOEY CANELLA 225.907.6232

Beau Box Commercial Real Estate • 8710 Jefferson Highway • Baton Rouge, LA 70809
225.237.3343 OFFICE • 225.237.3344 FAX • www.BEAUXBOX.com



STEVE LEGENDRE 225.907.3783

JOEY CANELLA 225.907.6232

Beau Box Commercial Real Estate • 8710 Jefferson Highway • Baton Rouge, LA 70809
225.237.3343 OFFICE • 225.237.3344 FAX • www.BEAUXBOX.com