

1645 Dutch Fork Road

Irmo, South Carolina

For more information:

Tombo Milliken

+1 803 744 9852
tombo.milliken@naicolumbia.com

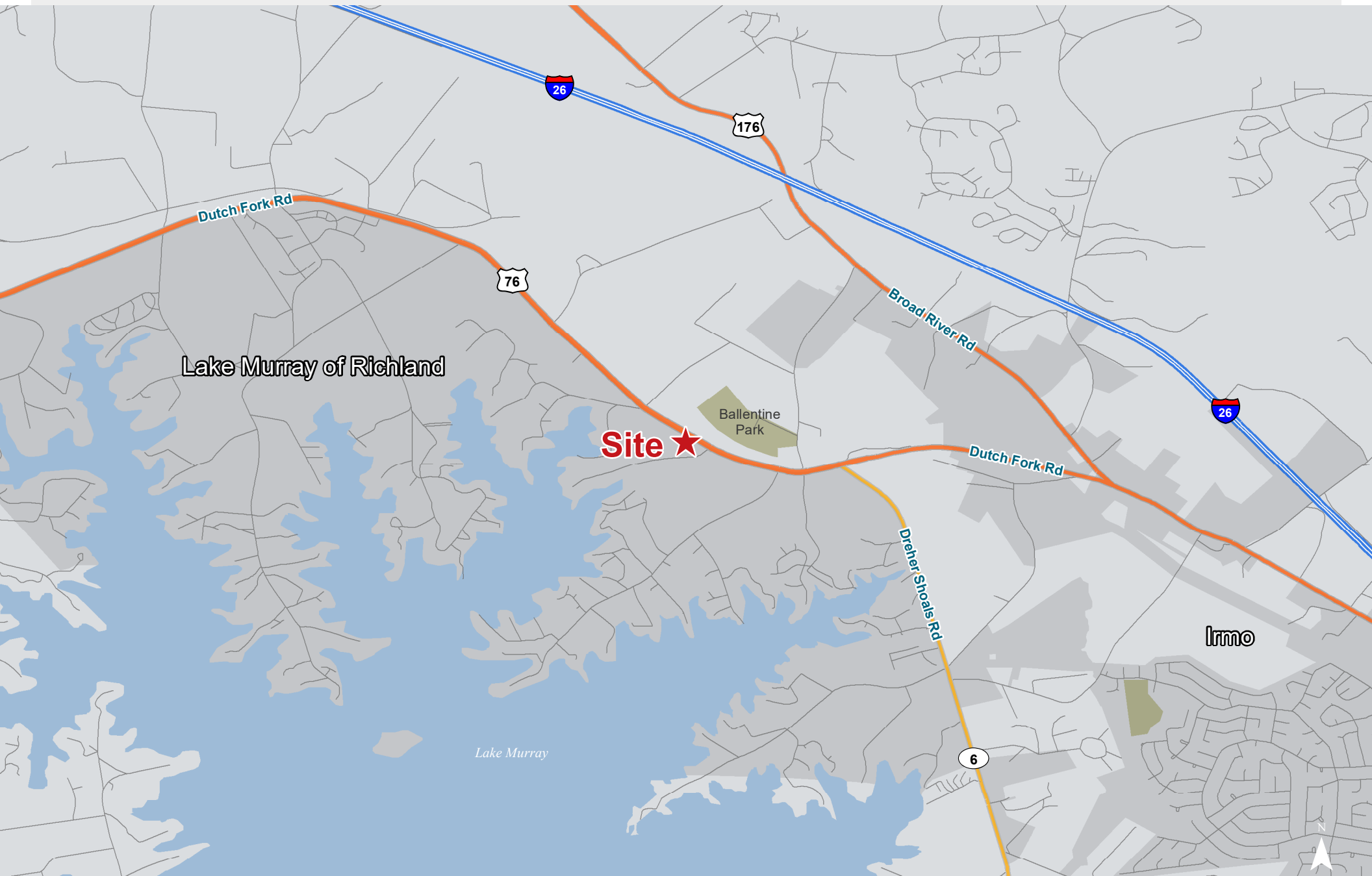
Tom Milliken

+1 803 744 9837
tmilliken@naicolumbia.com

Property Features

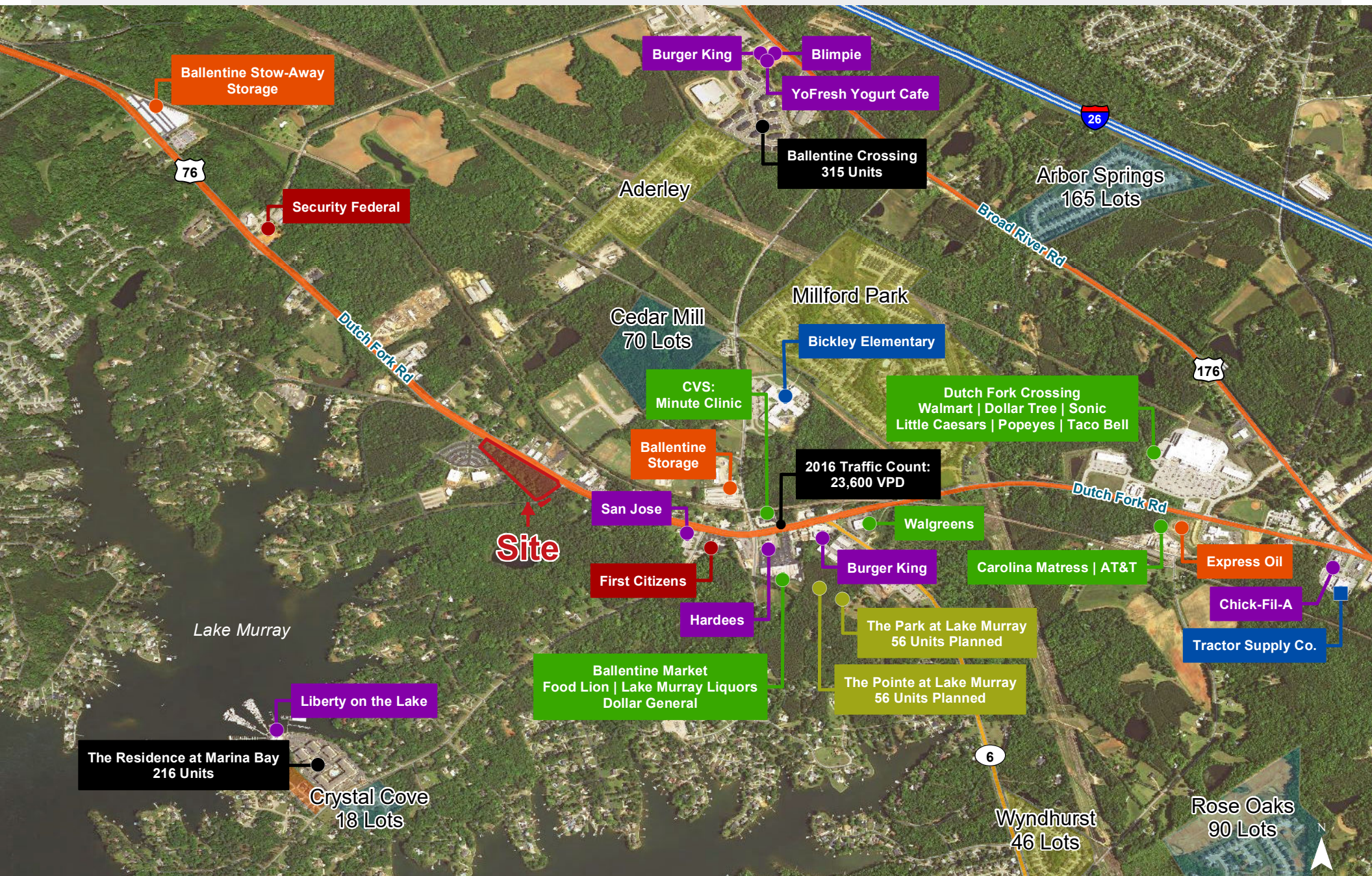
- ±5.38 Acres for sale in Irmo, SC
- ±970 feet of road frontage on Dutch Fork Road
- Water and sewer in area
- Parcel #: R02411-01-03
- Primary Zoning: RU, Rural District (Richland County)
- Secondary Zoning: RS-LD Residential, Single-Family - Low Density District (Richland County)
- Traffic Count: 23,600 VPD (Station 145)
- Sales Price: \$672,500

Location



Map Updated: Thursday, October 19, 2017. This information submitted is not guaranteed. Although obtained from reliable sources, all information should be confirmed prior to use or reliance upon the information. This document may not be reproduced in whole or in part without the express written consent of NAI Avant.

Points of Interest



Map Updated: Thursday, October 19, 2017. This information submitted is not guaranteed. Although obtained from reliable sources, all information should be confirmed prior to use or reliance upon the information. This document may not be reproduced in whole or in part without the express written consent of NAI Avant.



Map Updated: Thursday, October 19, 2017. This information submitted is not guaranteed. Although obtained from reliable sources, all information should be confirmed prior to use or reliance upon the information. This document may not be reproduced in whole or in part without the express written consent of NAI Avant.

Topographical Map: 2' Contours



Map Updated: Thursday, October 19, 2017. This information submitted is not guaranteed. Although obtained from reliable sources, all information should be confirmed prior to use or reliance upon the information. This document may not be reproduced in whole or in part without the express written consent of NAI Avant.

Topographical Map: 10' Contours



Map Updated: Thursday, October 19, 2017. This information submitted is not guaranteed. Although obtained from reliable sources, all information should be confirmed prior to use or reliance upon the information. This document may not be reproduced in whole or in part without the express written consent of NAI Avant.

FEMA National Flood Hazard Layer



Map Updated: Thursday, October 19, 2017. This information submitted is not guaranteed. Although obtained from reliable sources, all information should be confirmed prior to use or reliance upon the information. This document may not be reproduced in whole or in part without the express written consent of NAI Avant.

National Wetlands Inventory



Map Updated: Thursday, October 19, 2017. This information submitted is not guaranteed. Although obtained from reliable sources, all information should be confirmed prior to use or reliance upon the information. This document may not be reproduced in whole or in part without the express written consent of NAI Avant.

Soil Survey



Map Updated: Thursday, October 19, 2017. This information submitted is not guaranteed. Although obtained from reliable sources, all information should be confirmed prior to use or reliance upon the information. This document may not be reproduced in whole or in part without the express written consent of NAI Avant.

Map Unit Description (Brief, Generated)

Richland County, South Carolina

[Minor map unit components are excluded from this report]

Map unit: GeB - Georgeville silt loam, 2 to 6 percent slopes

Component: Georgeville (85%)

The Georgeville component makes up 85 percent of the map unit. Slopes are 2 to 6 percent. This component is on interfluvies, piedmonts. The parent material consists of residuum weathered from metavolcanics and/or residuum weathered from metasedimentary rock and/or residuum weathered from slate. Depth to a root restrictive layer is greater than 60 inches. The natural drainage class is well drained. Water movement in the most restrictive layer is moderately high. Available water to a depth of 60 inches is high. Shrink-swell potential is low. This soil is not flooded. It is not ponded. There is no zone of water saturation within a depth of 72 inches. Organic matter content in the surface horizon is about 1 percent. Nonirrigated land capability classification is 2e. This soil does not meet hydric criteria.

Map unit: NaB - Nason silt loam, 2 to 6 percent slopes

Component: Nason (100%)

The Nason component makes up 100 percent of the map unit. Slopes are 2 to 6 percent. This component is on hillslopes on uplands. The parent material consists of clayey residuum weathered from slate. Depth to a root restrictive layer, bedrock, paralithic, is 40 to 60 inches. The natural drainage class is well drained. Water movement in the most restrictive layer is moderately high. Available water to a depth of 60 inches is moderate. Shrink-swell potential is moderate. This soil is not flooded. It is not ponded. There is no zone of water saturation within a depth of 72 inches. Organic matter content in the surface horizon is about 2 percent. Nonirrigated land capability classification is 2e. This soil does not meet hydric criteria.

Map Unit Description (Brief, Generated)

Richland County, South Carolina

Map unit: NaC - Nason silt loam, 6 to 10 percent slopes

Component: Nason (100%)

The Nason component makes up 100 percent of the map unit. Slopes are 6 to 10 percent. This component is on hillslopes on uplands. The parent material consists of clayey residuum weathered from slate. Depth to a root restrictive layer, bedrock, paralithic, is 40 to 60 inches. The natural drainage class is well drained. Water movement in the most restrictive layer is moderately high. Available water to a depth of 60 inches is moderate. Shrink-swell potential is moderate. This soil is not flooded. It is not ponded. There is no zone of water saturation within a depth of 72 inches. Organic matter content in the surface horizon is about 2 percent. Nonirrigated land capability classification is 3e. This soil does not meet hydric criteria.

Map unit: OaB - Orange loam, 0 to 4 percent slopes

Component: Orange (100%)

The Orange component makes up 100 percent of the map unit. Slopes are 0 to 4 percent. This component is on marine terraces on coastal plains. The parent material consists of clayey residuum weathered from slate. Depth to a root restrictive layer, bedrock, lithic, is 40 to 60 inches. The natural drainage class is somewhat poorly drained. Water movement in the most restrictive layer is moderately high. Available water to a depth of 60 inches is low. Shrink-swell potential is low. This soil is not flooded. It is not ponded. A seasonal zone of water saturation is at 12 inches during January, February, March, December. Organic matter content in the surface horizon is about 2 percent. Nonirrigated land capability classification is 3e. This soil does not meet hydric criteria.