

FULL BUILDING AVAILABLE OR DIVISIBLE

MODERN OFFICE FOR LEASE

1225 & 1229 KING STREET | OLD TOWN, ALEXANDRIA



Presented by:

Stephen Beggs
Mike Porterfield

703.836.6555 x102 | steve@tartanproperties.com
703.836.6555 x101 | mike@tartanproperties.com

TARTAN
PROPERTIES

EXECUTIVE SUMMARY



OFFERING SUMMARY

Parking: 11 Off Street - Reserved for 1229 King Street

Cross Street: N. Payne Street

Available Date: November 1, 2019

PROPERTY OVERVIEW

Here is a unique opportunity to rent in a boutique, modern building in the heart of Old Town. The two floors of office space are elevator-served. Your office will now be right in the middle of the action of Old Town with unlimited dining and shopping options and only a four block walk to King Street Metro. The high visibility, corner location on King Street is an ideal corporate headquarters. Located near Amazon HQ2 and Virginia Tech's Innovation Campus and the Potomac River, and the newly created Waterfront Park.

AVAILABLE OPTIONS

**1225 King St. provides the option for 1 small tenants with private elevator service directly into the suite.

**1229 King St., located on the corner, is an obvious option for tenants looking for a noticeable address, the opportunity for building signage, and private onsite parking and anywhere from 2,000 to 11,850 SF.

PROPERTY HIGHLIGHTS



Entrance to 1229 King Street

PROPERTY HIGHLIGHTS



Entrance to 1225 King Street

AVAILABLE SPACES



SUITE	SIZE (SF)	LEASE TYPE	LEASE RATE	DESCRIPTION
1225 King - Suite 200	800 SF	Full Service	\$34.00 SF/yr	1225 King has one office suite for lease: Suite 200 (800SF). Elevator serves the floor. Building was modernized in 2004. Te
1229 King - 2 suites	2,000 - 11,050 SF	Full Service	\$36.00 SF/yr	1229 King has two floors available for lease which can be leased singly or together: Suite 300 - 5,525 SF total. Can also b

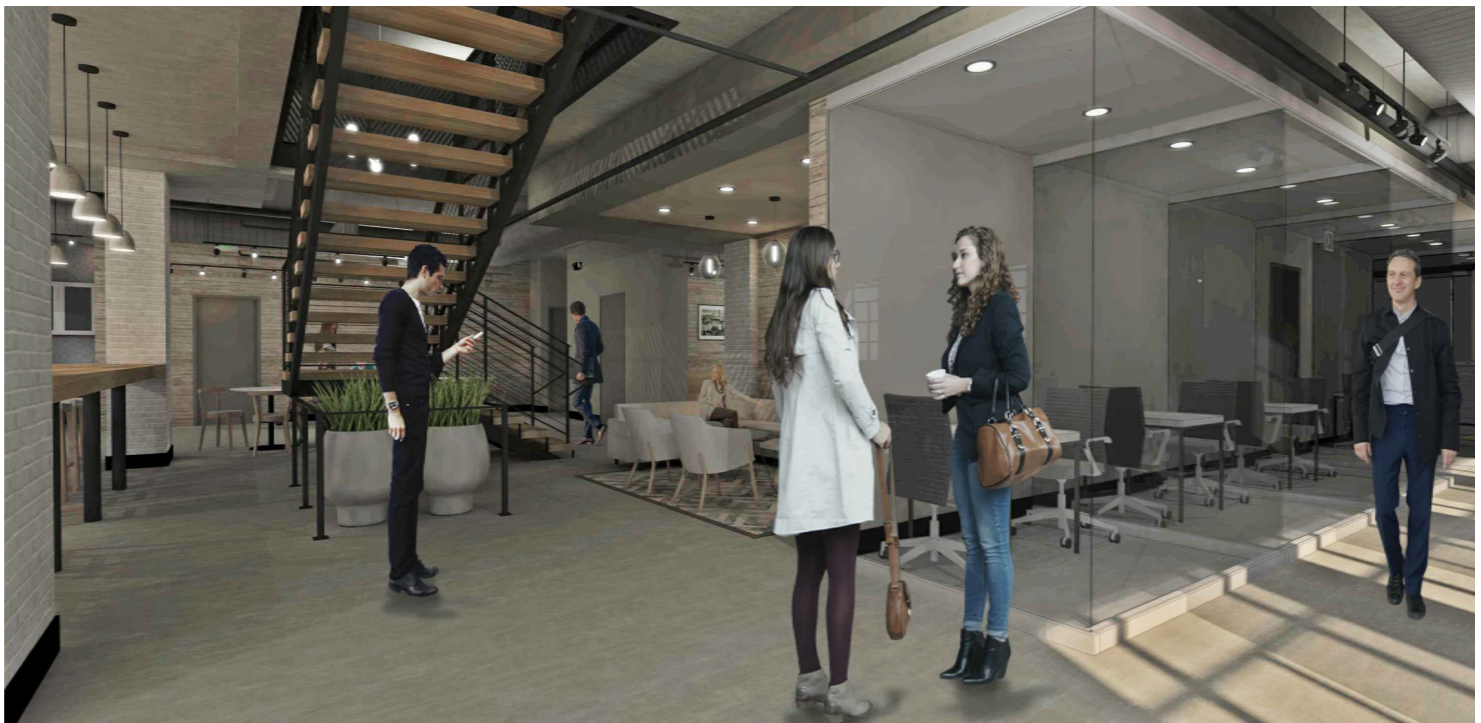
PHOTOS



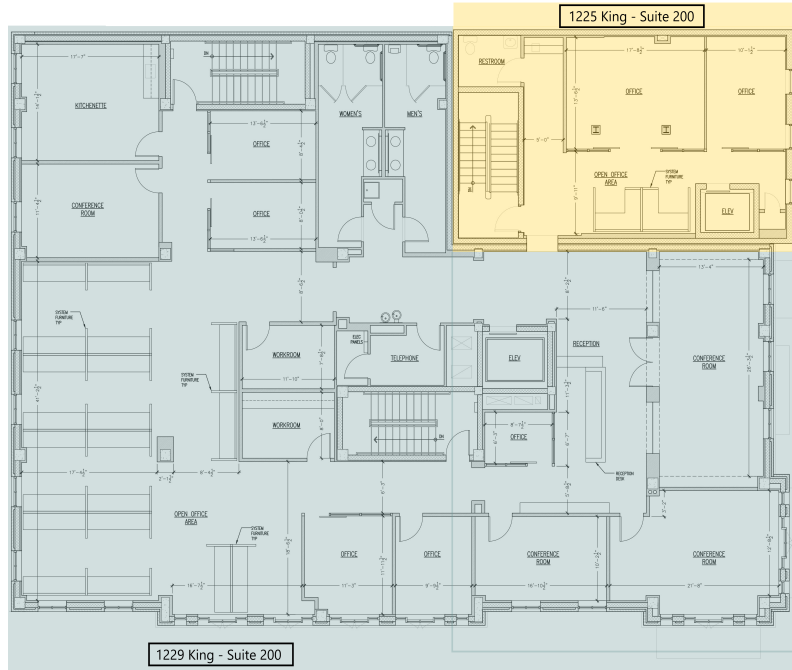
ADDITIONAL PHOTOS



RENDERINGS

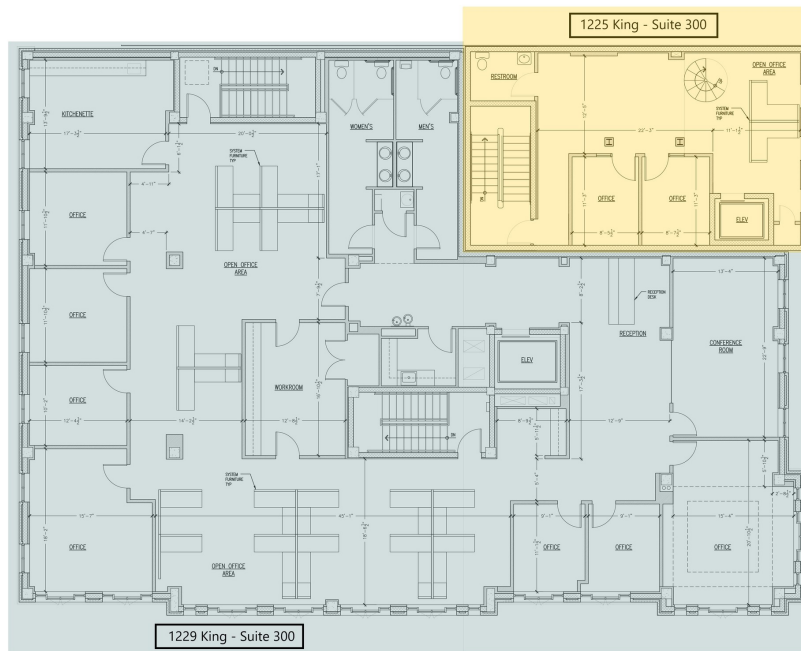


FLOOR PLANS



Suite 200 | Second Floor

SECOND FLOOR PLAN



Suite 300 | Third Floor

THIRD FLOOR PLAN

AMENITIES LOCATION MAP



OLD TOWN ALEXANDRIA

