

**11149 BRADFORD ROAD  
LITTLETON, COLORADO  
OFFICE SUBLEASE**

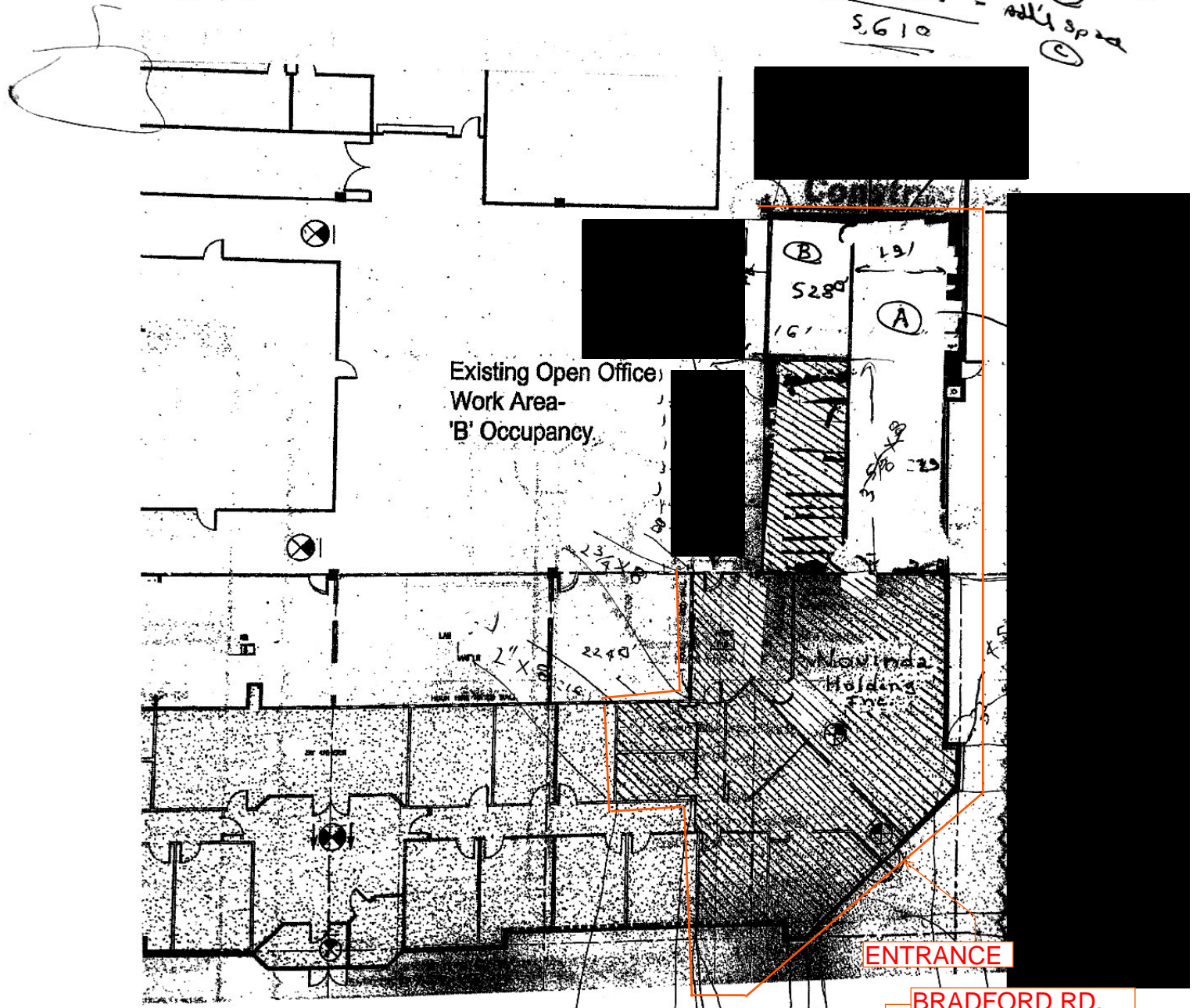
Attachment A

3,072  
~~4,650~~ - Nants New  
4,520 - 1,178 - Room (A)  
4,778 - 528 - Conference Room (B)  
833 - Add'l space (C)  

---

5,610

55K



**ENTRANCE**

**BRADFORD RD.  
(Facing West)**