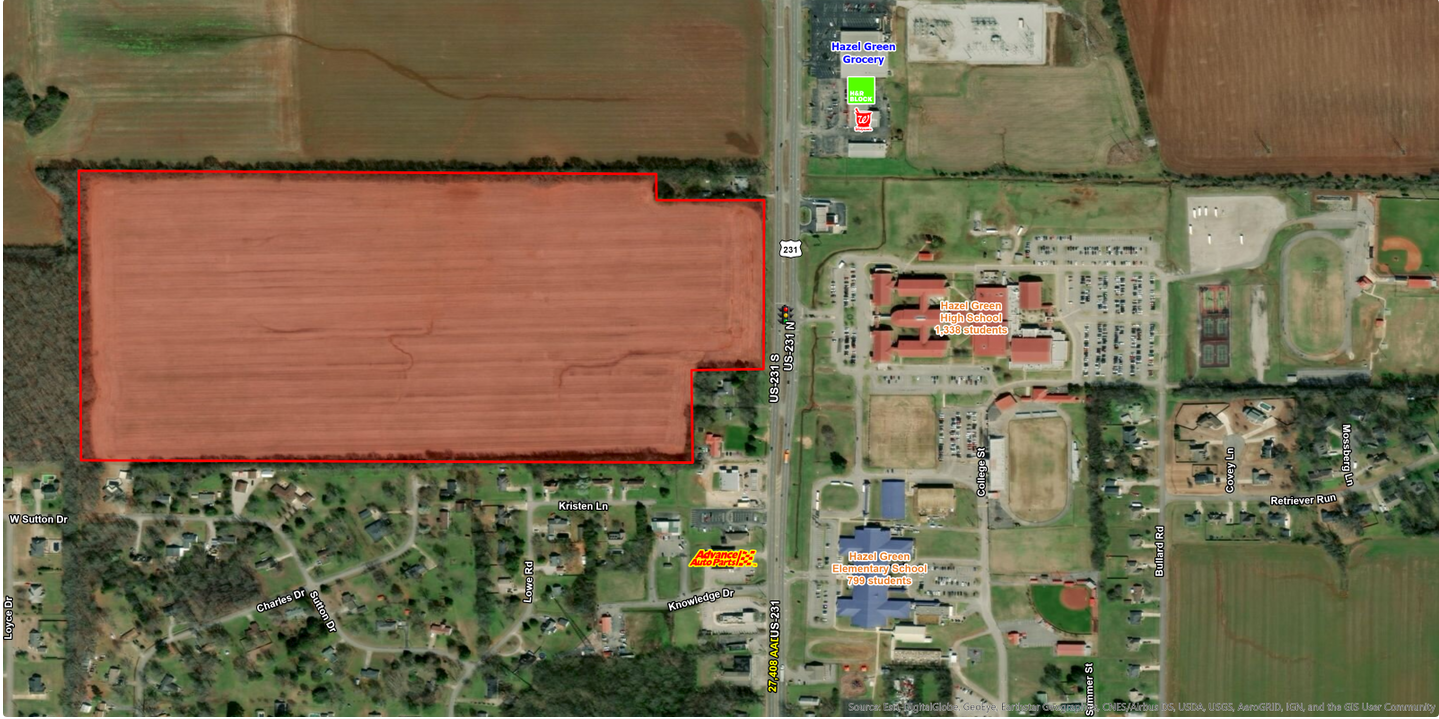


# 76 ACRES HAZEL GREEN

US 231/431 and Charity Lane, Hazel Green, AL 35750

## EXECUTIVE SUMMARY



### LOCATION OVERVIEW

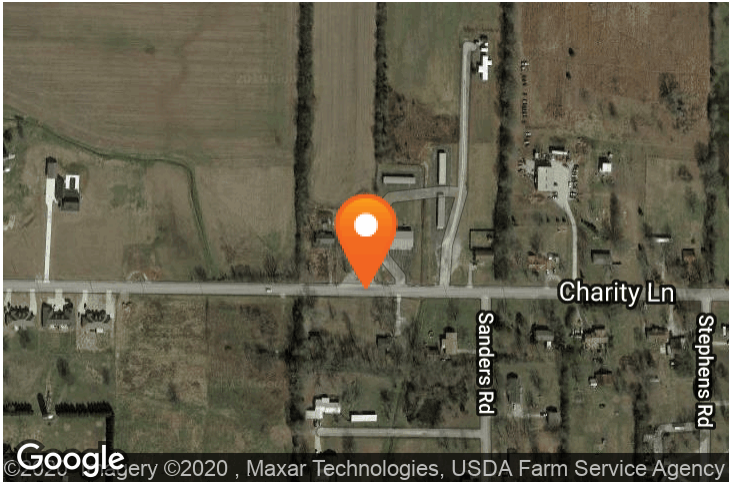
Located directly across from Hazel Green High School with 1,360 students enrolled.

### PROPERTY HIGHLIGHTS

- Positioned just South of new Walmart on the corner of Charity Lane and 231/431.
- 947 feet of frontage on US 231/431.
- Property is in Madison County, no zoning.
- Signalized access.
- Traffic count 20,700 on US 231/431.

### DEMOGRAPHICS

	1 MILE	5 MILES	10 MILES
Population	1,400	7,530	16,197
Households	531	2,764	6,086
Median HH Income (\$)	62,406	58,233	58,002



### EXCLUSIVE AGENT(S)

DON BECK • don.beck@tscg.com • 256.534.7555



# 76 ACRES HAZEL GREEN

US 231/431 and Charity Lane, Hazel Green, AL 35750

## SITE PLAN



EXCLUSIVE AGENT(S)  
DON BECK • don.beck@tscg.com • 256.534.7555





# 76 ACRES HAZEL GREEN

US 231/431 and Charity Lane, Hazel Green, AL 35750

## ADDITIONAL PHOTOS



**EXCLUSIVE AGENT(S)**  
DON BECK • don.beck@tscg.com • 256.534.7555

