

THERE'S LOCATION  
AND THEN THERE'S

607

SIXTH  
AVENUE

LADIES' MILE  
CHELSEA  
NEW YORK, NY



# MAKE A STRONG STATEMENT

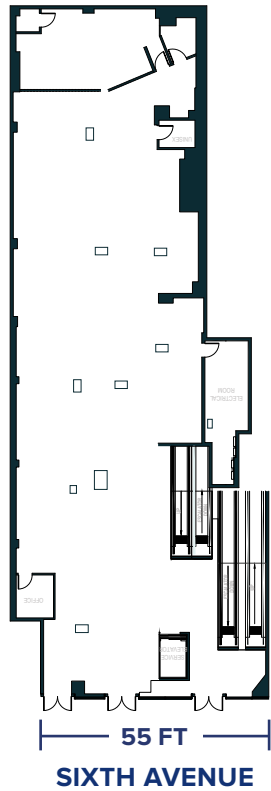
**607** SIXTH AVENUE

a brand showcase with approximately 26,700 SF of high visibility retail space. Located at the base of a luxury residential building, this multi-level big box opportunity situated in the heart of Ladies' Mile offers tremendous, wraparound exposure!

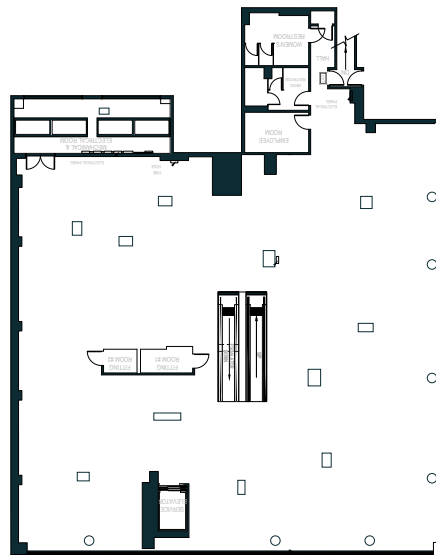


# BRAND SHOWCASE

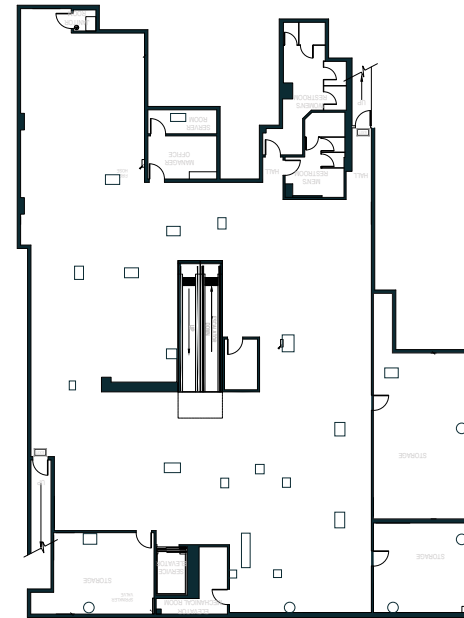
**GROUND FLOOR**



**SECOND FLOOR**



**LOWER LEVEL**



**APPROXIMATE SIZES**

Ground Floor	6,922 SF*
Second Floor	8,858 SF
Lower Level	8,290 SF
<b>Total</b>	<b>26,770 SF</b>

\*Divisible to 1,170 and 5,752 SF

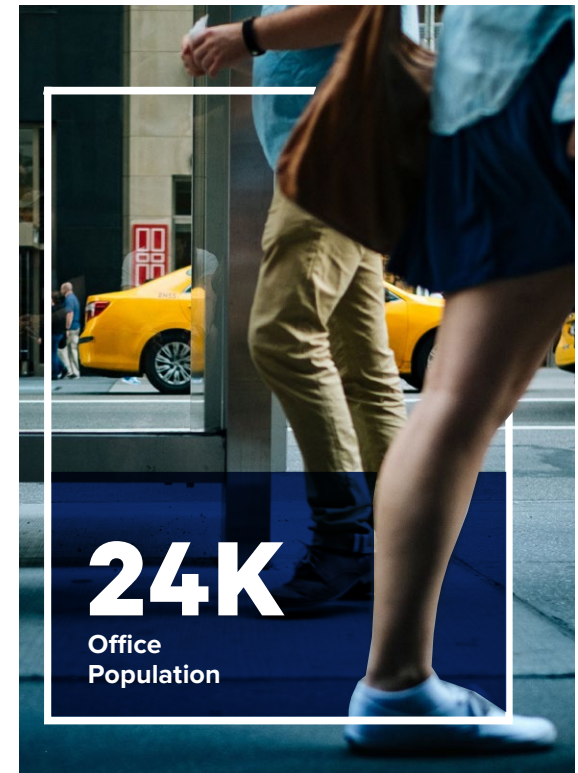
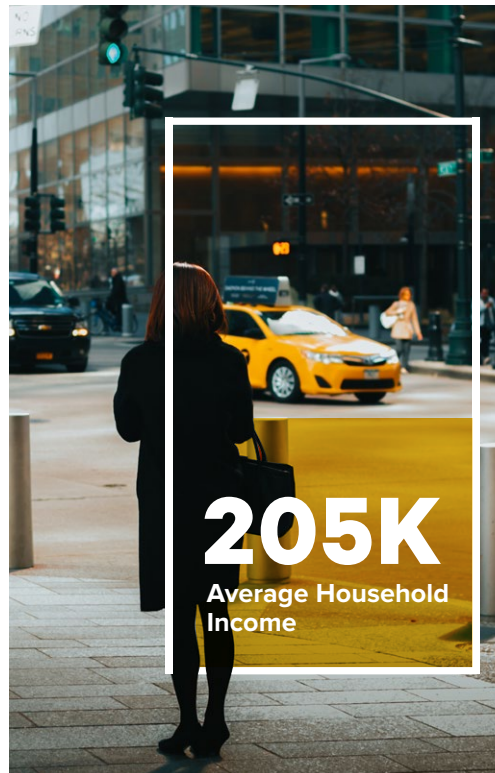
**CEILING HEIGHT**

Ground Floor	13 FT
Second Floor	10 FT
Lower Level	10 FT

**FRONTAGE**

55 FT on Sixth Avenue

# PERFECTLY POSITIONED



# DRIVEN BY CREATIVE ICONIC BRANDS

## NEIGHBORS

Old Navy, Bed Bath & Beyond, The Container Store, T.J. Maxx, Men's Wearhouse, Marshalls, Grimaldi's, Blick Art Materials, Limelight Shops, Staples, Essen, T-Mobile, Peloton, Trader Joe's, Bluemercury, Best Buy and Pret A Manger

Steps from the **1 F M L** subway and **PATH** train lines

## CONTACT EXCLUSIVE AGENTS

**HARRISON ABRAMOWITZ**  
212.372.2467  
habramowitz@ngkf.com

**JASON PRUGER**  
212.372.2092  
jpruger@ngkf.com

**LUCAS KOOYMAN**  
212.372.2384  
lkooyman@ngkf.com

**Newmark Knight Frank**  
NGKF.COM

© 2019 NEWMARK KNIGHT FRANK RETAIL. The information contained herein has been obtained from sources deemed reliable but has not been verified and no guarantee, warranty or representation, either express or implied, is made with respect to such information. Terms of sale or lease and availability are subject to change or withdrawal without notice.

**607 SIXTH AVENUE**

