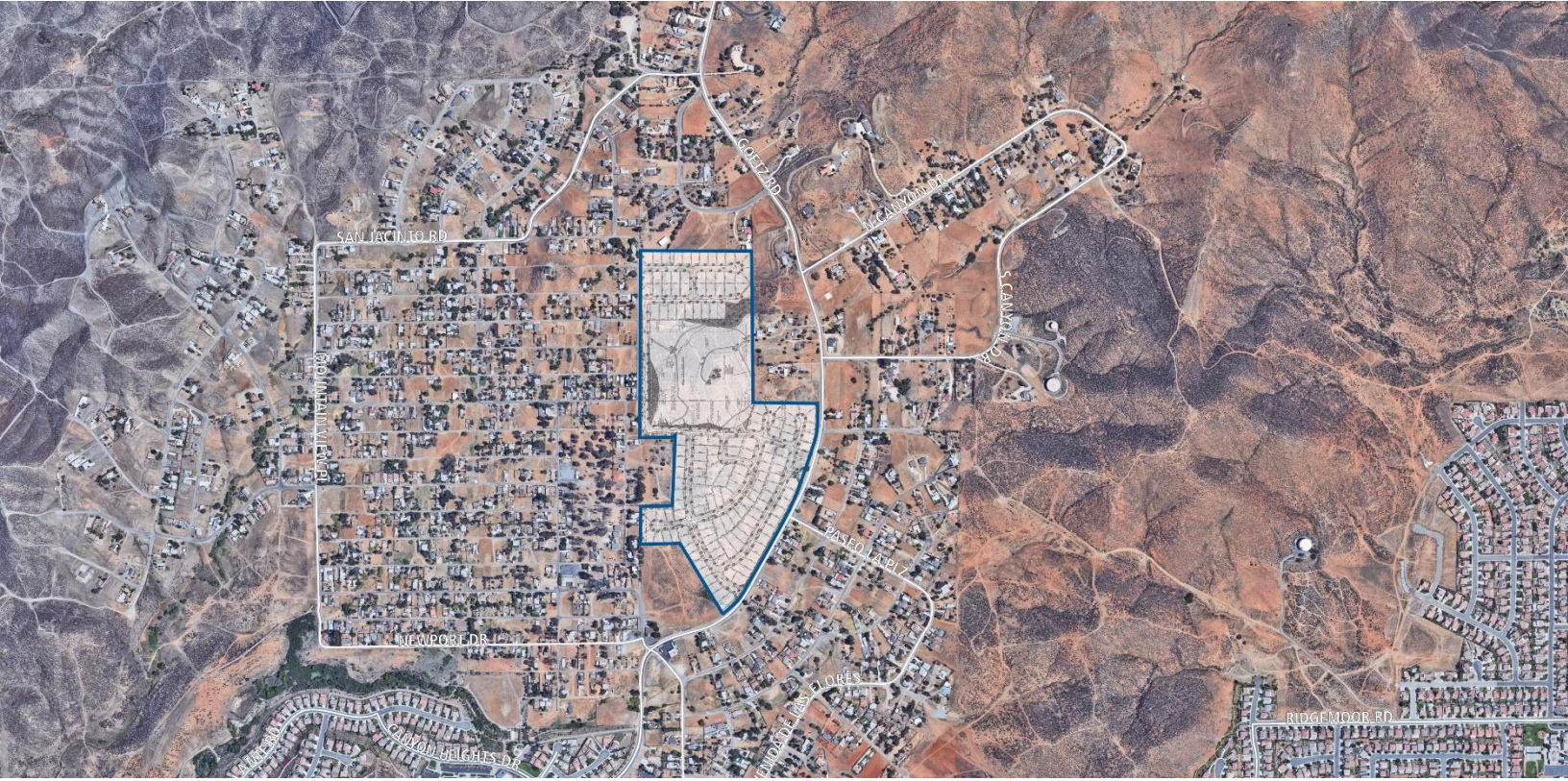


QUAIL HILL

Menifee, CA



PROPERTY OVERVIEW

Quail Hill is located in the City of Menifee, County of Riverside, and consists of 152 single-family residential lots.

- Quail Hill is situated along the west side of Goetz Road, northwest of Newport Road and Murrieta Road. It is located north of Audie Murphy Ranch.
- Quail Hill has Tentative Tract Maps 32794 approved for 152 single-family detached lots with a minimum lot size of 7,200 sf and an average lot size of 8,831 sf.
- The Property is located within the most active submarket within West Riverside County, and north of the most active masterplan within the City of Menifee (Brookfield Residential's Audie Murphy Ranch).

QUICK FACTS

PROJECT SIZE	152 Lots
ENTITLEMENTS	TTM Approved
SITE CONDITION	Unimproved
OFFERS DUE	Submit Offer



[VIEW MAP](#)



[REQUEST MORE INFO](#)

EXCLUSIVELY LISTED BY:

Brian Carricaburu | bcarricaburu@landadvisors.com | Randy Coe | rcoe@landadvisors.com
Ian Sinderhoff | isinderhoff@landadvisors.com | Andrew Sinderhoff | asinderhoff@landadvisors.com

100 Spectrum Center Drive, Suite 1400, Irvine, California 92618 | 949.852.8288 | www.landadvisors.com

The information contained herein is from sources deemed reliable. We have no reason to doubt its accuracy but do not guarantee it. It is the responsibility of the person reviewing this information to independently verify it. This flyer is subject to change, prior sale or complete withdrawal. CalBRE#01225173

